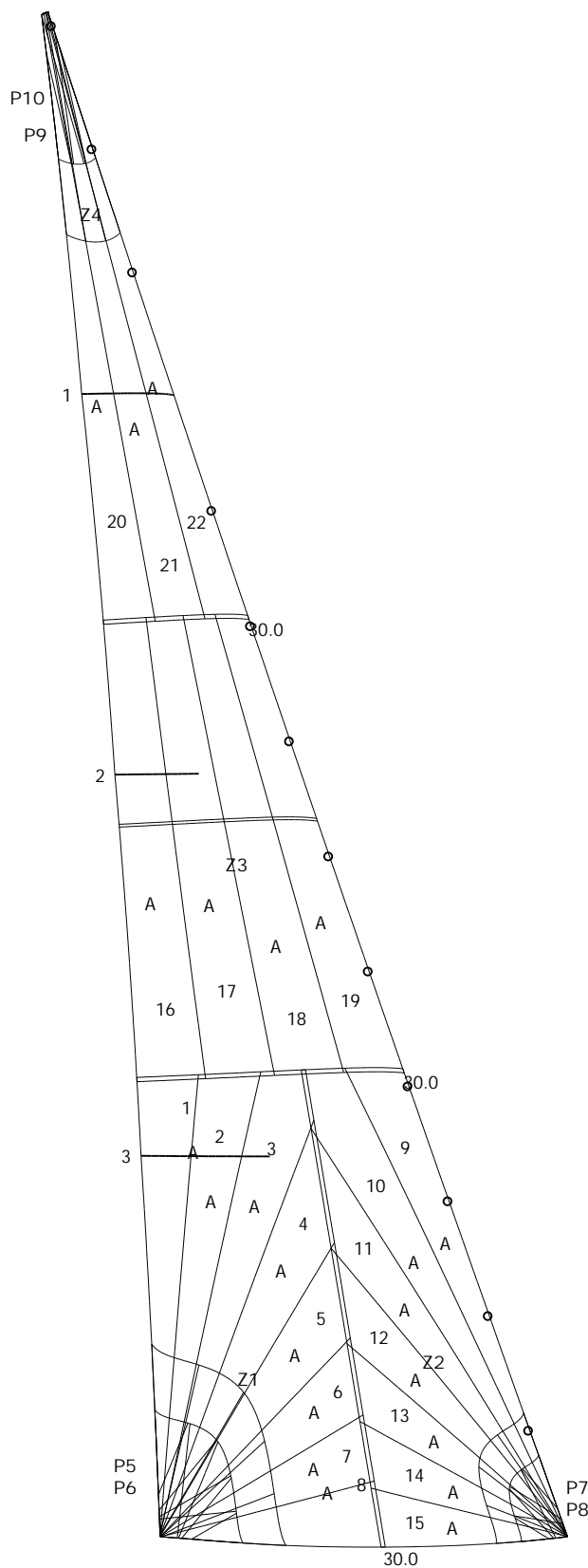
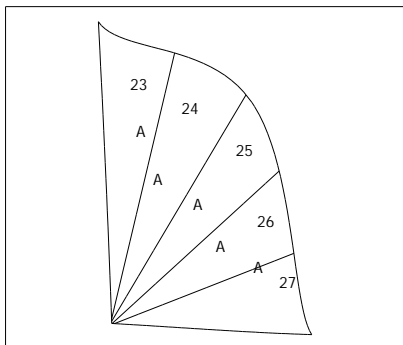


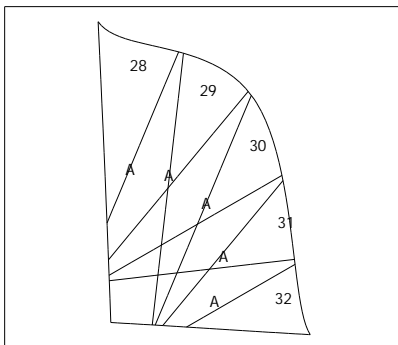
Panel layout



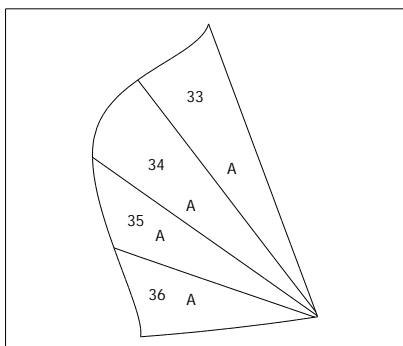
Patch layout



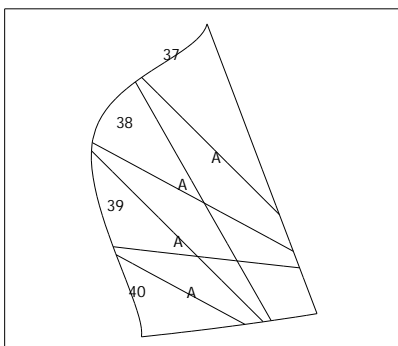
P5



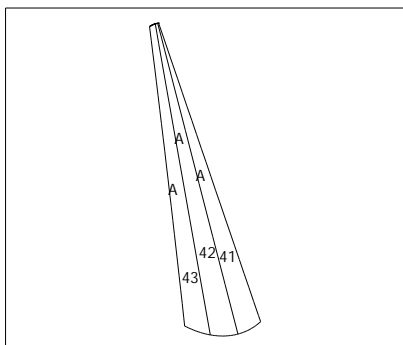
P6



P7



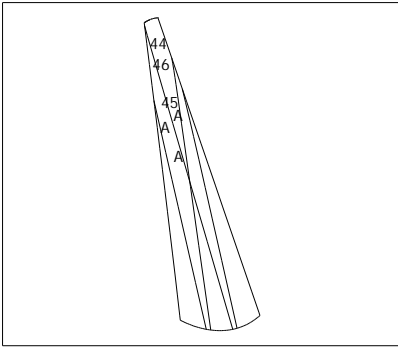
P8



P9

Date: 29/03/2016
Designer: Yann
Company:
Filename: 3311a.pak

Sail: Tr
Boat: Dufour 34e
Customer: SailOnet / Bouvier
Order Ref.:



P10

Measurement Check List

Measurement rules Ref.: Genois v06

[Luff] = 11.401 m [Leech1] = 10.829 m [Foot1] = 2.925 m [LP] = 2.793 m [Head] = 0.052 m Area = 15.747 m² [HHW] = 1.334 m [HTW] = 0.660 m [HUW] = 0.354 m Foot Offset Max = 0.21 m HSA = 15.64 m² Area OSR = 15.88 m² [Head 3D angle] = 14.6 ° [Tack 3D angle] = 71.2 ° [Clew 3D angle] = 94.2 °

Angles Clew: 96.19 ° Tack: 76.96 ° Head: 12.61 °

Roach (After broadseaming)

	1/8	2/8	3/8	4/8	5/8	6/8	7/8
Luff	-24.4 mm	-41.5 mm	-52.2 mm	-56.7 mm	-54.7 mm	-45.6 mm	-26.1 mm
Leech	-62.1 mm	-108.2 mm	-133.1 mm	-138.8 mm	-127.5 mm	-99.7 mm	-55.5 mm

Reef, Battens, Shape stripes

	Luff (m) (ref: tack)	Leech (m) (ref: clew)	Length (m)	Width (m)
Batten	8.547	8.115	0.698	0.025
Batten	5.695	5.410	0.600	0.025
Batten	2.829	2.705	0.930	0.025
Shape Stripe	5.376	5.047	1.490	0.020

Area & Weight

Sail area (mould): 15.75 m² Material area: 19.86 m² Material weight: 7827 g

Materials

Material's ID	Material's ref. (&color)	Area (m ²)	Weight (g)	Panels
A	DCX-M (Blanc - White)	19.864	7827	1-46

Seam width

Seam width (mm)	Zones; Total length (m)
30.0	Zone-seams: 1; 2; 3; TOTAL: 6.5m
15.0	Zones: Z1; Z2; Z3; Z4; TOTAL: 51.4m

Sail outline finishings

Hemmings: None

Outline drawings: None

Notes