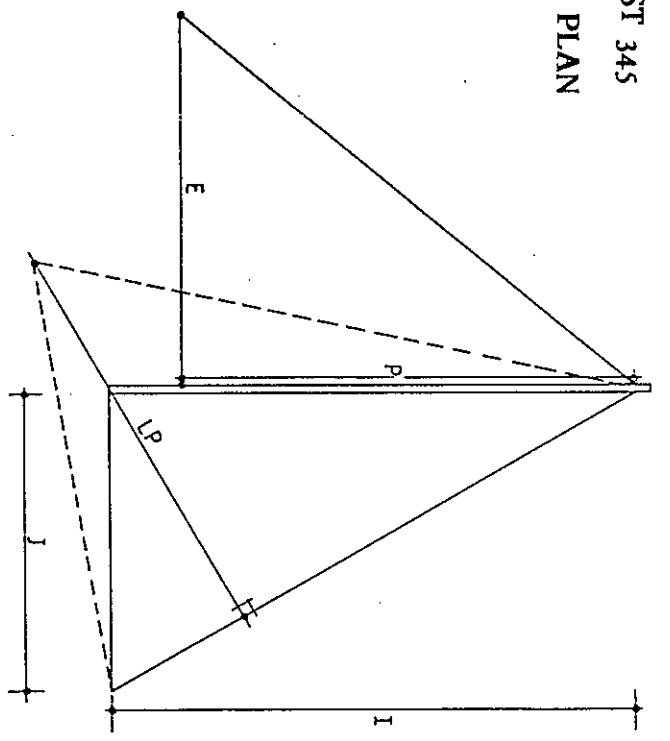
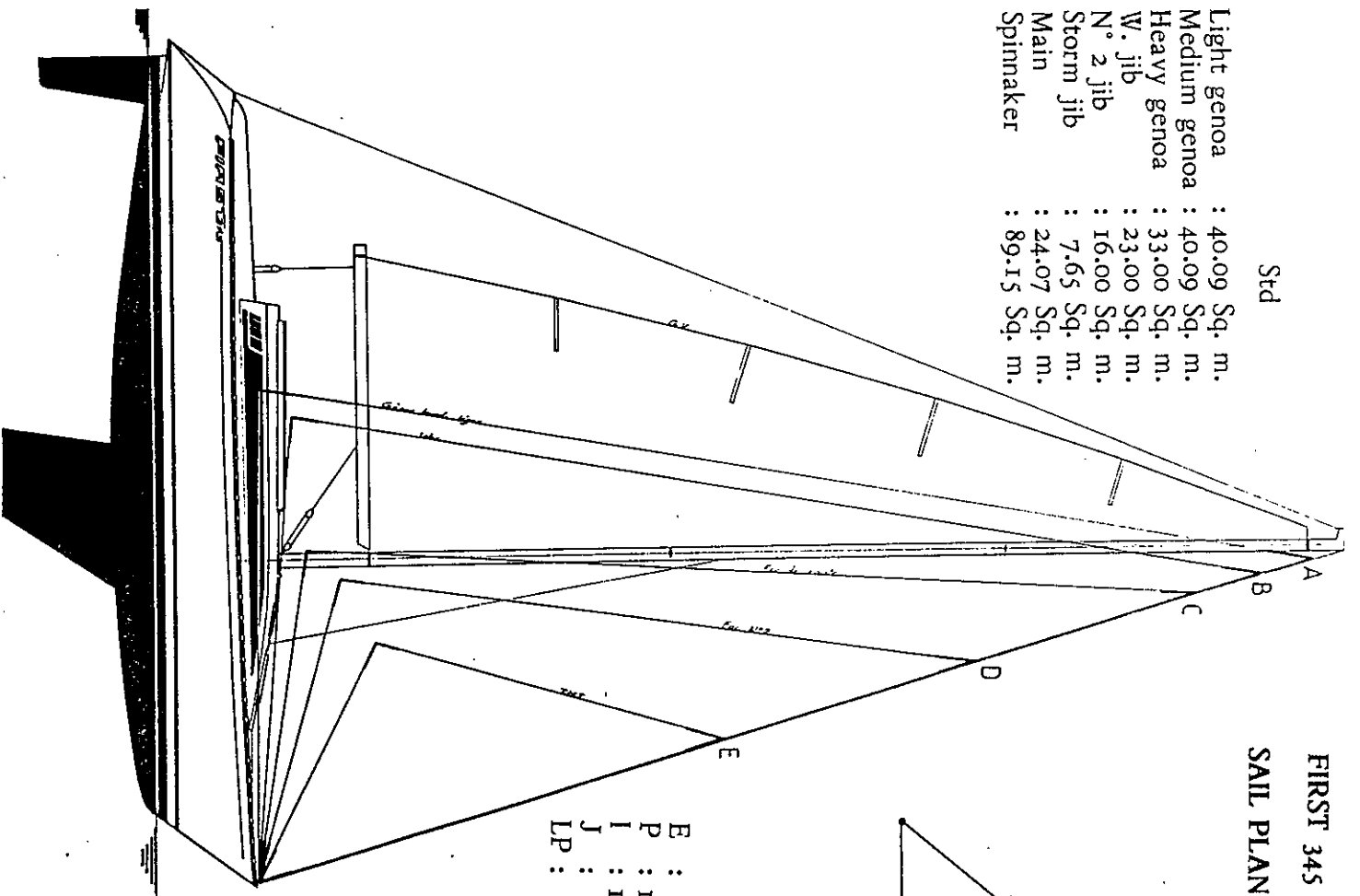


FIRST 345
SAIL PLAN

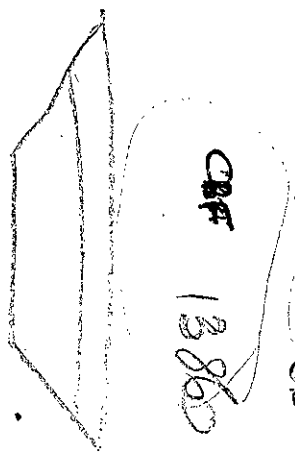
	Std
A Light genoa	: 40.09 Sq. m.
B Medium genoa	: 40.09 Sq. m.
C Heavy genoa	: 33.00 Sq. m.
D W. jib	: 23.00 Sq. m.
E N° 2 jib	: 16.00 Sq. m.
Storm jib	: 7.65 Sq. m.
Main	: 24.07 Sq. m.
Spinnaker	: 89.15 Sq. m.



	Std	"Su"
E	: 3 700	3 850
P	: 11 500	11 800
I	: 13 400	13 700
J	: 3 930	3 930
LP	: 5 900	5 900

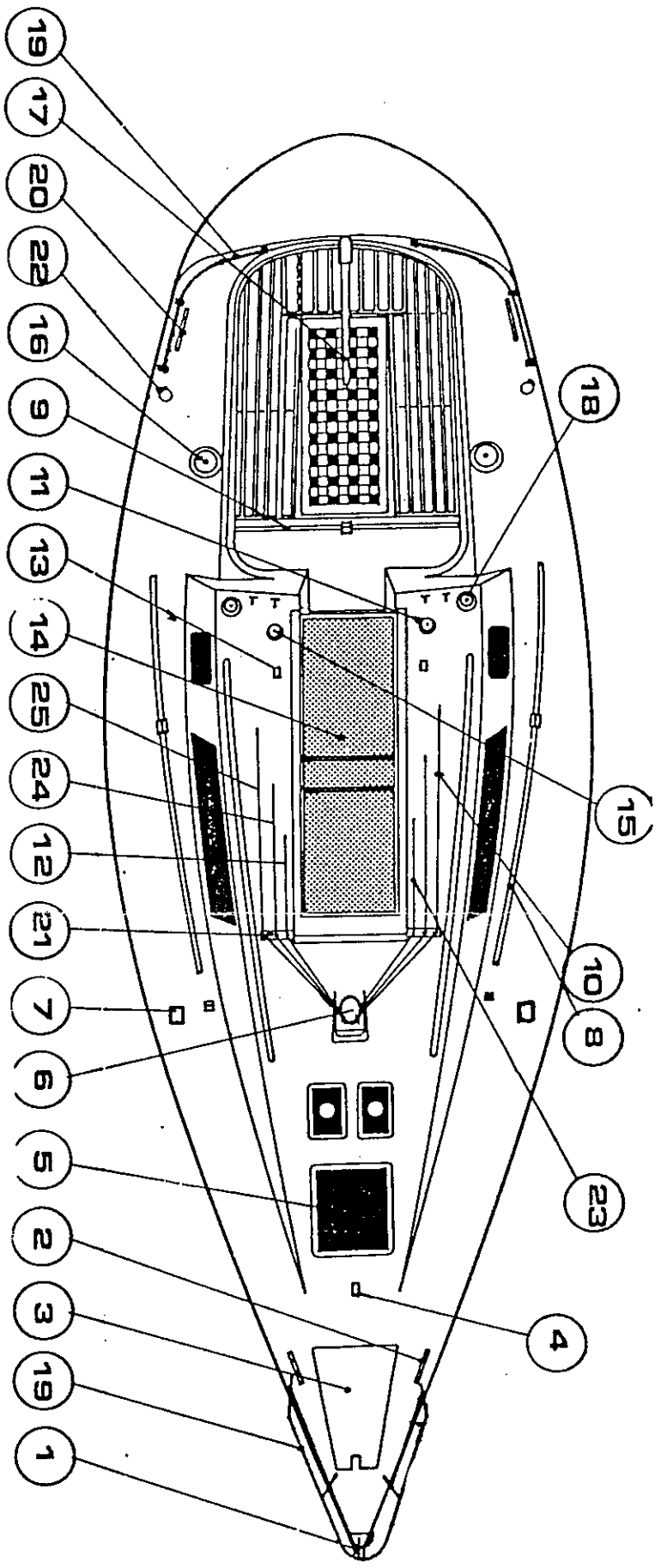
Forestay : Iso
Ø 8
Length between pins : 1 396 cm

1396 cm
US.



1396 cm
3455
1319

DECK LAYOUT



- 01 - Bow fitting
- 02 - Mooring cleat
- 03 - Chain locker
- 04 - Boom downhaul pad eye
- 05 - Deck opening hatch
- 06 - Mast
- 07 - Chainplate
- 08 - Genoa track
- 09 - Main traveller car
- 10 - Spinnaker topp. lift (opt.)
- 11 - Genoa halyard - port spinn. halyard (opt.)
- 12 - Main halyard
- 13 - Double deck stopper

- 14 - Double sliding hatch
- 15 - Manoeuvring winch
- 16 - Genoa sheet winch
- 17 - Tiller
- 18 - Spinnaker sheet winch (opt.) and cleats
- 19 - Bow and stern pulpits
- 20 - Mooring cleats
- 21 - Horizontal deck turning blocks
- 22 - Genoa sheet turning block
- 23 - Spinnaker halyard (opt.)
- 24 - Spinnaker topp. lift (opt.)
- 25 - Spinnaker downhaul (opt.)

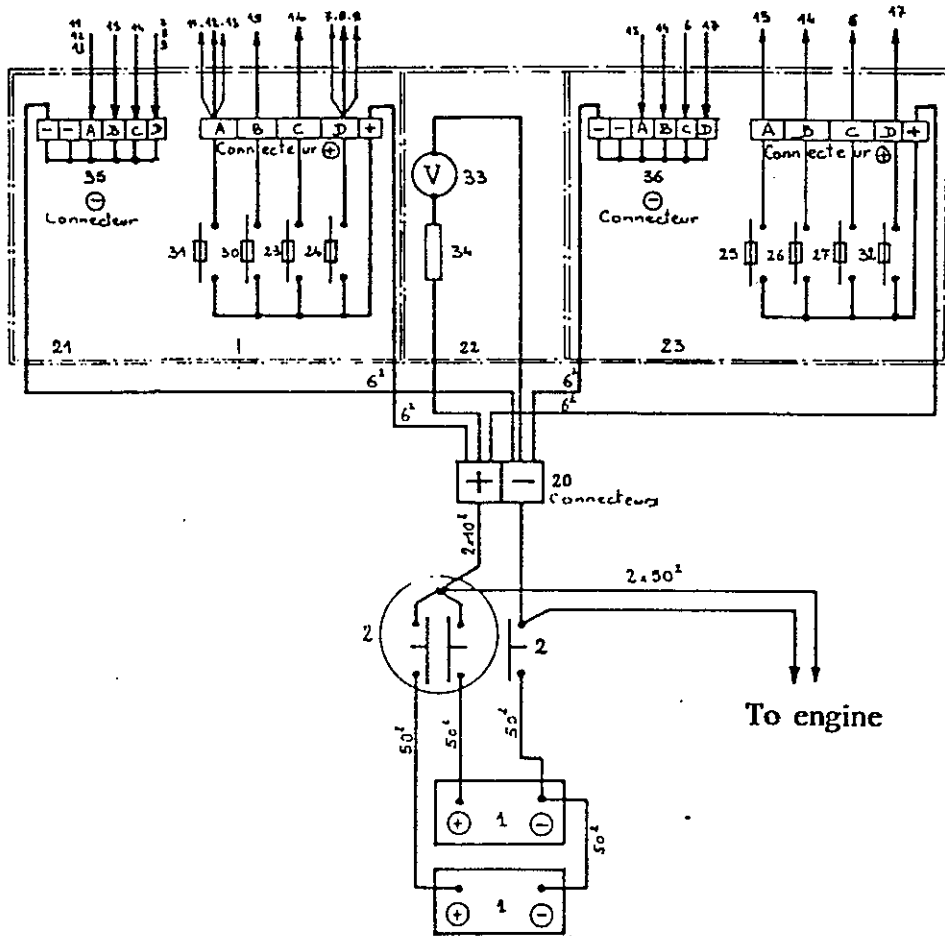
FIRST 345

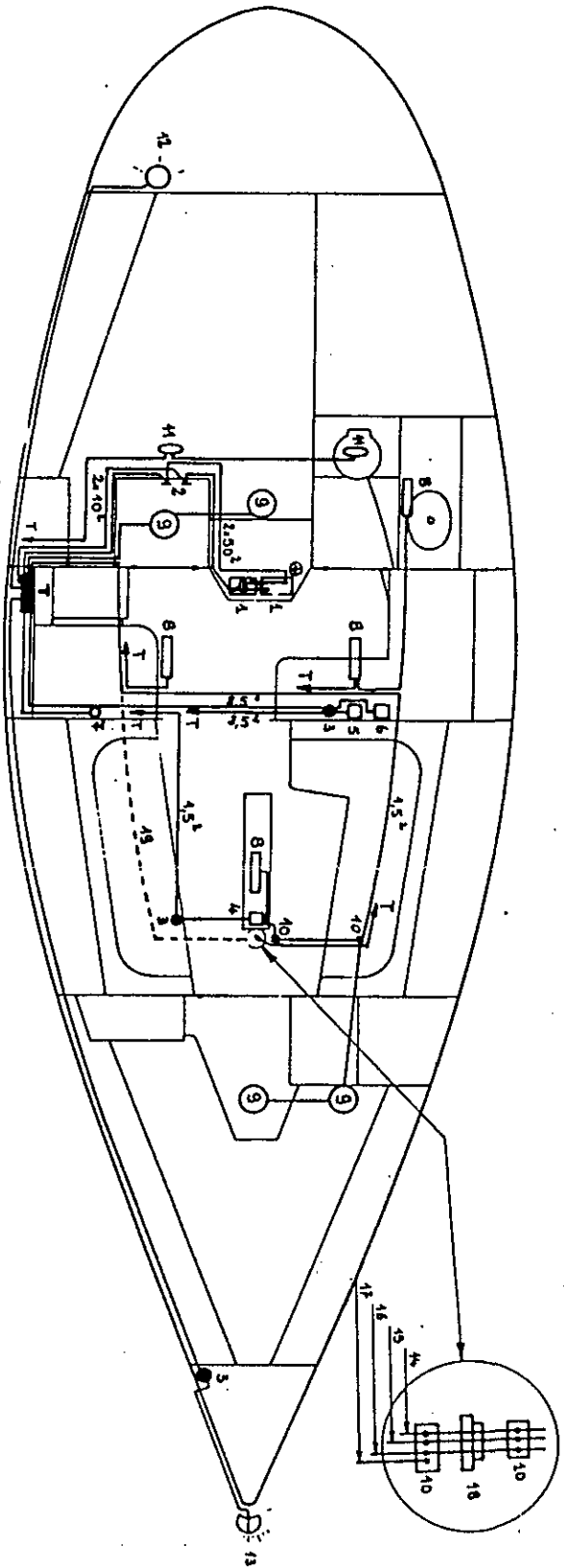
ELECTRIC INSTALLATION

- 01 - 12 V 60 Amp. battery in ventilated locker
- 02 - Battery switch and coupler
- 03 - Connexion stick in derivation box
- 04 - Electric bilge pump
- 05 - Fresh water system pump
- 06 - Refrigerating unit for icebox
- 07 - Chart reading lamp
- 08 - Fluorescent cabin light 8 W
- 09 - Round cabin light 10 W
- 10 - Connexion sticks
- 11 - Bulkhead compass lighting
- 12 - Stern light - 10 W
- 13 - Red/green bow light 25 W
- 14 - Red mooring light wire (0.75²)
- 15 - Purple steaming light wire (0.75)
- 16 - Black mast light return wire (2.50²)
- 17 - Purple deck light (option) wire (1.50²)
- 18 - Wire through deck fitting
- 19 - Option messenger tube
- 20 - + and - of electric panel
- 21 - Electric panel : lighting module
- 22 - " " : Voltmeter "
- 23 - " " : Options "
- 24 - Inside lighting switch (with fuse and control light)
- 25 - Water system switch " " " "
- 26 - Bilge pump switch " " " "
- 27 - Refrigeration system switch (with fuse and control light) 15 A (option)
- 29 - Mooring light switch (with fuse and control light) 5 A
- 30 - Steaming light switch " " " " 5 A
- 31 - Running light and compass light switch (with fuse and control light) 10 A
- 32 - Deck light switch (with fuse and control light) 10 A (option)
- 33 - voltmeter
- 34 - 5 A fuse
- 35 - Electric panel return connexion stick (see 21)
- 36 - Electric panel return connexion stick (see 23)

Conductors and accessories approved by R.I.N.A., section D, chapter IV

ELECTRIC PANEL





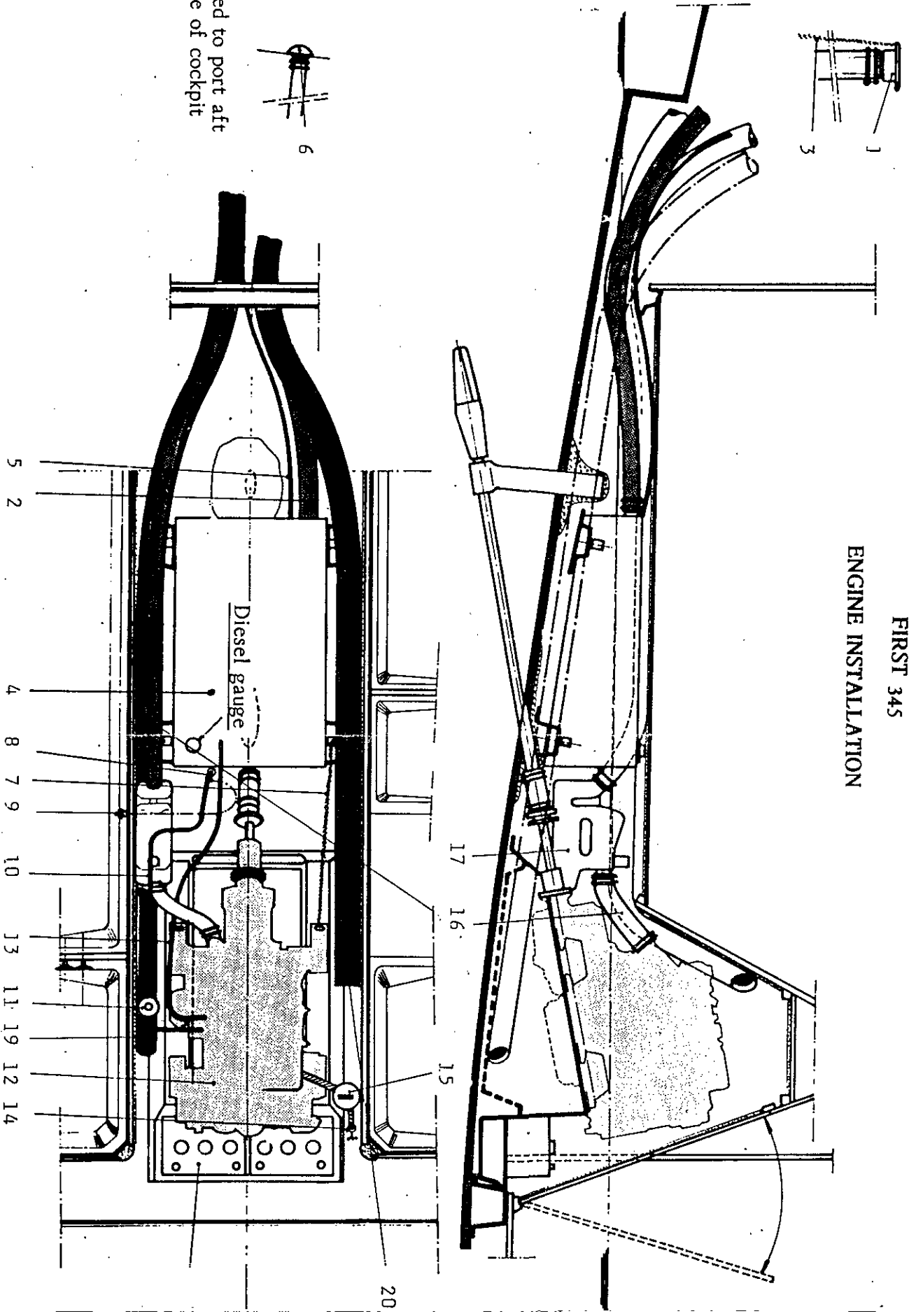
ELECTRIC INSTALLATION

FIRST 345

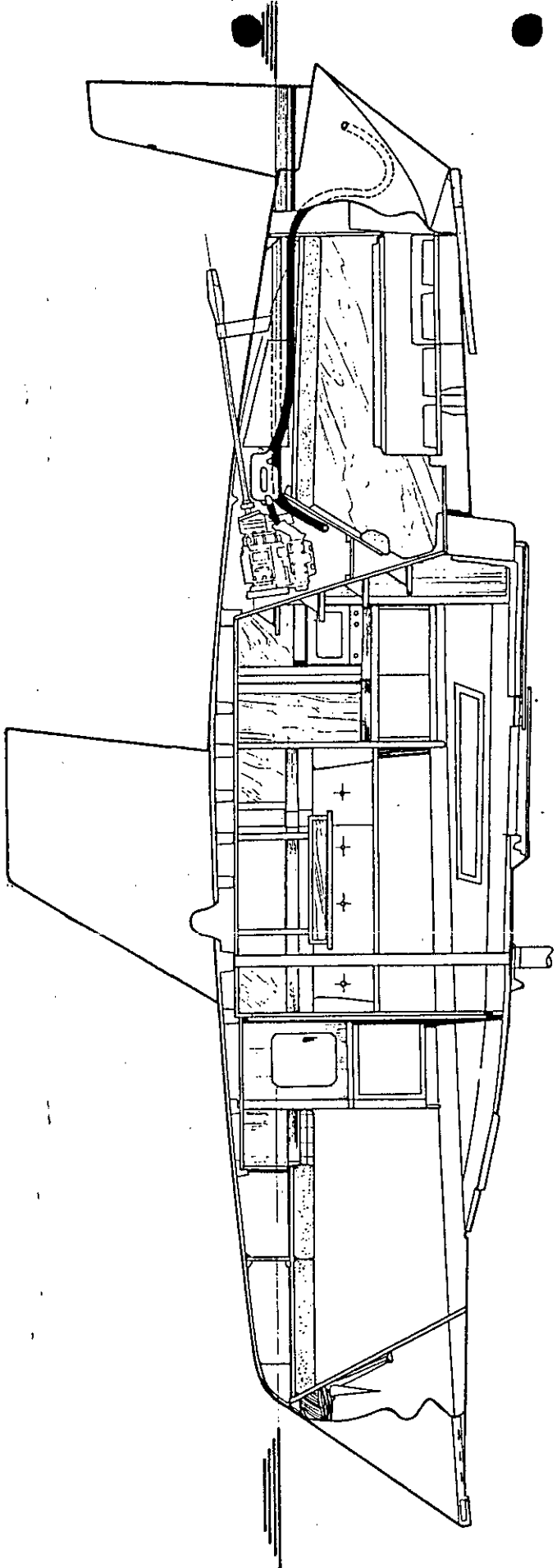
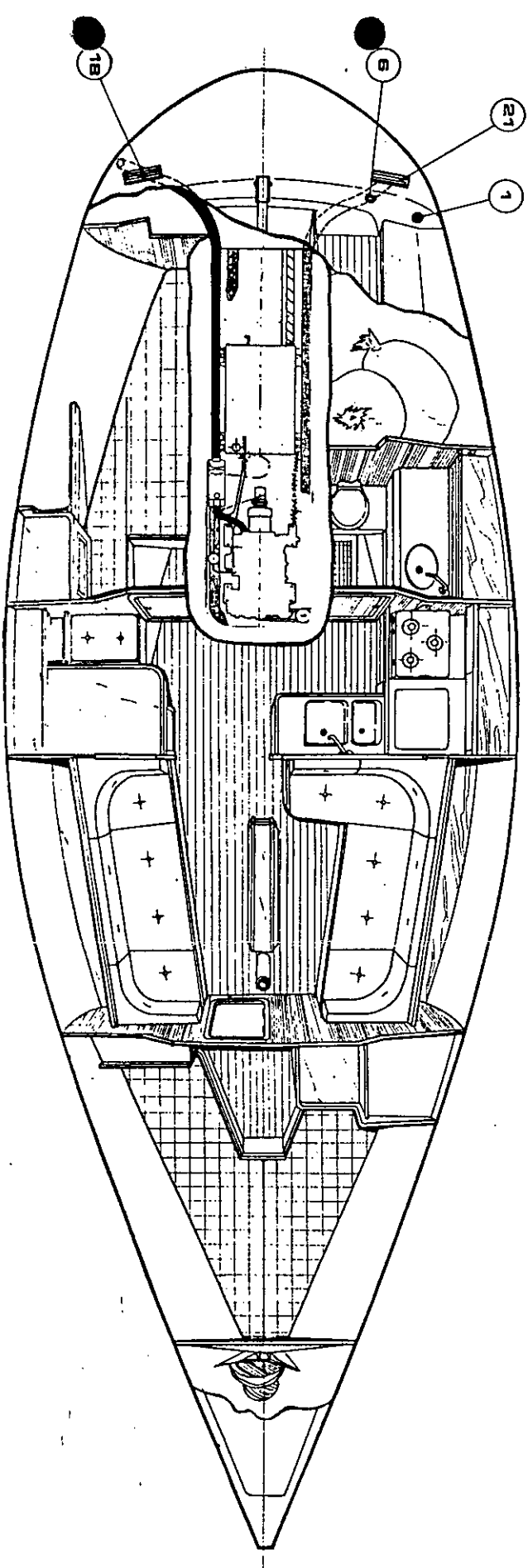
FIRST 345
ENGINE INSTALLATION

- 22 - Battery
- 21 - Fouled air extraction (\varnothing 70 mm)
- 20 - Fouled air extraction hose (\varnothing 70 mm)
- 19 - Fresh air intake hose (\varnothing 70 mm)
- 18 - Fresh air intake (to starboard on transom)
- 17 - "Vetus" LP 45 type exhaust manifold
- 16 - Exhaust collector (\varnothing 50 mm - GITERDEC type)
- 15 - Filter on cooling system
- 14 - Water intake with filter and seacock
- 13 - Diesel oil return pipe (\varnothing 6 and 8 mm)
- 12 - Engine
- 11 - Filter
- 10 - Diesel oil intake (\varnothing 6 and 8 mm)
- 09 - Remote diesel intake shut off switch
- 08 - Diesel intake shut off
- 07 - Grounding
- 06 - Diesel tank vent
- 05 - Diesel tank ventilation hose (\varnothing 14 and 16 mm)
- 04 - 75 L S/S diesel tank (1.5 mm plates)
- 03 - Tank grounding
- 02 - Diesel tank filling hose (\varnothing internal 50 mm)
- 01 - Diesel tank fill deck fitting

FIRST 345
ENGINE INSTALLATION



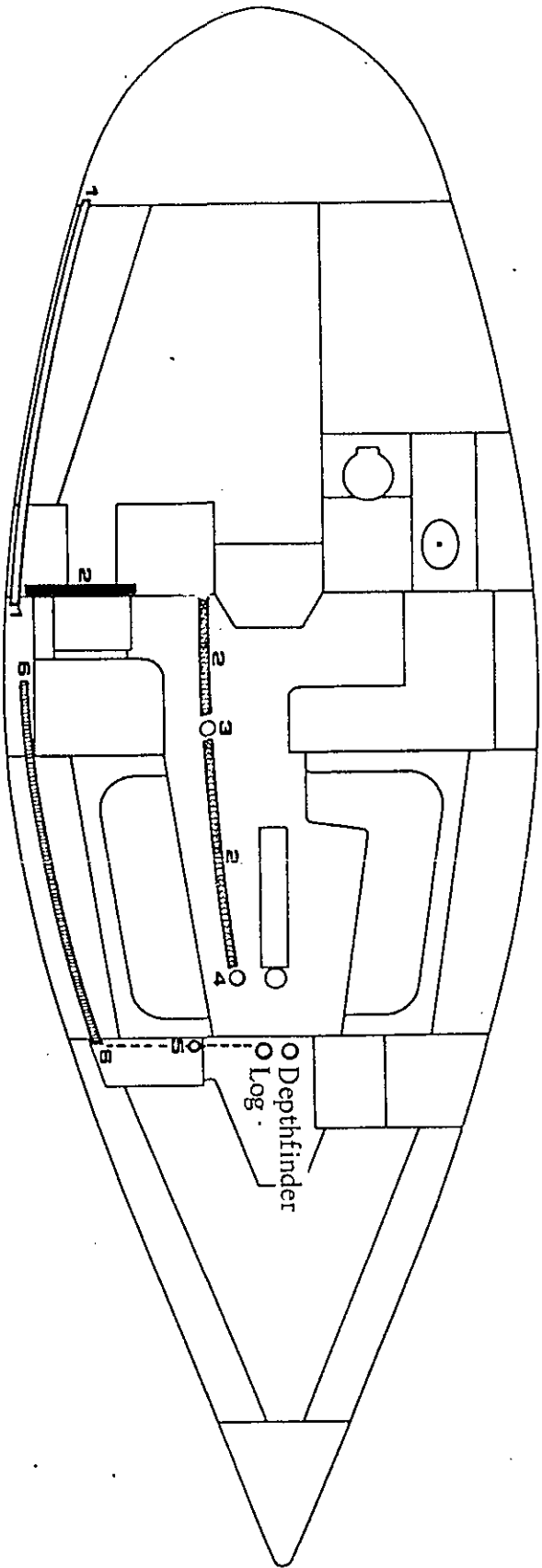
Ce schéma n'a qu'un caractère indicatif, le chantier se réservant le droit d'améliorer et de modifier ses montages



ENGINE INSTALLATION

FIRST 345

MESSENGER CONDUITS FOR OPTIONS
LOG - DEPTHFINDER

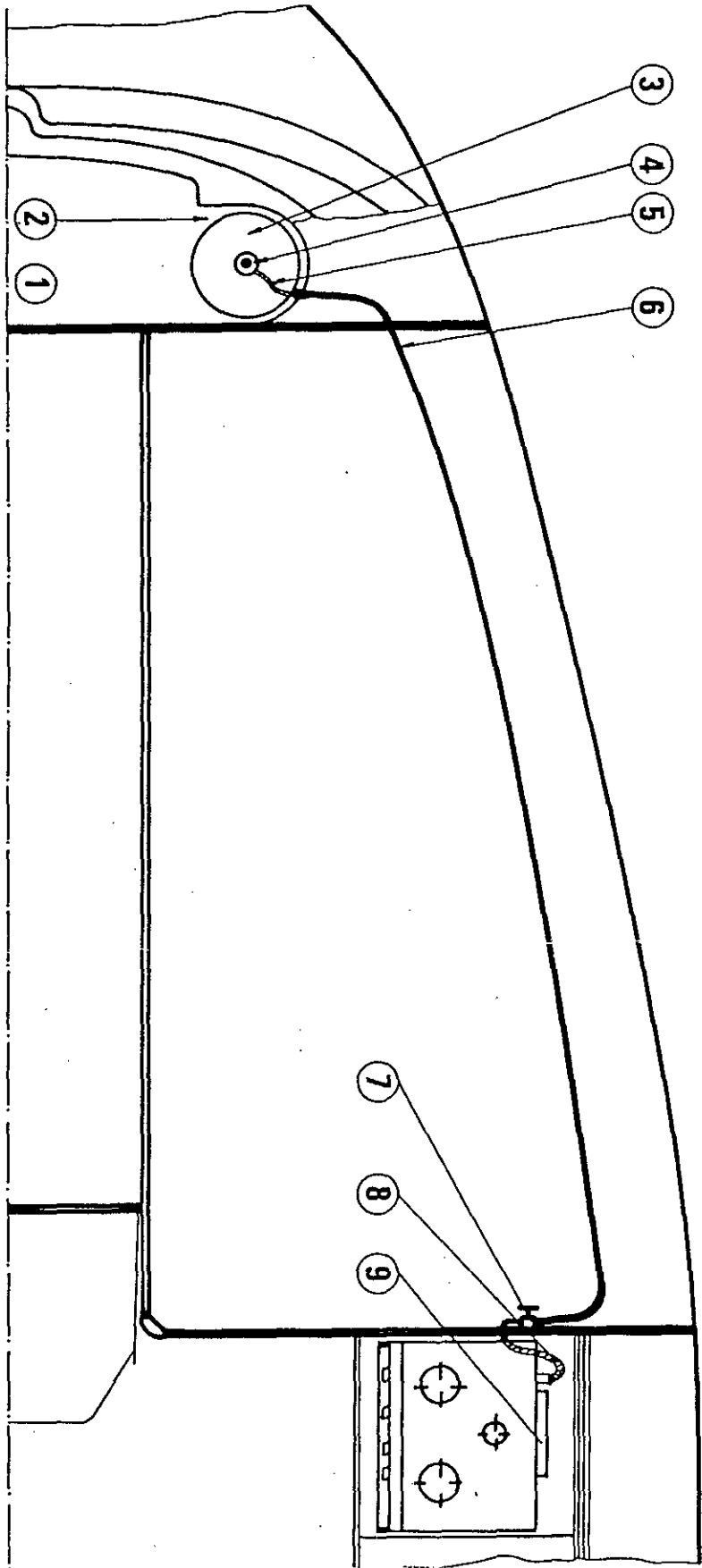


- Wooden angle slat, under deck
- Rigid conduit on hull
- Rigid conduit under deck
- Semi rigid hose on hull

- 6 - Wires for log and depthfinder
- 5 - Plug under locker to run log and depthfinder wires
- 4 - Plug under locker to run mast options wires
- 3 - Plug under locker to run mast options and console repeaters wires
- 2 - Wires for repeaters and mast options
- 1 - Wires for automatic pilot

FIRST 345

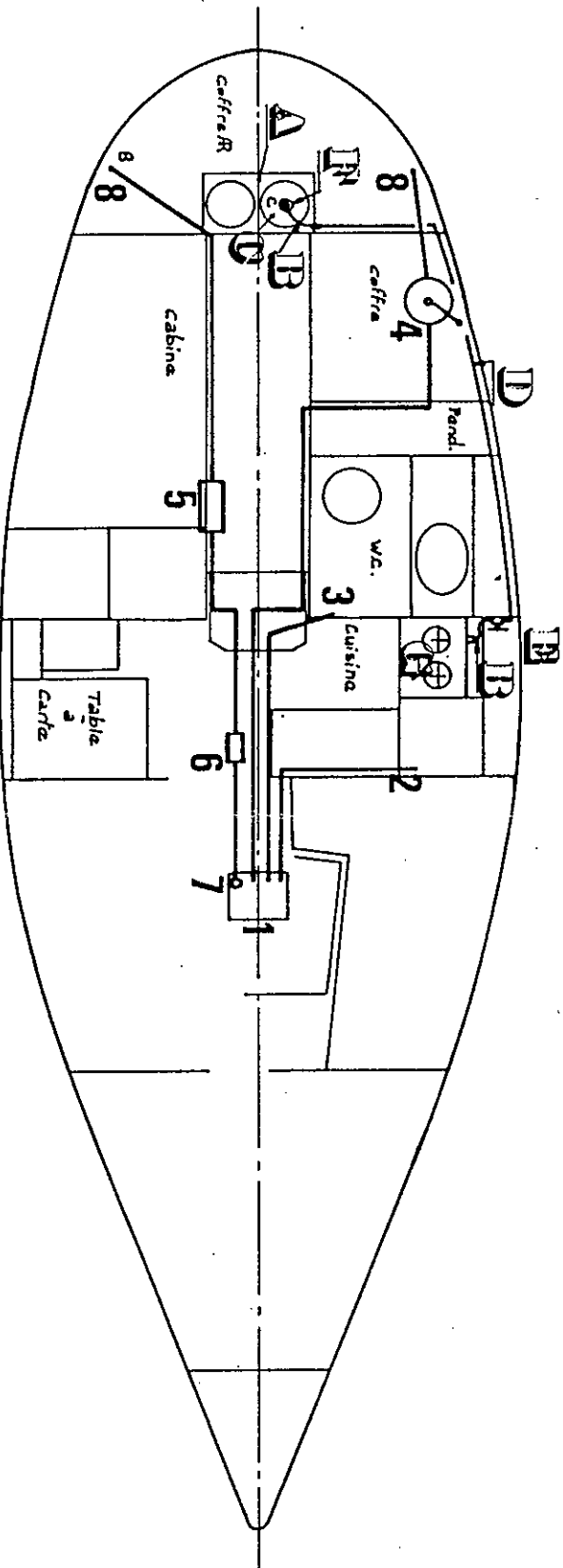
GAS SYSTEM



- 9 - Stove with oven
- 8 - Flexible hose (less than 1 m) CEE approved
- 7 - Shut off
- 6 - Copper pipe
- 5 - Flexible hose (less than 1 m) CEE approved
- 4 - Bottle shut off
- 3 - Gas bottle
- 2 - Gas bottle locker
- 1 - Liferaft locker

FIRST 345

GAS SYSTEM AND WATER DRAINING CIRCUIT



Water draining circuit

- 1 - Sump
- 2 - Icebox draining
- 3 - Shower draining
- 4 - Manual bilge pump
- 5 - Electric bilge pump
- 6 - Filter
- 7 - Intake filter
- 8 - Through hull fittings

Gas system

- A - Gas bottle locker
- B - Flexible hose
- C - Gas bottle (butane)
- D - Rigid pipe
- E - Shut off
- F - Butane bottle shut off
- G - Stove with oven