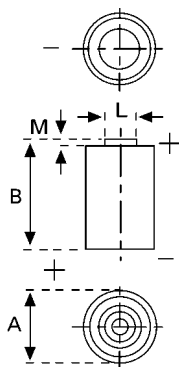


**Data Sheet**


**Type Number** ..... 6215  
**Designation IEC** ..... CR 17345  
**System** ..... Li-Manganese dioxide / Organic Electrolyte

**UL Recognition**..... MH13654.(N)  
**Nominal Voltage** ..... 3 V  
**Typical Capacity C** ..... 1500 mAh  
 Load 200 Ohm, at 20°C down to 2 V

**Weight (approx.)** ..... 17 g  
**Volume** ..... 7 ccm  
**Coding**..... Date of Manufacturing Quarter / Year

**Temperature Ranges**

	min	max.
Storage .....	-20°C	45 °C
Discharge .....	-40°C	70 °C*

**Dimensions**

	min	max.
Diameter (A) .....	16,0	17,0
Height (B) .....	32,4	33,9
Shoulder Diameter[L].....	6,1	
Shoulder Height [M].....	1,0	

**Typical Capacities (at 20°C)**

Discharge Type	Load	End Voltage:	2.0 V
Continuous 24h/d,7d/w	200 Ω	Time:	108 h
		Capacity [mAh]:	1500
		Energy [mWh]:	4190

\* Contact VARTA if the application is intended to be outside the range of -20°C to +60°C.

*Information and contents in this data sheet are for reference purpose only.  
 They do not constitute any warranty or representation and are subject to change without notice.  
 For most current information and further details, please contact your VARTA representative.*

**VARTA Microbattery GmbH, Daimlerstr. 1, D-73479 Ellwangen/Jagst**

Subject to change without prior notice!

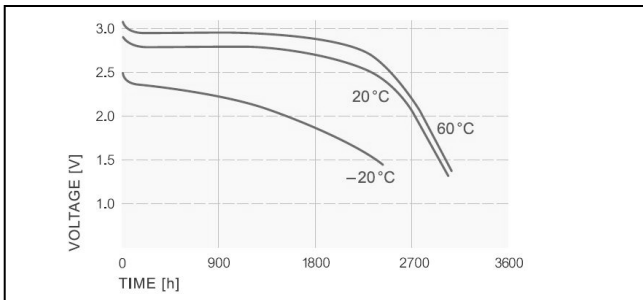
Tel.: (+49) 7961/921-0, Telefax: (+49) 7961/921-553

Date of issue: 2014-09-16

**Data Sheet**

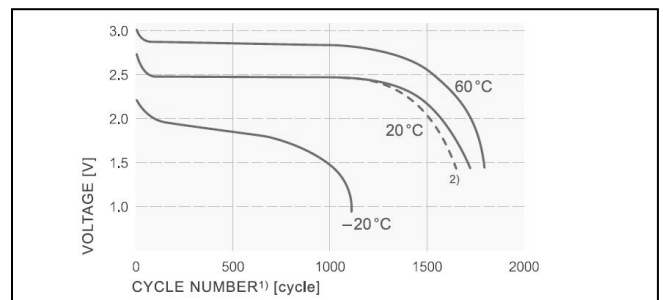
**Performance Data:**

• **Temperature Characteristics\***



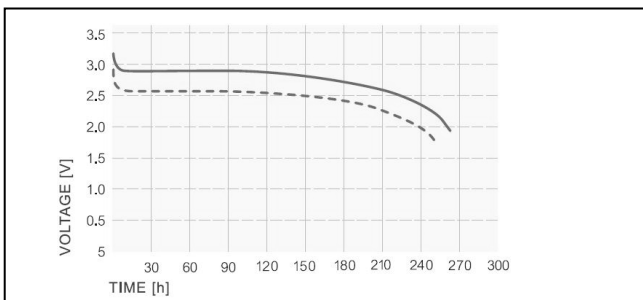
\*Discharge Load 5.6 kΩ

• **Pulse discharge characteristics\***



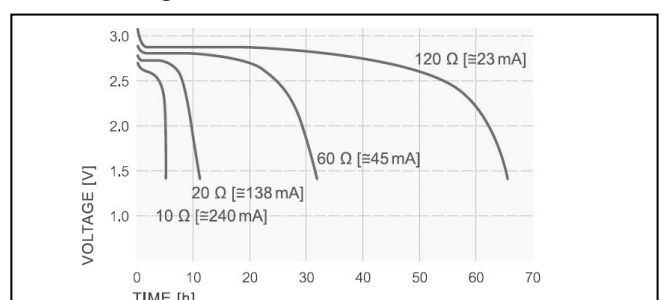
\* 1) Load: 0.9A, 3 sec on, 27 sec. off    2) after storage at 60°C/100 days

• **Typical discharge curve\***



\* Load: cont. 560 Ω, Pulse load: 2.sec/min 3Ω (parallel)

• **Discharge Characteristics\***



\* at room temperature 21°C

- Self-discharge rate < 1% at room temperature
- Storage life > 10 years
- Operating life\* > 10 years

\* depending on environmental condition and energy consumption

*Information and contents in this data sheet are for reference purpose only.  
They do not constitute any warranty or representation and are subject to change without notice.  
For most current information and further details, please contact your VARTA representative.*