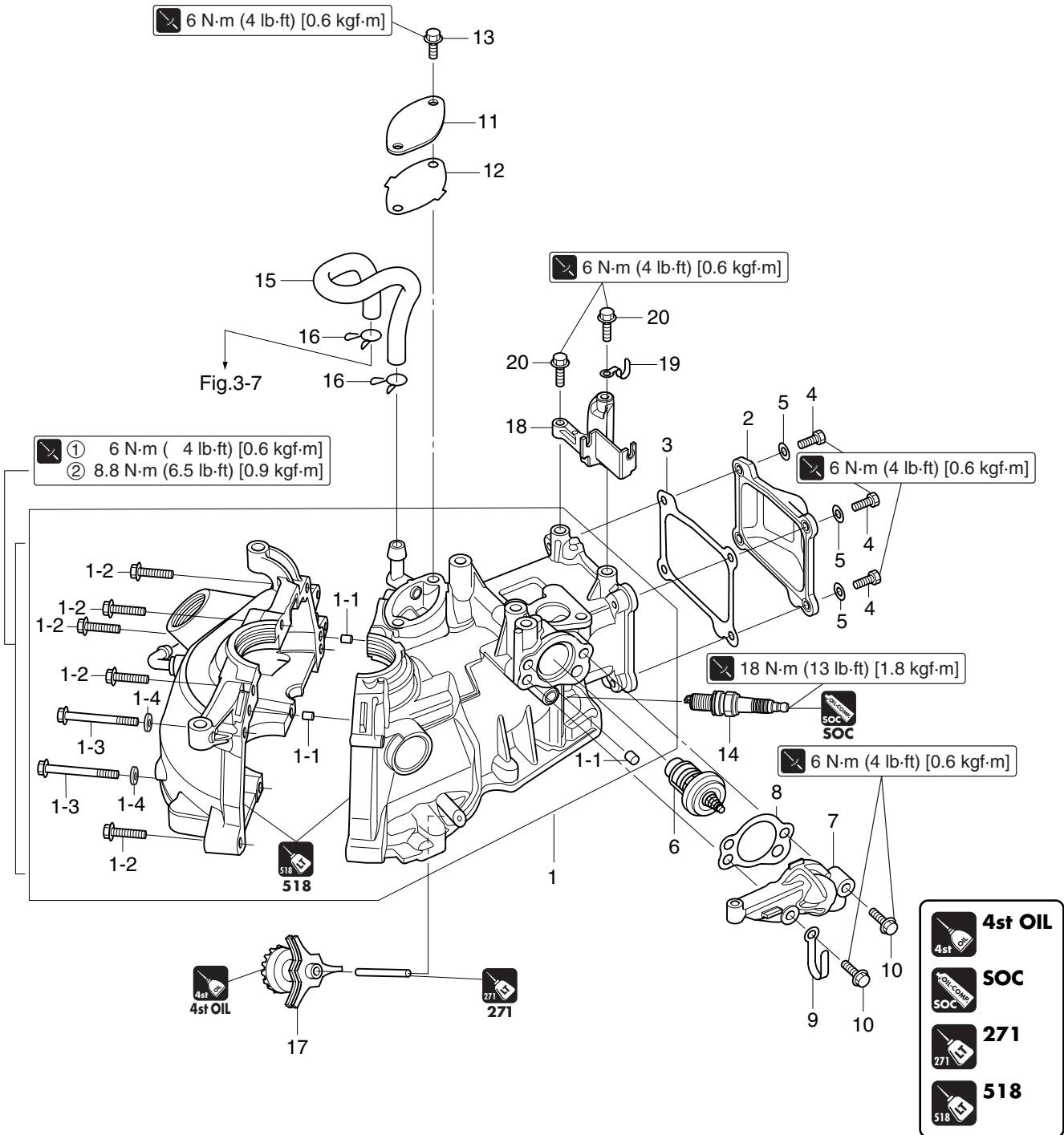




# Power Unit

## Cylinder

P/L Fig. 1



Ref. No.	Part Name	Q'ty	Remarks
1	Cylinder-Crankcase	1	with Nipple
1-1	Dowel Pin, 6-12	3	
1-2	Bolt	6	M6 L=35mm
1-3	Bolt	2	M6 L=75mm
1-4	Washer	2	
2	Cylinder Head Cover	1	
3	Cylinder Head Cover Gasket	1	<b>Do not reuse.</b>
4	Bolt	4	M6 L=16mm
5	Washer, 6-16-1.5	4	
6	Thermostat	1	52°C Mark 5B or 52B
7	Thermostat Cap	1	
8	Thermostat Cap Gasket	1	<b>Do not reuse.</b>

Ref. No.	Part Name	Q'ty	Remarks
9	Clamp, 6.5-67P	1	
10	Bolt	2	M6 L=30mm
11	Breather Chamber Cover	1	
12	Breather Chamber Cover Gasket	1	<b>Do not reuse.</b>
13	Bolt	2	M6 L=16mm
14	Spark Plug M12-P1.25	1	DCPR6E [NGK]
15	Breather Hose	1	
16	Clip, ø12	2	
17	Slinger	1	
18	Throttle Cable Bracket	1	
19	Clamp, 6.5-67P	1	
20	Bolt	2	M6 L=25mm