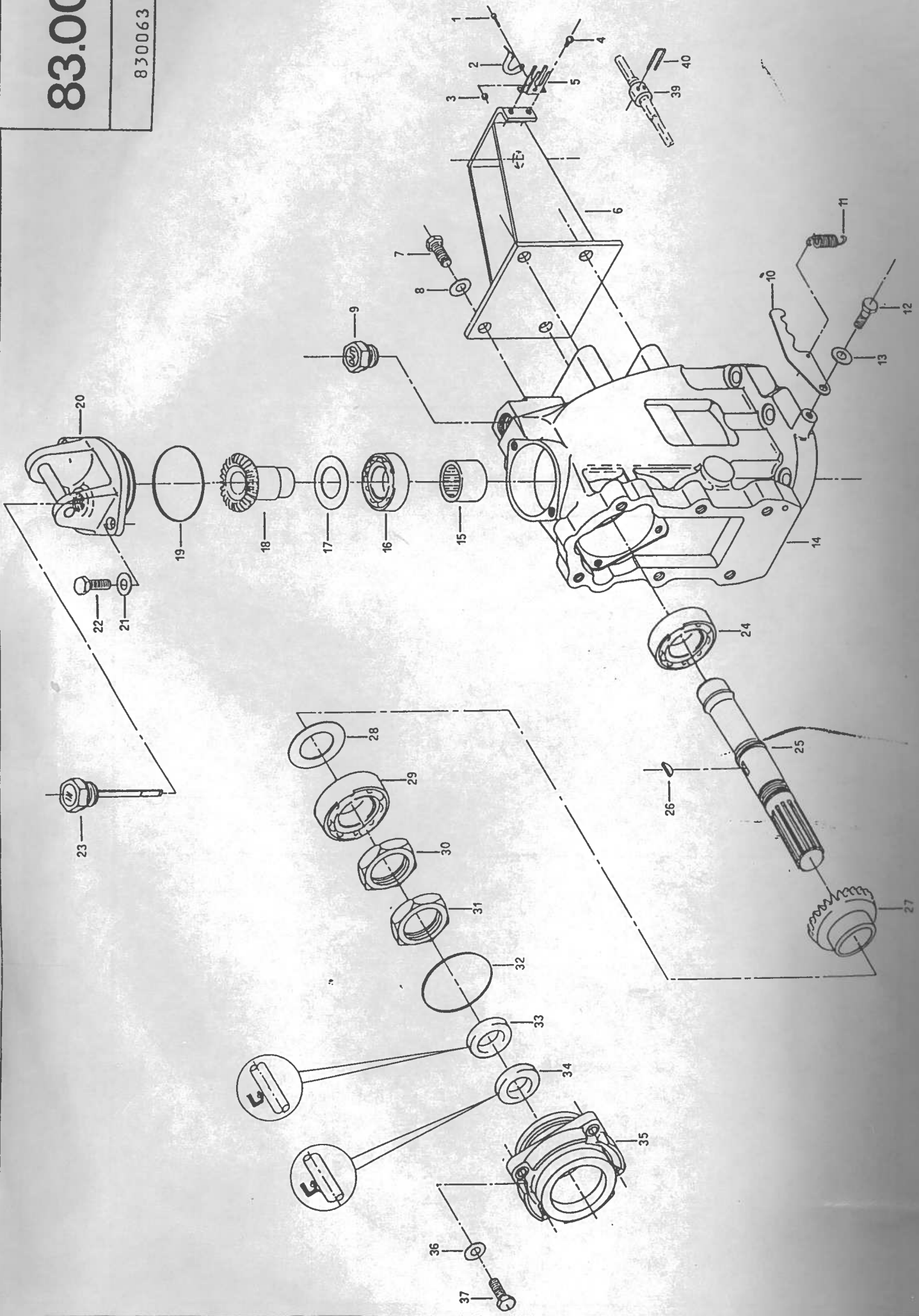


83.00

830063



ITEM	PART N°	Qty	DESCRIPTION	REMARKS	ITEM	PART N°	Qty	DESCRIPTION	REMARKS
1	310042	1	BRACKET		27	310071	1	GEAR	
2	-	1	-	1-2-3-5 ITEM 1	28	310064	1	GEAR SHIM	
3	-	1	-	ITEM 1	29	310063	1	BALL BEARING	
4	607403	2	SCREW		30	310072	1	SHAFT NUT	
5	-	1	-	ITEM 1	31	310072	1	SHAFT NUT	
6	310058	1	SILENTBLOCK SUPPORT		32	310066	1	O-RING	
7	119141	4	SCREW	HM8x20	33	310038	1	RING SEAL	
8	119139	4	WASHER	ø8	34	310039	1	RING SEAL	
9	310041	1	OIL PLUG		35	310073	1	COVER	
10	310043	1	GEAR SELECTOR		36	609602	4	WASHER	ø6
11	310044	1	SELECTOR SPRING		37	300275	4	SCREW	HM6x25
12	310059	1	SELECTOR PIN		38	*			
13	310060	1	SELECTOR WASHER		39	310148	1	STOP BUSHING	
14	310061	1	BODY		40	310149	1	FORK	
15	310062	1	ROLLER BEARING						
16	310063	1	BALL BEARING						
17	310064	1	CROWN SHIM						
18	310065	1	CROWN GEAR						
19	310066	1	O-RING						
20	310067	1	COVER						
21	119139	2	WASHER	ø8					
22	119141	2	SCREW	HM8x20					
23	310040	1	PLUG,LEVEL CONTROL						
24	310058	1	BALL BEARING						
25	310069	1	SHAFT						
26	310070	1	KEY,FEATHER						



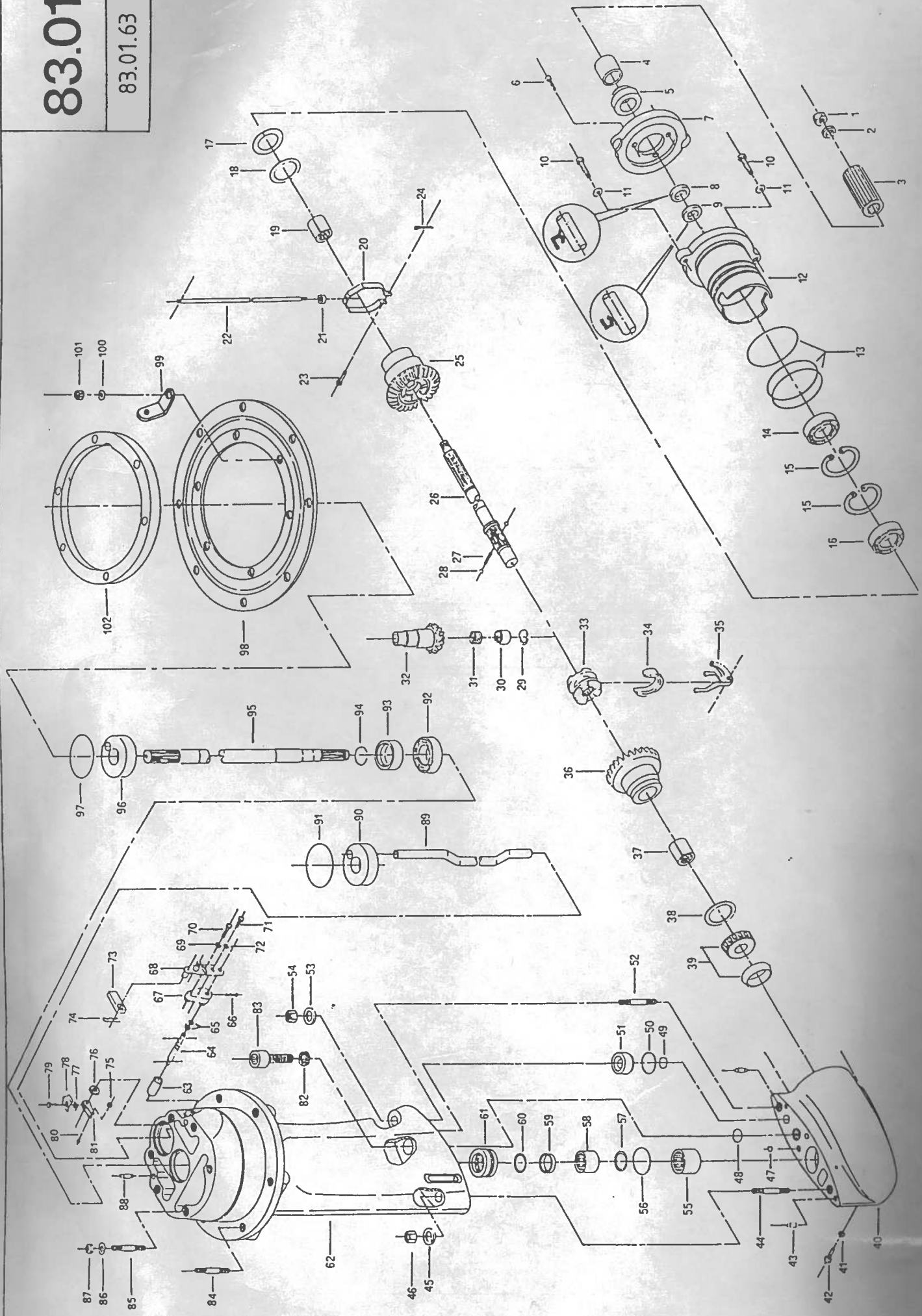
SAIL DRIVE 2.50-3.75  
24-06-95

GROUP DESCRIPTION : 83.00  
UPPER BODY

PAGE  
83.00,63

83.01


83.01.63





ITEM	PART N°	Qty	DESCRIPTION	REMARKS	ITEM	PART N°	Qty	DESCRIPTION	REMARKS
1	310048	1	NUT	M16/150	27	310087	1	SPRING	
2	310049	1	WASHER		28	310088	2	BALL	
3	310051	1	GEARING-DOWN		29	310089	1	CIR-CLIP J17	
4	310052	1	SPACER		30	310090	1	GEAR RETAINER METAL RING	
5	310053	1	PROPELLER SHOULDER		31	310091	1	GEAR RETAINER SPRING	
6	024005	3	SCREW		32	310092	1	GEAR	
7	310045	1	ZINC ANODE		33	310093	1	SLIDER	
7	310603	1	MAGNESIUM ANODE		34	310094	1	RING	
8	310046	1	RING SEAL		35	310095	1	EQUILIZER	
9	310047	1	RING SEAL		36	310096	1	FORWARD GEAR	
10	647316	2	SCREW	HMBx35	37	310097	1	FORWARD GEAR BUSHING	
11	119139	2	WASHER	Ø8	38	310098	1	SHIM	
12	310074	1	PLUG		39	310099	1	BEARING	
13	310050	3	O-RING		40	310100	1	GEAR-BOX	
14	310075	1	BEARING		41	310101	1	PIN GASKET	
15	310076	2	CIR-CLIP		42	310102	1	PIN	
16	310077	1	BEARING		43	310103	2	PIN	5x18
17	310078	1	SHIM		44	310104	1	STUD	
18	310079	1	SHOULDER RING		45	119136	1	WASHER GROWER	Ø10
19	310080	1	REVERSE GEAR BUSHING		46	574519	1	NUT	M10
20	310081	1	U-BOLT		47	310105	2	O-RING	
21	301116	1	NUT	M6	48	310106	1	O-RING	
22	310082	1	GEAR ROD		49	310107	1	O-RING	
23	310083	1	U-BOLT PIN		50	310108	1	O-RING	
24	310084	1	SPLIT PIN		51	310109	1	OR HOUSING OF OIL TUBE	
25	310085	1	REVERSE GEAR		52	310104	1	STUD	
26	310086	1	PROPELLER SHAFT						

SAIL DRIVE 2.50-3.75



GROUP DESCRIPTION : 83.01

23-06-99

SAIL DRIVE TAIL

ITEM	PART N°	Qty	DESCRIPTION	REMARKS	ITEM	PART N°	Qty	DESCRIPTION	REMARKS
53	119135	1	WASHER	∅10	79	300317	1	SCREW	HM5x16
54	574519	1	NUT	M10	80	310127	1	SCREW	HM4x20
55	310110	1	ROLLER BEARING		81	310128	1	FORK	
56	310111	1	O-RING		82	310129	1	WASHER	
57	310112	1	CIR-CLIP JV33		83	310130	1	SCREW	
58	310113	1	ROLLER BEARING		84	310131	1	STUD	
59	310114	1	GEAR SHOULDER		85	310132	1	STUD	
60	310115	1	SHIM		86	119135	1	WASHER	∅10
61	310116	1	STEP BEARING		87	574519	1	NUT	M10
62	310117	1	INTERMEDIARY BODY		88	310133	1	PIN	8x20
63	310118	1	BUSHING		89	310134	1	OIL TUBE	
64	310119	1	SHAFT		90	310135	1	RING ON OR HOUSING	
65	310120	1	O-RING		91	310136	1	O-RING	
66	39160109	1	SCREW	HM5x20	92	310137	1	BEARING	
67	310121	1	GEAR CONTROL		93	310138	1	RW HOUSING	
68	310056	1	LEVER		94	310139	1	CIR-CLIP RW18	
69	027324	1	WASHER		95	310140	2	VERTICAL SHAFT	
70	639903	1	SCREW	HM8x16	96	310141	1	RING ON OR HOUSING	
71	304025	1	SCREW	HM6x16	97	310142	1	O-RING	
72	304026	1	WASHER		98	310037	1	RUBBER MEMBRANE	
73	310055	1	CABLE HEAD		99	310143	1	SPRING HALTER	
74	310122	1	PIN		100	037024	6	WASHER	∅8
75	310123	1	NUT		101	494520	6	NUT	M8
76	310124	1	SPACER		102	310144	1	FLANGE	
77	310125	1	SCREW						
78	310126	1	RETAINER SCREW						



GROUP DESCRIPTION : 83.01

PAGE

SAIL DRIVE 2.50-3.75

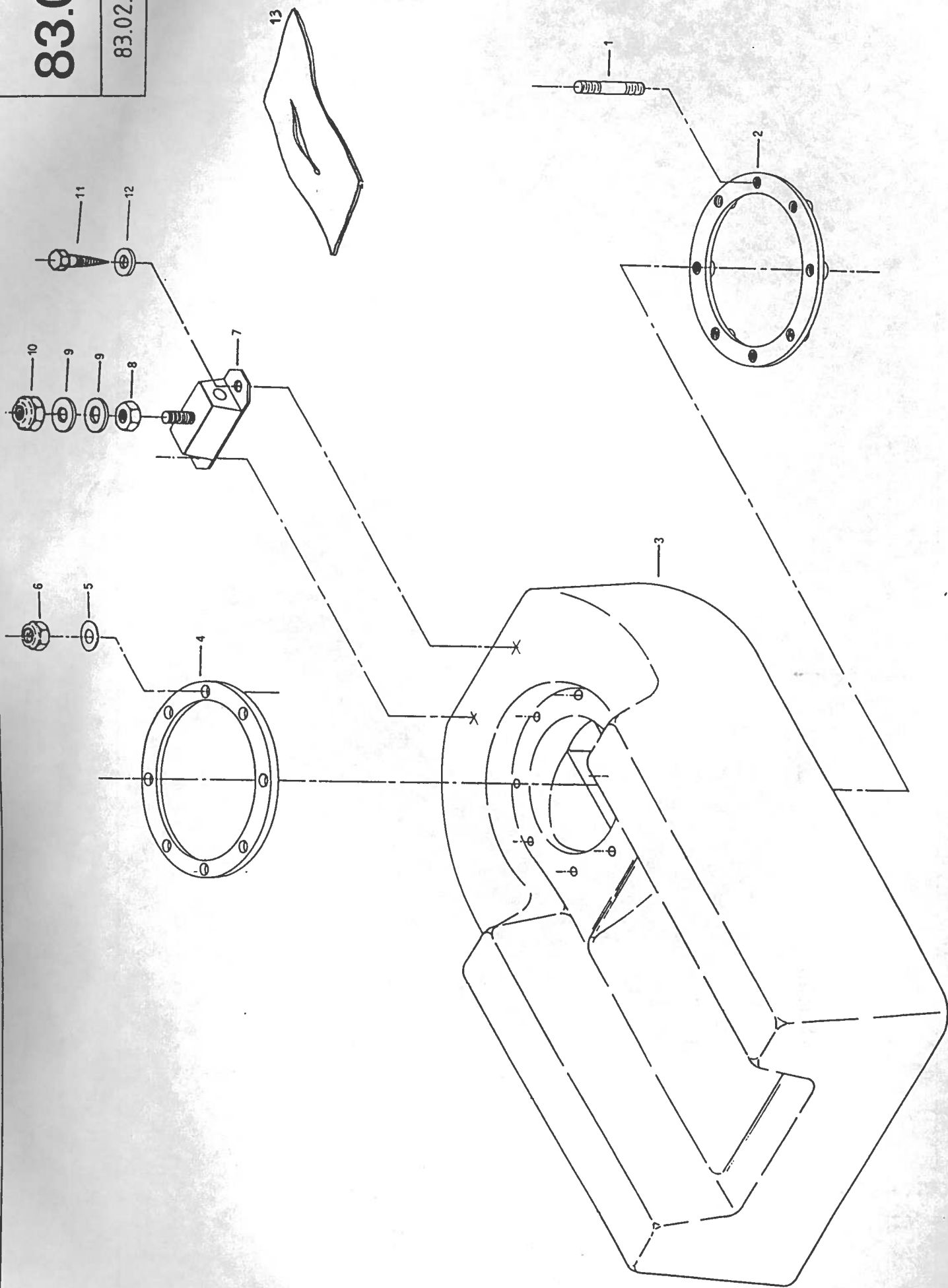
23-03-95

SAIL DRIVE TAIL

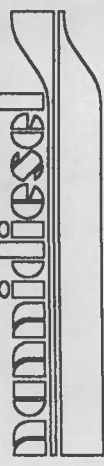
83.01.63

83.02

83.02.63



ITEM	PART N°	Qty	DESCRIPTION	REMARKS	ITEM	PART N°	Qty	DESCRIPTION	REMARKS
1	310145	8	STUD						
2	310146	1	BASE LOWER FLANGE						
3	307784	1	BASE FOR S-DRIVE	2.50HE-3.75HE					
	310397	1	BASE FOR S-DRIVE	3.100HE					
4	310147	1	BASE UPPER FLANGE						
5	37324	8	WASHER	ø8					
6	494520	8	NUT	M8					
7	310054	1	SILENTBLOCK						
8	607318	1	NUT	M12					
9	409153	2	WASHER	ø12					
10	39360916	1	NUT	M12					
11	38261401	10	SCREW FOR WOOD						
12	119135	10	WASHER	ø10					
13	778024	1	RUBBER FLECTOR						

SAIL DRIVE 2.50-3.75				GROUP DESCRIPTION : 83.02	PAGE
13-03-98				SAIL DRIVE BASEMENT	83.02.63