

KS-200A+ Rectification Explanation Document

Applicable Models: KS-200A+

Document Type: Instruction Manual

Version: V1.0

1. Rectification Background

1.1 Issue Overview

- We have identified certain deficiencies in the current product, where the AIS signals transmitted by the device fail to display the MMSI code when received by MarineTraffic base stations. These issues negatively impact user experience and require immediate corrective actions to ensure product quality and meet customer expectations.

2. Detailed Operating Steps

2.1 Preparation of Tools

Tools/Materials Preparation	Instructions
• Screwdriver	
• Soldering Iron	Temperature:320~380°C
• Safety Goggles	

Tools Illustration Guide

- Screwdriver



- Soldering Iron



2. Implementation Steps for Modification

2.1 Remove the rear case screws using a screwdriver



2.2 Locate the KS-20A shielding metal case and remove the screws on both sides



2.3. Use a screwdriver to remove the screws on both the top and bottom sides of the shielding metal cover.



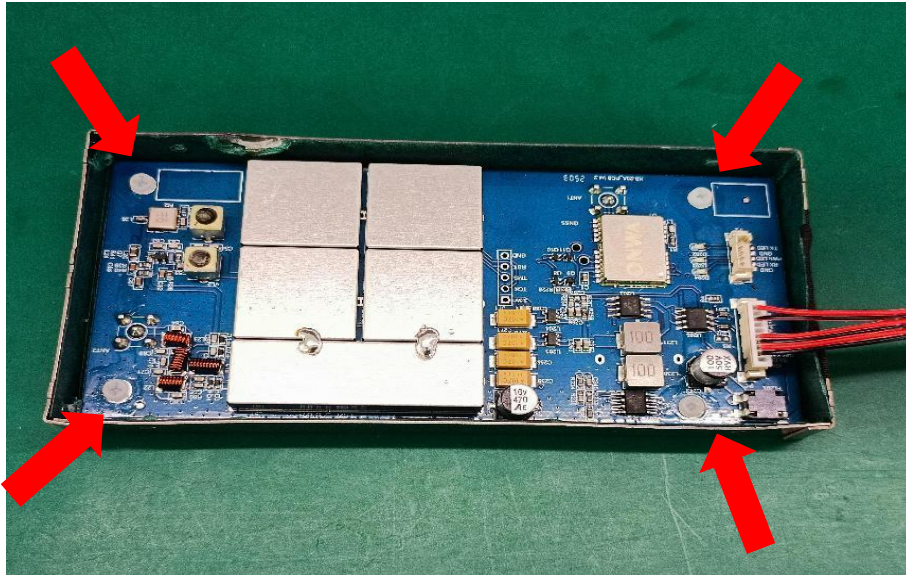
Top Screws



Bottom Screws

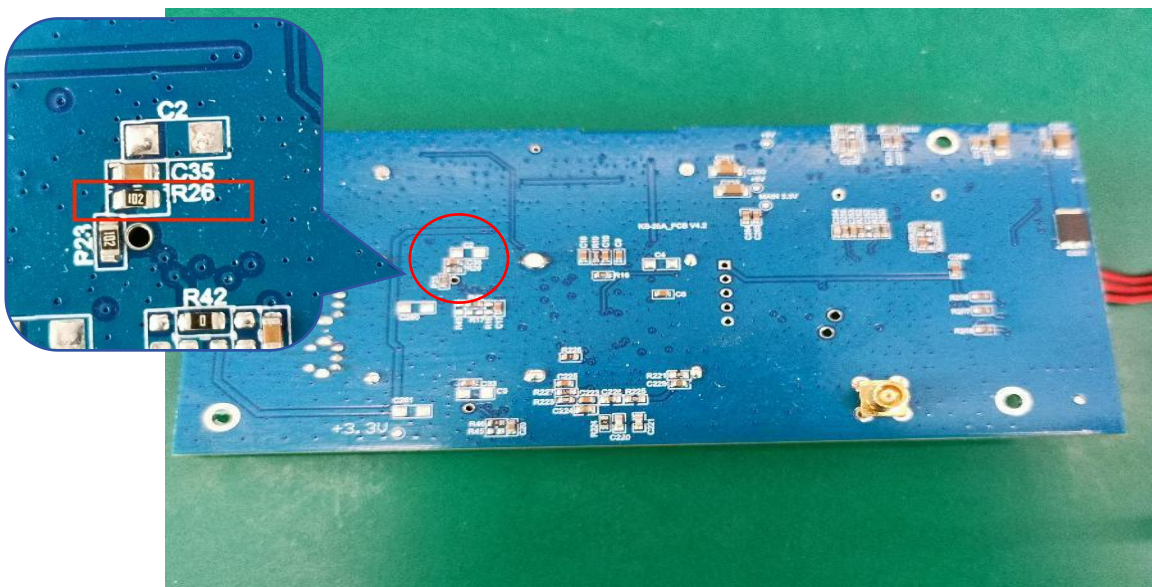
2.4. Use a screwdriver to remove the internal plastic screws.

Note: The plastic screws are secured with adhesive and may be difficult to disassemble.



2.5. Flip the motherboard to the back side, use a soldering iron to heat and remove resistor R26 to complete the modification.

(In special cases where a soldering iron is unavailable, diagonal cutters may be used to clip off the resistor. Avoid damaging other components during the operation.)



2.6 Place the motherboard back into the shielding metal casing, fasten the plastic screws, secure the shielding metal casing with screws, reinstall it into the main unit, and tighten the screws on the outer casing to complete the operation.



2.7 Test Results

After connecting the device to the antenna and waiting for a while, access the MarineTraffic website and search for the device's own MMSI code. If the device's own MMSI is found, the rectification is successful this time.

ONWA 2108 Fishing MMSI: 412552108

Overview | Port call log | Vessel characteristics | Ownership | Performance insights | In the news

Where is the ship?
Fishing ONWA 2108 is currently located in the South China (reported 11 minutes ago)

What kind of ship is this?
ONWA 2108 (MMSI: 412552108) is a Fishing and is sailing under the flag of China. Her length overall (LOA) is 29 meters and her width is 17 meters.

General		Latest AIS information	
Name	ONWA 2108	Navigational status	Class B
Flag	China	Position received	12 mins ago
IMO	-	Vessel's local time	2025-03-25 19:37 (UTC+8)
MMSI	412552108	Latitude/Longitude	Upgrade to unlock
Call sign	-	Speed	0 kn
AIS transponder class	Class B	Course	331 °
General vessel type	Fishing	True heading	331 °
Detailed vessel type	Fishing	Rate of turn	-
Service Status	Upgrade to unlock	Draught	-
Port of registry	Upgrade to unlock	Reported destination	-
Year built	Upgrade to unlock	Matched destination	-
		Estimated time of arrival	-
		AIS source	Terrestrial

Departure from Lagos
NG LOS
Actual time of departure: 2025-01-04 15:58 (UTC+1)

Businesses
At arrival location | Near the vessel

3.Precautions

3.1Burn Prevention

- The soldering iron tip can reach temperatures exceeding 300°C—do not touch. Keep it away from power cables during operation.

- Always place the soldering iron on a stand to prevent tipping.

3.2Ventilation

- Solder fumes contain lead and harmful gases (e.g., rosin vapors).

Operate in a well-ventilated area or use a fume extractor.

3.3Anti-Static Measures

- Wear an anti-static wrist strap to prevent electrostatic discharge (ESD) damage to components.