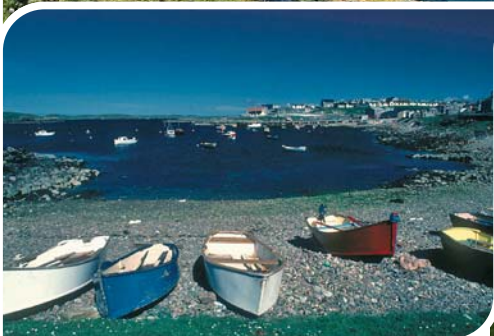


# Shetland MARINAS



**SHETLAND**  
PRIDE OF PLACE





# LERWICK HARBOUR



...A great place to  
meet and compete!



Sail right into the town centre! Stroll across the street to shops, restaurants and bars. Enjoy ease of access to the Shetland Islands' many attractions.

A fascinating heritage and cosmopolitan culture. Spectacular scenery and wildlife. Indoor and outdoor activities. Entertainment traditional and modern. A larder of fresh produce. Quality crafts.

Cruise along 900 miles of coast, or compete in international and local events.

## Lerwick - the seaway to something special!

- Expanded berthing and services for yachts
- No yacht size restriction
- Services including electricity, fresh water, fuel & refuse disposal
- Chandlery, boatyard repairs, electronics & sailmaker
- 24-hour shower & laundry facilities
- VHF call channels 12 & 16 manned 24-hours



LERWICK PORT AUTHORITY

Albert Building, Lerwick, Shetland ZE1 0LL Fax: 01595 693452 Tel: 01595 **692991**

E-mail: [info@lerwick-harbour.co.uk](mailto:info@lerwick-harbour.co.uk) Web: [www.lerwick-harbour.co.uk](http://www.lerwick-harbour.co.uk)



# Contents



<b>Introduction</b>	<b>4</b>
<b>Map</b>	<b>6</b>
<b>Lerwick, Bressay &amp; Noss</b>	<b>8</b>
<b>South Mainland</b>	<b>11</b>
<b>Scalloway &amp; Burra</b>	<b>14</b>
<b>West Mainland</b>	<b>17</b>
<b>North Mainland</b>	<b>22</b>
<b>North Isles</b>	<b>28</b>
<b>East Mainland</b>	<b>36</b>
<b>Useful Information</b>	<b>40</b>



## Cruising on Top of Britain

Shetland, Britain's most northerly area, is something of an undiscovered cruising destination. Yachtsmen are increasingly looking beyond their home waters for interesting sailing challenges, and Shetland offers a cruising ground that is easily accessible from most of north west Europe, but with no need to cross oceans.

Cruising in the Shetland Archipelago, with its 100 small islands and 900 miles of coastline, offers a beautiful combination of dramatic cliffs and natural harbours. Piers and small marinas nestle in sheltered and scenic inlets, and the coastal landscape forms a dramatic backdrop.

Your yacht allows you unrestricted access to the smaller islands, and nowhere on the land is more than three miles from the coast. Interesting walks, great fishing in fresh water lochs, and five millennia of history can be enjoyed at over 6,000 archaeological sites.

**"YACHTING HAS AN IMPORTANT PLACE IN THE SHETLAND CALENDAR, WITH 17 LOCAL REGATTAS HELD EVERY YEAR"**







Shetland is also one of Europe's unique wilderness environments. Birds, seals, otters, dolphins and whales are everywhere – the whole island group is a naturalist's paradise! Much of the coast is steep-to, with deep water close to shore, fantastic water clarity and hazards well-charted.

Shetland's historic links with the sea have shaped a very special marine culture and infrastructure, so facilities available for boating are excellent. Marinas and piers form the heart of the islands' small communities, and you can be sure that local folk will extend a warm and practical welcome to every visiting seafarer.

Yachting has an important place in the Shetland calendar, with 17 local regattas held every year, as well as the Round Foula Race, the Lerwick to Skerries Race, and the International Bergen-Shetland Races. Most of these welcome entries from visiting yachts. The Round Britain and Ireland Race has called at Lerwick in June since 1985.

Shetland's location also makes it a useful stopping point during longer passages, whether heading south to the UK, east to Norway, north to Faroe, or perhaps even further afield.



## Yachting Information

Any well-found yacht that has sailed to the Shetland Islands will be well equipped for cruising in the area, however, it is advisable to carry a heavier anchor, not only for security in heavy weather, but because many anchorages have extensive kelp (seaweed) on the seabed.

### Weather

The Shetland Islands lie at 60°N, but enjoy a warm climate for their latitude, thanks to the warm waters of the Atlantic. The weather is relatively dry, although changeable. Fog occurs on average on 3 days per month in summer, and gales on less than 1 day.

### Tides

Tidal streams can be strong around exposed headlands and in the sounds between the larger islands. Time your passage to use them to your advantage. Admiralty Tidal Stream Atlas (NP209) should be carried.

### Charts and Sailing Directions

Yachts should carry the appropriate charts for their cruise, which can be selected from the Admiralty Chart Catalogue (NP109), or from [www.ukho.gov.uk](http://www.ukho.gov.uk)

The Clyde Cruising Club's Shetland Islands is the only Sailing Directions describing yacht anchorages and inshore passages in Shetland, and is essential ([www.clyde.org](http://www.clyde.org))

Note that the chart illustrations and harbour diagrams in this publication are for guidance only and should not be used for navigation.

### Marinas

Some of the smaller marinas are too shallow for use by cruising yachts, but are useful for landing by dinghy. If a marina or pier master cannot be contacted, visitors should proceed to a berth. There will usually be a local person willing to give advice and lend a helping hand. All marinas have a £5 per day charge.

### Fish Farms

Care must be taken when navigating or anchoring near fish farms, which are marked by buoys, usually lit.

### Cruising Panel

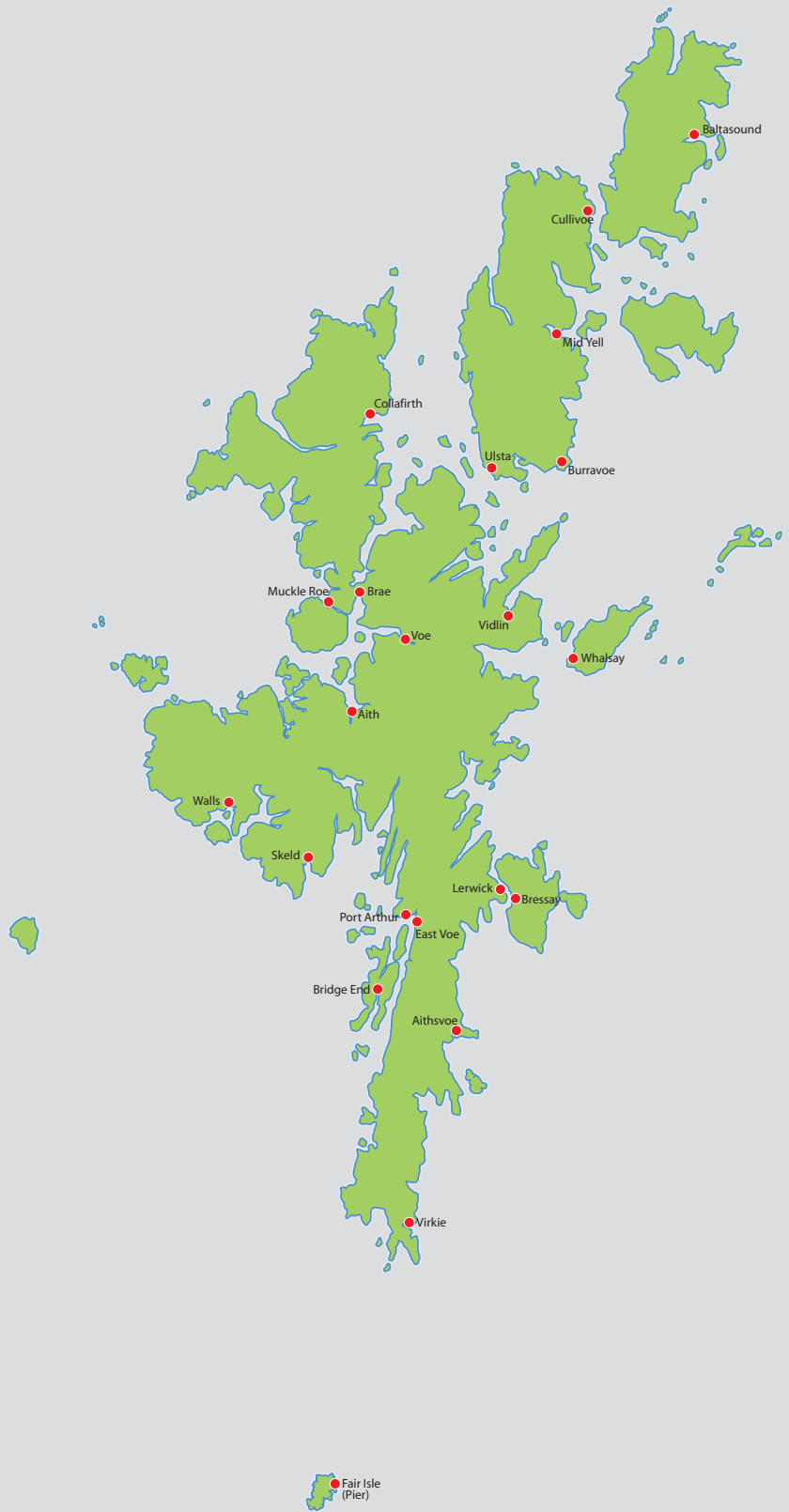
Visit Shetland has put together a panel of local sailors with a wealth of knowledge and experience to answer your questions on sailing to Shetland. Email them on: [sailinginfo@visitshetland.com](mailto:sailinginfo@visitshetland.com)

[www.visitshetland.com](http://www.visitshetland.com)

# Map



# Map









# LERWICK

60°09'N 01°08'W

## VICTORIA PIER PONTOON

**Depth (low water):** 8m (mouth of dock) 1.2m (inner corner)

**Port Control VHF:** VHF Ch 12 (24hrs)

**Contacts:** Lerwick Port Authority, +44 (0)1595 692991  
Email: [info@lerwick-harbour.co.uk](mailto:info@lerwick-harbour.co.uk)  
Lerwick Boating Club, +44 (0) 1595 692407

**Charges:** £0.60 per metre per day

**Yacht Facilities:** Toilets, showers, electricity, fuel, water, telephones, laundry, disabled facilities, waste and waste oil disposal points

**Nearby:** Slipway, repairs, chandlery, boat hoist, engineering, boating club, lifeboat station, coastguard station

**Other Facilities:** Wireless internet access (through VisitShetland), shops, post office, leisure centre, swimming pool, food and drink, bus and taxi service, car hire, cash points

**Events:** <http://www.lerwick-harbour.co.uk/pdfs/events.pdf>

## LERWICK MARINA, GREMISTA

**Depth (low water):** 2.5m (outer pontoons) 1.8m (inner pontoons)

**Contact:** Bert Anderson +44 (0) 1595 692263/693537

Lerwick is the capital of Shetland and as the main centre for visiting yachts it is often the first port of call.

Lerwick Port Control keeps a 24 hour watch on VHF Ch 12 and visiting craft should contact the duty Port Controller on that channel before entering the harbour.

The principal berth for visiting yachts is the 70 metre floating pontoon situated in the heart of town at the Small Boat Harbour. The pontoon offers good shelter and can accommodate up to 7 yachts alongside, and many more when rafted up, at all states of tide. There is an additional pontoon situated in Albert Dock which visiting yachts are welcome to use when not in use by tenders from cruise ships. Dates of use by tenders are displayed on the pontoon and at Lerwick Port Authority's Office in Albert Building. Both pontoons are available from May to September. A visiting yachts welcome pack detailing the facilities and services at the Port is available on request and can be downloaded via their website at:

[www.lerwick-harbour.co.uk/pdfs/yachtpack.pdf](http://www.lerwick-harbour.co.uk/pdfs/yachtpack.pdf)

This bustling town has all you need when making a Shetland landfall - a Tourist Information Centre, Customs, a Coastguard station, helpful staff at Lerwick Port Authority, ship chandlers, supermarkets, licensed grocers specialising in marine supplies. If you have a problem, there's a shipyard, skilled repair engineers and a lifeboat station.

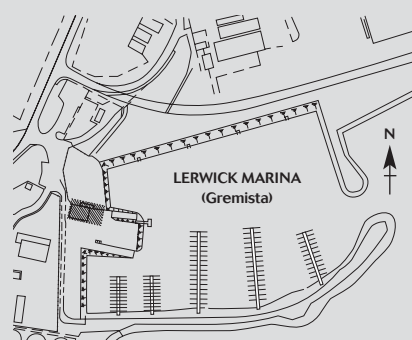
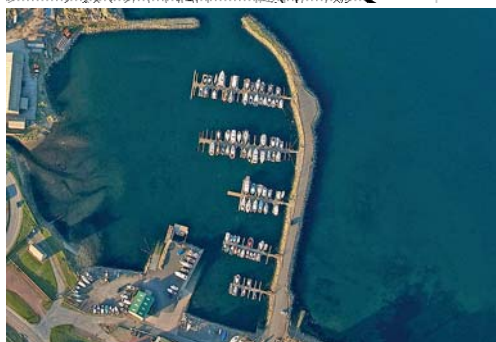
Just a step along from Victoria Pier is Lerwick Boating Club, where visiting crews are always welcome to take a hot shower, use the laundry and enjoy a drink at the bar with its fine view of the harbour. The key to the club's showers, toilets and laundry is usually available by arrangement from the Lerwick Port Authority Office at Albert Building on the Esplanade.

The club runs a busy summer programme of sailing races for dinghies and the famous 'Shetland Model' skiffs. Visitors are welcome as spectators or participants.

Enjoy Lerwick's great selection of high quality restaurants, cafes and bars all within easy walking distance of the harbour area. Also located nearby is the excellent Clickimin leisure complex. If you wish to find out more about Shetland's rich heritage & culture then take a stroll along the regenerated historic waterfront and visit the fantastic new five star rated Shetland Museum and Archives.

Lerwick Marina is situated at Gremista, at the north end of Lerwick Harbour, about 2km from Lerwick town centre. It is run by the Marina Users Association, with whom an arrangement can be made to use a vacant berth for longer, temporary stays. Each pontoon is accessed by a security gate and water and electricity supplies are available.

There is a slipway and a hoist for craft up to 12 tonnes and alternatively yachts of up to 1.8m draft can dry out alongside. Car and trailer parking is available just outside the marina. Winter storage ashore can be arranged with Lerwick Port Authority.



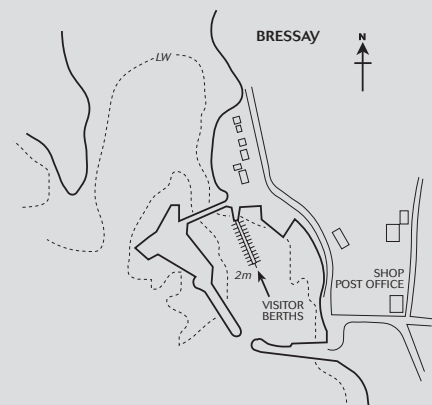
# BRESSAY

60°09'N 01°06'W

<b>Depth (low water):</b>	<b>2m</b>
<b>Contact:</b>	<b>Tom Mainland, 01595 820284</b>
<b>Charges:</b>	<b>£5 per day. No charges for overnight berthing</b>
<b>Yacht Facilities:</b>	<b>Toilets, electricity, fresh water, waste disposal, slipway</b>
<b>Other Facilities:</b>	<b>Telephone, shop, post office</b>

The island of Bressay, half a mile across the harbour, offers a complete contrast to the bustle of Lerwick, and the sheltered visitor berth in the marina at the Voe of Leirness is easy of access. Nearby, The Maryfield Hotel serves good pub-grub, and the island offers some fine hill and coast walking.

There is also a secluded anchorage in the North of the island at Aith Voe.



## NOSS

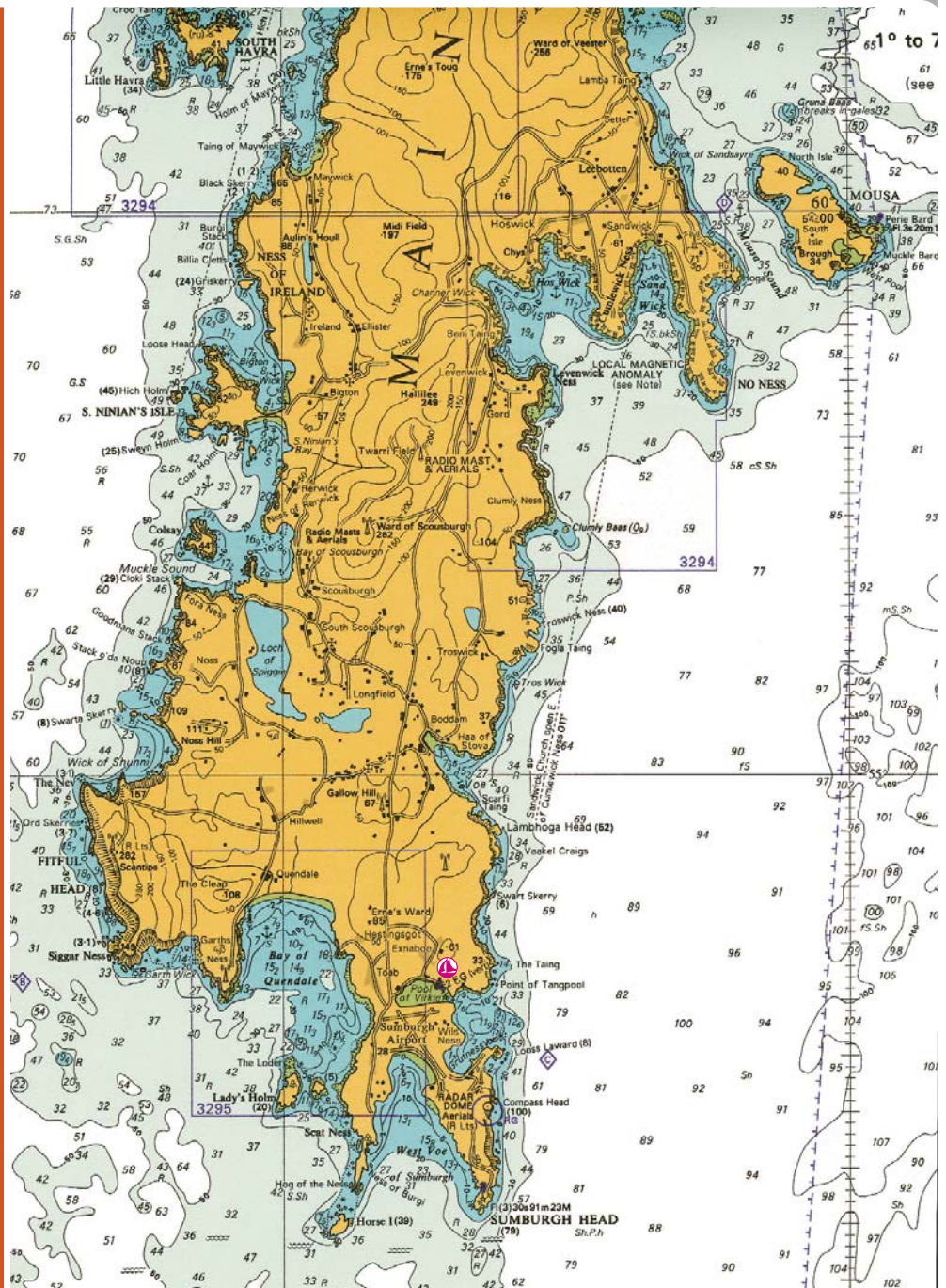
East of Bressay is the National Nature Reserve island of Noss, which has a day time anchorage at Nesti Voe. Arriving at Noss by boat is one of the most spectacular wildlife sights anywhere. The mile long sandstone cliffs have weathered to provide many thousands of nesting ledges, and at the peak of the breeding season the deafening chorus of around 150,000 birds and chicks is unforgettable - as is the smell of the guano which stains the cliffs white!

**Warning:** The bird cliffs on the east side of Noss are just off the edge of the detailed chart and, although the water is mostly deep, there are several dangerous reefs. Yacht skippers should take local advice before approaching the cliffs.



# South Mainland

**APPROACHING SHETLAND FROM THE SOUTH, OR ON PASSAGE AROUND THE NARROW PENINSULA OF SOUTH MAINLAND, THE VISITING YACHT WILL BE GREETED BY THE RUGGED SPLENDOUR OF SUMBURGH HEAD AND FITFUL HEAD, PART OF THE DRAMATIC BACKDROP OF OLD RED SANDSTONE CLIFFS AND BEAUTIFULLY SECLUDED ROCKY COVES (KNOWN LOCALLY AS GEOS), SOME OF WHICH OFFER A SHELTERED ANCHORAGES IN SUITABLE WEATHER. RICH IN WILD LIFE, THE AREA HAS SOME OF THE LARGEST SEA BIRD COLONIES, AND OTTERS, SEALS (GREY AND COMMON), PORPOISES, DOLPHINS, AND WHALES ARE LIKELY TO BE SEEN BY THOSE KEEPING A SHARP LOOKOUT. ASHORE, THE LANDSCAPE ABOUNDS WITH ARCHEOLOGICAL SITES AND AREAS RICH IN WILDLIFE.**



# VIRKIE

59°53'N 01°17'W

**Depth (low water):** 1 m max

**Charge:** £5 per day

**Contact:** Brian Halcrow, 01950 477260

**Yacht Facilities:** Toilets, electricity, fresh water, slip, boating club

**Other Facilities:** Telephone, bus service, car hire (at airport)

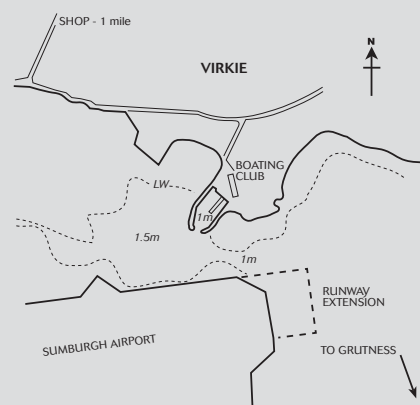
The Ness Boating Club Marina sits at the Pool of Virkie and has one visitor berth. The area is handy while waiting for the wind and tide to round Sumburgh Head and Fitful Head, or to make the Fair Isle crossing. The entrance to the marina is narrow and shallow so it is advisable to take local advice before entering.

Yachts with more than 1m draft will find nearby Voe of Grutness provides a good anchorage and a pier where toilets and fresh water are available, however the Fair Isle ferry has priority so vessels using the pier should not be left unattended.

Just 15 minutes' walk away are two amazing archaeological sites: Old Scatness and Jarlshof. Excavations at Old Scatness have revealed one of Britain's most exciting Iron Age Villages, with many buildings standing at or near roof height and some even 'decorated' with yellow clay! On-site interpretation, guides, and living history demonstrations of ancient crafts and skills during July and August each year illustrate how our ancestors lived.

Jarlshof is a complex archaeological site which came to light a hundred years ago when storms washed away the protective cover of sand. Excavations show the site to have been inhabited for around 4,200 years.

Sumburgh Head offers a good opportunity for spotting minke and killer (Orca) whales or, more commonly, the harbour porpoise feeding in the swirling tides around the tip of the south mainland. It also has the UK's most accessible colony of puffins, although the comical looking birds only land between April and July. The cliffs are also home to guillemots, kittiwakes and shags, as well as seals which haul out on the rocks below.





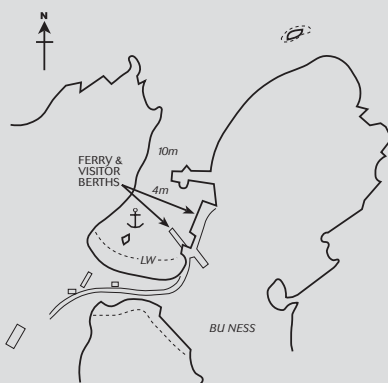
# FAIR ISLE

59°32.5'N 1°36'W

<b>Depth (low water):</b>	<b>4m max</b>
<b>Contact:</b>	<b>Jimmy Stout, 01595 760222</b>
<b>Charges:</b>	<b>Please see - <a href="http://www.shetland.gov.uk/ports/tableofdues/scalloway.asp">www.shetland.gov.uk/ports/tableofdues/scalloway.asp</a></b>
<b>Yacht Facilities:</b>	<b>Toilets, showers, fresh water, waste disposal (on pier)</b>
<b>Other Facilities:</b>	<b>Food and drink, telephone (all available 300 metres away at the bird observatory), shop and post office (2.5km)</b>

Fair Isle, world-famous for its knitting and bird life, has a well sheltered and easily accessible pier at North Haven, and a pontoon for visiting yachts, which can also anchor off the pier if preferred. The island makes a great stepping stone, whether on the way north to Shetland or heading south to explore the rest of Britain.

Other than North Haven, South Haven and South Harbour are possible alternative anchorages, although caution should be exercised, as they are both difficult to access safely. Consulting the Clyde Cruising Club's Sailing Directions to the Shetland Islands is essential.



Fair Isle's internationally acclaimed Lodge and Bird Observatory is around 300 metres from the pier and has toilets, showers and a telephone as well as serving excellent food.

The island lies in the migration paths from Scandinavia, Iceland and Faroe, consequently there are massive numbers of both common and rare visiting species. From April to August the cliffs are busy with thousands of fulmars, kittiwakes, razorbills, guillemots, black guillemots, gannets, shags and puffins, while skuas and terns fiercely defend their nests on the moorland. Grey and common seals are frequently seen, with harbour porpoises mostly sighted in summer. Whales and dolphins sometimes cruise close inshore, and white beaked Atlantic white sided dolphins, killer whales (orcas) and minke whales are often spotted from the mail boat "Good Shepherd" on passage to and from Shetland.

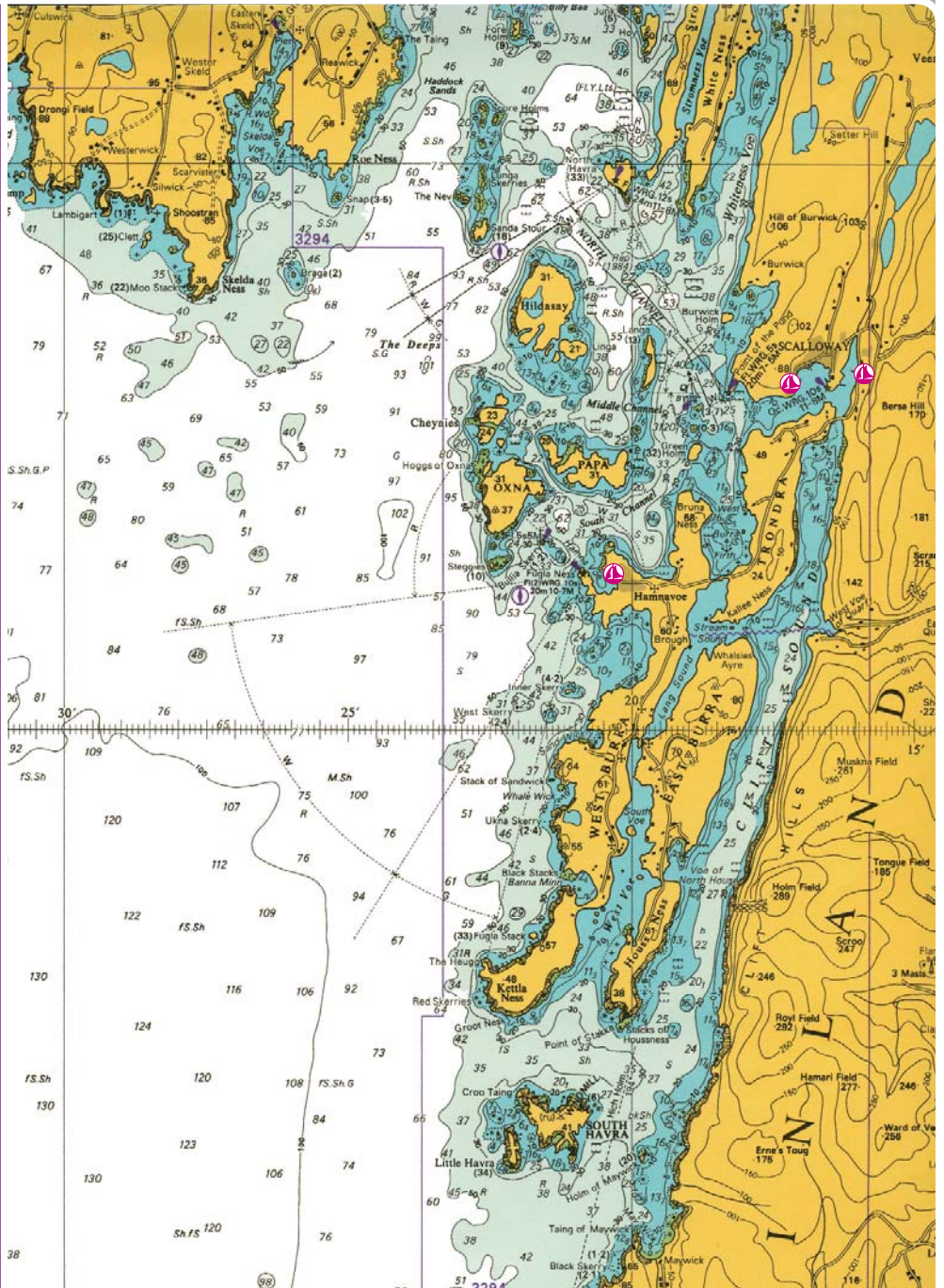
The George Walterson Memorial Centre and Museum in the former Fair Isle school on the south of the island is packed with displays of the island's history from prehistoric times to the present, and is definitely worth a visit for a unique insight into Fair Isle's past and a better understanding of its present.

Fair Isle is also famous for its knitting and the only source of the genuine Fair Isle garment is on this island. A small island cooperative, Fair Isle Crafts, produces quality knitwear labelled with Fair Isle's own trademark.



# Scalloway & Burra

**THIS CENTRAL AREA OF SHETLAND IS A LANDSCAPE OF INTRICATE CONTRASTS: LAYERS OF LIMESTONE MAKE SLASHES OF GREEN BETWEEN BROWN HILLS OF HARDER ROCK; LONG NARROW SEA LOCHS, OR VOES, GOUGED OUT BY GLACIERS, RUN MILES INTO THE LAND, AND STORM BATTERED ISLANDS SHELTER PEACEFUL ANCHORAGES. BOTH SCALLOWAY AND BURRA HAVE A RICH FISHING HISTORY, AND SCALLOWAY IS STILL A VERY BUSY HARBOUR. BURRA ISLE'S SHELTERED SOUNDS MAKE A PICTURESQUE DETOUR AND SCALLOWAY'S SURROUNDING WATERS AND OFFLYING ISLANDS LEND THEMSELVES TO EXPLORATION. IN PLACES LIKE THIS, THE ADVANTAGES OF TRAVELING BY BOAT ARE CLEAR.**



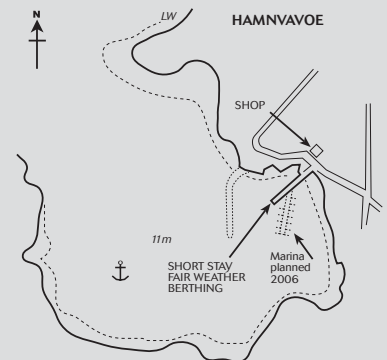


## HAMNAVOE

60°06.3'N 01°20.3'W

<b>Depth (anchorage):</b>	<b>10m</b>
<b>Contact:</b>	<b>Terry Scott, 01595 859444</b>
<b>Charges:</b>	<b>£5 per day</b>
<b>Yacht Facilities:</b>	<b>None</b>
<b>Other Facilities:</b>	<b>Shop and post office</b>

Hamnavoe is an attractive natural harbour with a small pier and is an ideal base to explore the nearby uninhabited islands of Oxna, Papa, Cheynies and Hildasay. The pretty fishing village, overlooks the sheltered inlet of Hamna Voe, protected from the open Atlantic by the arm of Fugla Ness and its lighthouse. However, the haven has very many moorings, and advice should be sought before anchoring, or temporary use of a mooring, is requested.



## BRIDGE END

60°04.9'N 1°19.9'W

<b>Depth (low water):</b>	<b>1.5m. max.</b>
<b>Contact:</b>	<b>Jim Anderson 01595 859332, Bobby Hunter 01595 859270</b>
<b>Charges:</b>	<b>£5 per day</b>
<b>Yacht Facilities:</b>	<b>Electricity on pier by arrangement, fresh water on pier, rubbish disposal, slip.</b>
<b>Other Facilities:</b>	<b>Outdoor Centre (£15 day) has toilets, showers, telephone and laundry.</b>

Bridge-End marina is situated at the head of South Voe where a buoyed channel provides access, this channel is best approached with high water. Water depth at the pontoons is 3 metres, with 2 metres at the pier.

Electricity and water can be provided and facilities are available for rubbish disposal. Local shop is located 2 miles from the marina and a

marine engineering business is located adjacent to the marina. For further details phone Bobby Hunter on 01595 859270 or Jim Anderson on 01595 859332.



# SCALLOWAY

60°08'N 01°16.7'W

## HARBOUR DISTRICT

**Yacht Facilities:** Power, water, fuel, engineering services, electrical repairs, boat yard, waste reception. Showers and laundry at the boating club.  
See details below

**Other Facilities:** Shops, swimming pool, boating club, food and drink, taxi service, accommodation, telephone, cash machine

## EAST VOE MARINA

**Depth:** 6m

**Charges:** £5 per day

**Contact:** Eddie Sinclair, 01595 880476

## SCALLOWAY PIER (BLACKSNESS)

**Depth:** 7.0 - 4.8m (3.5m at low level quay)

**Charges:** Please see - [www.shetland.gov.uk/ports/tableofdues/scalloway.asp](http://www.shetland.gov.uk/ports/tableofdues/scalloway.asp)

**Contact:** Allister Rendall, 01595 880574,  
[scalloway.harbour@sic.shetland.gov.uk](mailto:scalloway.harbour@sic.shetland.gov.uk)

**VHF Ch:** 9 12 16

Duty Harbour Master/Port Control, 01806 242551

## PORT ARTHUR MARINA

**Depth:** 5.0 - 2.0m

**Contact:** Hamish Jamieson, 01595 880649 or Scalloway Boating Club

## SCALLOWAY BOATING CLUB PONTOON

**Depth:** 4m max

**Charges:** £5 per day. No charges for overnight berthing

**Contact:** Scalloway Boating Club, 01595 880388

Scalloway, capital of Shetland until the 17th century, provides a storm-proof harbour and everything a visiting yacht requires. The harbour is sheltered from all wind directions by the islands of Trondra and Burra, and can be accessed at all states of the tide and in all weather conditions.

The approaches and the harbour are well lit with various navigational aids.

When arriving in Scalloway the visitor's pontoon is near Scalloway Boating Club (SBC) at Port Arthur, on the western side of the outer harbour. Alternative berths are at the club's marina at Port Arthur, at East Voe Marina by arrangement with the Users' Association, and at Blacksness Pier, on the west side of the inner harbour.

Facilities including toilets, showers, and laundry are available at the boating club, which is open Monday–Thursday 1900 till late, Friday 1500 till late and Saturday and Sunday 0900 till late.

Marine diesel is available from a pontoon berth near Blacksness Pier. Ship chandlery and waste oil disposal are also available at or near Blacksness Pier.

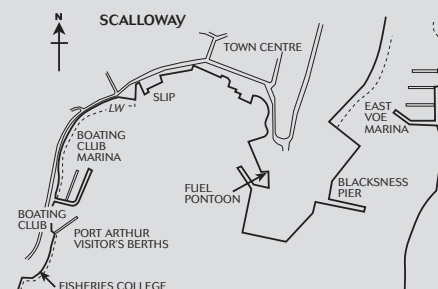
The Scalloway Boating Club pontoon and the Port Arthur Marina are close to the Boating Club, which extends a legendary welcome, and

Da Haaf restaurant at the Atlantic Fisheries College is a renowned seafood restaurant .

On the main street a charming little museum depicts the saga of the wartime 'Shetland Bus' operation based here from 1942 - 1945, when Norwegian fishing boats which sailed to Shetland from German-occupied Norway, bringing refugees to safety and returning with ammunition and resistance fighters.

Scalloway Castle was built using slave labour by Earl Patrick Stewart, who was executed for treason in 1615.

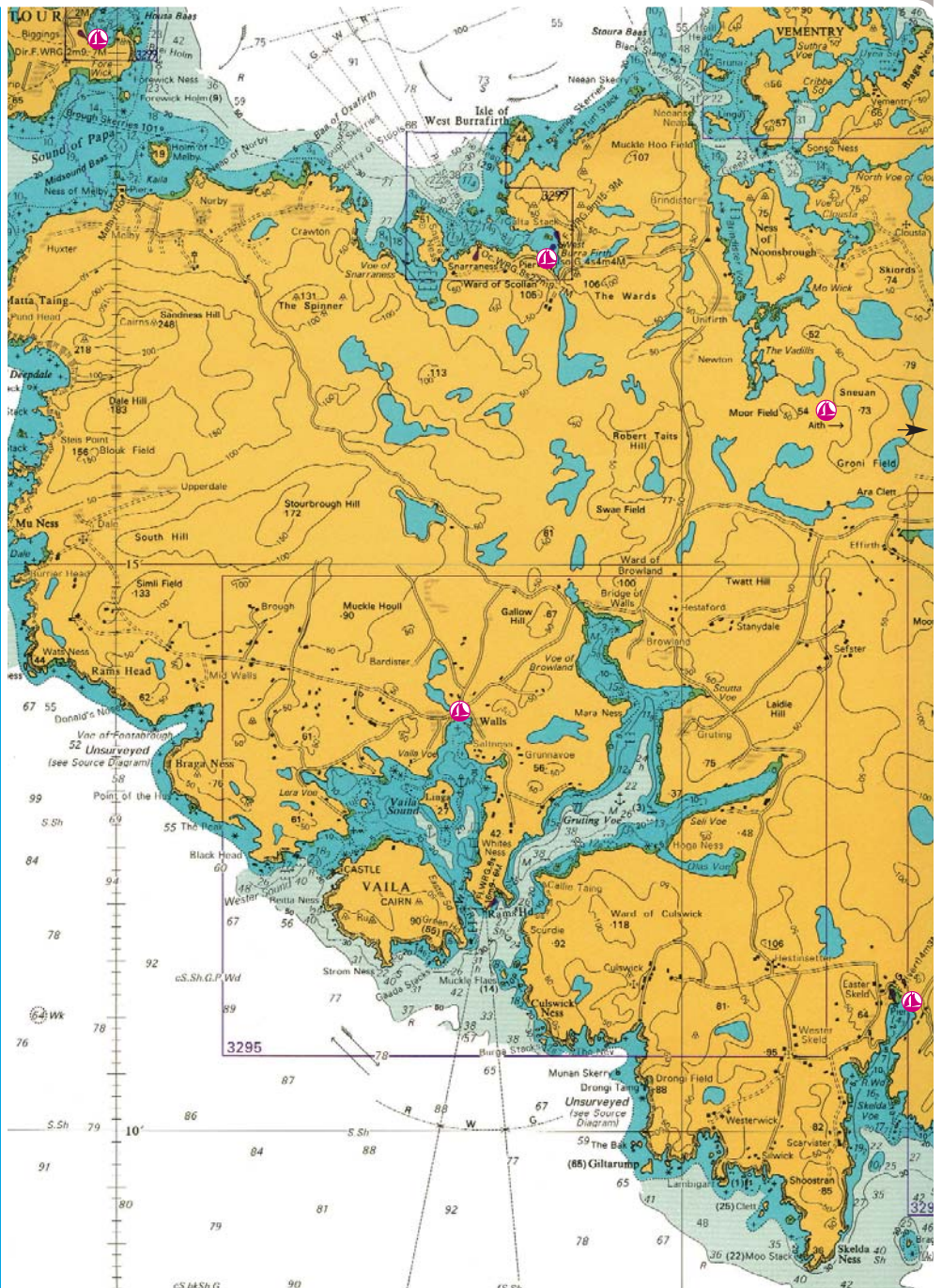
The family run Scalloway Hotel, on the main street, offers a menu featuring locally caught seafood and local produce. There are well stocked shops, a post office, a butcher, a fish and chip shop, and hairdressers.





# West Mainland

**THE WEST SIDE OF SHETLAND OFTEN HAS THE BEST WEATHER, AND GETS MOST SUNSHINE, PARTICULARLY DURING THE SUMMER MONTHS WHEN THE EAST COAST MAY BE ENVELOPED IN SEA FOG WHILST THE WEST IS WARM AND SUNNY. ALMOST REGARDLESS OF THE WIND DIRECTION YOU WILL USUALLY FIND A SHELTERED BAY, AND THE SURROUNDING WATERS OFFER EXCELLENT FISHING. THERE ARE THREE MARINAS, AND SEVERAL OTHER ANCHORAGES ON THIS STRETCH OF COAST. WHILE RURAL TRADITION LIES FIRMLY IN CROFTING, THE WEST MAINLAND HAS LATTERLY BECOME ONE OF THE MAIN CENTRES OF THE SEAFOOD INDUSTRY, WITH MANY FISH FARMS AND MUSSEL LINES. THESE ARE MARKED BY LIT, YELLOW BUOYS, AND YACHTS SHOULD KEEP CLEAR.**



# SKELD

60°09'N 01°27'W

**Depth (low water):** 2.5m

**Contact:** James & Josephine Scott, 01595 860287

**Charges:** £5 per day

**Yacht Facilities:** Toilets, shower, fuel, electricity, fresh water, waste disposal

**Other Facilities:** Telephone, laundry, post office, bus service, taxi service

Skeld is a landlocked haven with an excellent pier and new marina. There are 8 visitor berths as well as a floating pontoon with space for another 20 or more.

When entering the narrows of Skeld Voe keep centre then point towards the church to avoid the shallow water on the west side of centre line.

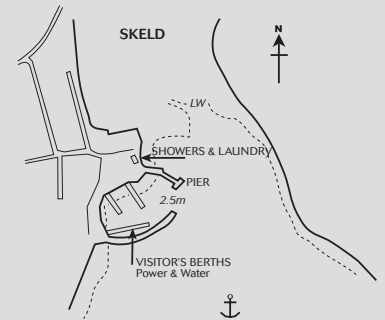
For a real taste of Skeld hospitality schedule your trip for the third week of July (approx) when the annual regatta is held. There is rowing, yachting, fishing and socialising!

The village is home to a smokehouse which produces a wide range of seafood.

A bus service leaves for Lerwick at 0745hrs and 1320hrs and returns from Lerwick at 1705hrs.

Further west are two of the most exquisite bays in Shetland: Westerwick and Culswick, each a narrow green valley ending in a pebble beach fringed by sea stacks, cliffs and caves.

There is a small marina in Gruting Voe.





# WALLS

60°13.5'N 01°33.7'W

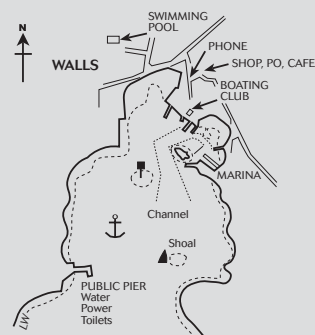
	MARINA	BOATING CLUB	PIER
<b>Depth (low water):</b>	<b>1.5m</b>	<b>1.5m</b>	<b>4.0m</b>
<b>Contact:</b>	<b>John Isbister 01595 809311</b>	<b>Andrew Tait 01595 809277</b>	<b>Larry Inkster, 01595 809293</b>
<b>Charges:</b>	<b>£5 per day</b>	<b>£5 per day</b>	<b>Please see - <a href="http://www.shetland.gov.uk/ports/tableofdues/scalloway.asp">www.shetland.gov.uk/ ports/tableofdues/ scalloway.asp</a></b>
<b>Yacht Facilities:</b>	<b>Toilets (at the public pier), showers, fuel, electricity (by arrangement), fresh water, waste disposal, fuel at shop, slip, boating club (open weekends)</b>		
<b>Other Facilities:</b>	<b>Public telephone (at shop), post office, shop, swimming pool, bus service, café, ferry to Foula</b>		

Walls is a sheltered harbour, protected from southerly gales by the islands of Linga and Vaila, and has a public pier, a marina with 2 visitor's berths, and a second pier at the Walls Boating Club. Deep draft yachts should use the public pier.

As you approach the head of the harbour, take a wide berth around all shoals, and enter the marina to the north of the small island. Power and water are available at the public pier, which is more suitable for larger yachts. The cheerful boating club and the family run bakery and tea room are close at hand.

This is the starting point for the annual Round Foula Yacht Race as well as the Walls Regatta held every year. Just off Vaila Sound is an award-winning restaurant, Burrastow House, where much of the food is grown on the premises in one of Shetland's most productive gardens.

Vaila island has an area of around 3km<sup>2</sup> and supports a magnificent Edwardian mansion, the largest house of its kind in Shetland as well as the ancient watch tower, Mucklabery Castle.



# WEST BURRAFIRTH

60°17.8N 1°32.1W

<b>Depth (low water):</b>	<b>4m at pier</b>
<b>Contact:</b>	<b>Roger Moore, 01806 244200</b>
<b>Charges:</b>	<b>Please see - <a href="http://www.shetland.gov.uk/ports/tableofdues/scalloway.asp">www.shetland.gov.uk/ports/tableofdues/scalloway.asp</a></b>
<b>Yacht Facilities:</b>	<b>Toilets, showers, fuel, fresh water, waste &amp; waste oil disposal, slip</b>
<b>Other Facilities:</b>	<b>Telephone</b>

West Burrafirth makes a good anchorage featuring a pictish broch and shelters the pier for the Papa Stour ferry.

To the east lies uninhabited Vementry Isle and the sound of Swarbacks Minn, the entrance to Aith Voe, Olna Firth, and Busta Voe - a former naval anchorage. As you enter, look up towards Vementry's First World War watch tower and two gun emplacements which guard the sound. The Isle also features Shetland's best-preserved chambered cairn.



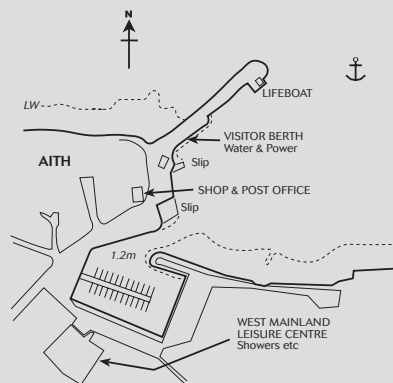


# AITH

60°17.3'N 01°22.3'W

<b>Depth (low water):</b>	<b>1.2m</b>
<b>Contact:</b>	<b>Victor Gray, 01595 810378, victor@aith.freeserve.co.uk</b>
<b>Charges:</b>	<b>£5 per day</b>
<b>Yacht Facilities:</b>	<b>Electricity, fresh water, lifeboat and coastguard station, waste &amp; waste oil disposal, slip, repairs, chandlery, engineering service, boating club</b>
<b>Other Facilities:</b>	<b>Telephone, shop, post office, leisure centre, swimming pool, bus service, pub/bar</b>

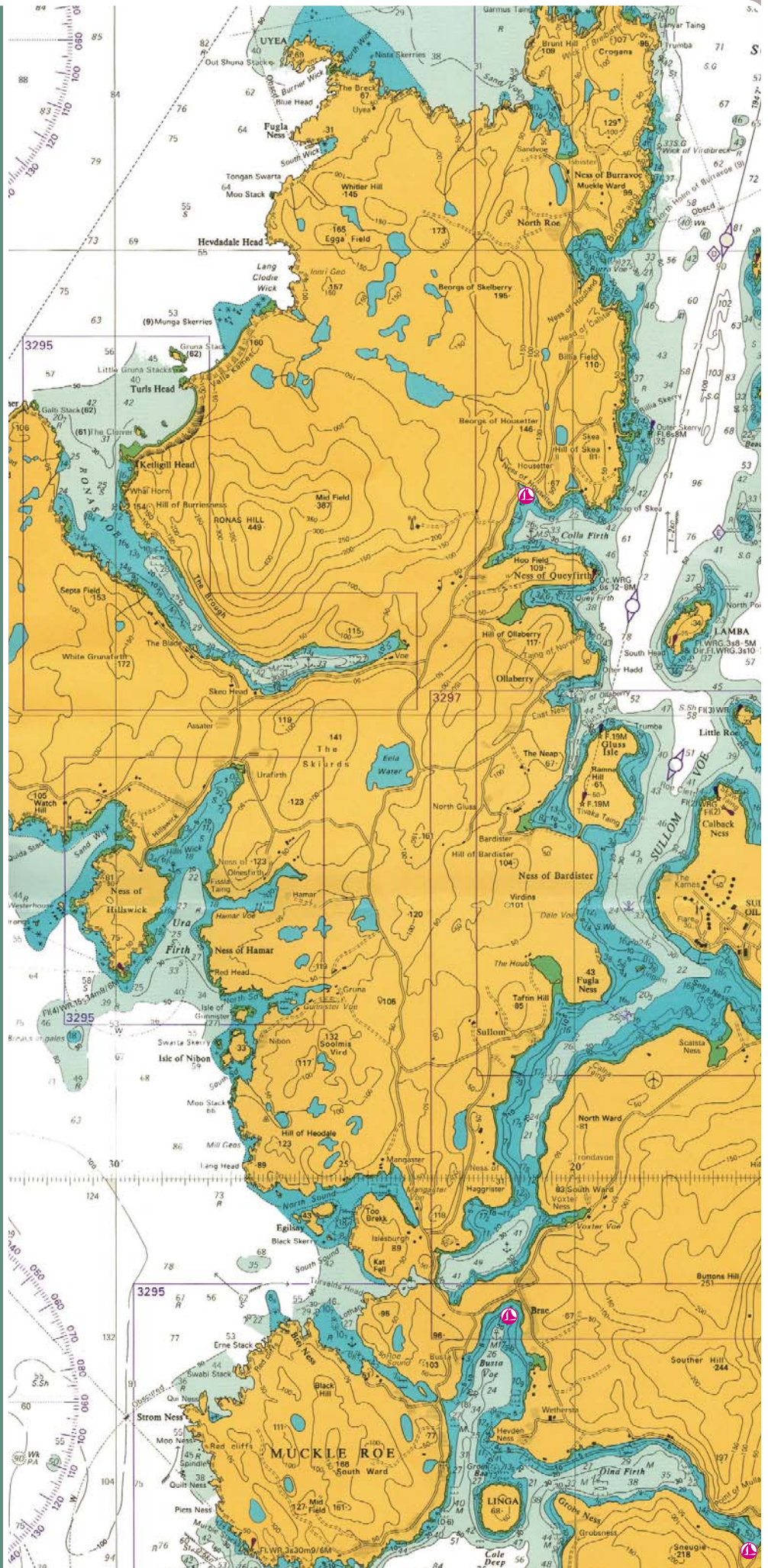
Aith has a marina with 2 visitor berths; however if these are too shallow or are taken, the public pier provides a first class berth. The pier is accessible at all states of the tide and provides good shelter from all wind directions. Shower facilities can be found at the Leisure Centre, a short walk from the pier. Aith is also the most northerly lifeboat station in Britain with one of the most modern RNLI lifeboats, a 17m long-range Severn class boat.





# North Mainland

**THE COASTLINE OF THE NORTH MAINLAND IS CHARACTERISED BY CHARMING, DESERTED BEACHES, EXTRAORDINARY ROCK FORMATIONS, TRANQUIL, SHELTERED VOES AND REMARKABLE CLIFFS. THE SCENERY IS WILD AND THE COASTLINE IS AMONGST THE MOST SPECTACULAR IN SHETLAND. THE SURROUNDING WATERS ARE HOME TO WHALES, DOLPHINS AND OTTERS AS WELL AS GANNETS AND SKUAS, AND THE LESS COMMON MIGRATORY SOOTY SHEARWATERS OR POMARINE SKUAS IN SUMMER.**





# VOE

60°21'N 1°16'W

**Depth (low water):** 3.75m

**Contact:** Keith Robertson, 01806 588708

**Charges:** £5 per day

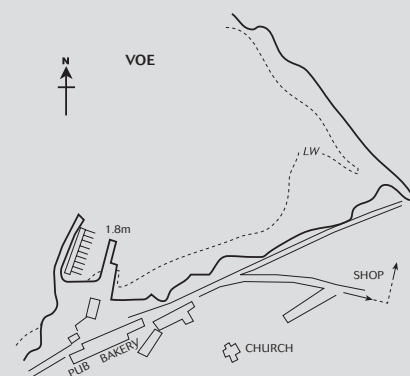
**Yacht Facilities:** Toilets, showers, fuel, electricity, fresh water, slip, repairs

**Other Facilities:** Telephone, shop, food and drink, bus service

Voe, the most Norwegian-looking village in Shetland, nestles at the head of the deep, sheltered, sea loch of Olna Firth where there is a newly rebuilt pier and marina. The approach is narrow and a care should be taken to avoid mussel farming areas.

The traditional part of the village lies along the waterfront; the Pierhead, a wood-paneled pub/restaurant fully captures the essence with a real fire and occasional live music as well as offering the very best in traditional ales, wines and spirits and food prepared from the freshest, local produce (01806 588332).

Joinery and welding workshops are available and Johnson & Wood's Voe Bakery is also situated on the waterfront (10806 588245). A shop, Tagon Stores (01806 588286) and play park are situated on the main road up the hill from the pier.



# BRAE

60°23.5N 1°21.7W

<b>Depth:</b>	<b>2m (inside Breakwater)</b>
<b>Contact:</b>	<b>John Ratter, 01806 522 524</b>
<b>Charges:</b>	<b>Visiting yachts - £5 per day, Caravans - £10 per night</b>
<b>Yacht Facilities:</b>	<b>Water, electricity, showers, toilets, laundry, boating club</b>
<b>Other Facilities:</b>	<b>Chandlery, Mini Super Market and Post Office, Garages, Busta House Hotel, Mid Brae Inn and Brae Hotel are all within walking distance of the marina and club house</b>

Busta Voe is recognised as one of the most popular sailing venues in Shetland. Located at the head of the Voe is the Delting Boating Club and the Delting Boating Club Marina, the new 54th berth marina opened in 2007.

The marina offers berths for visitors with fresh water, refuelling facilities and shore power all available. At the nearby Boating Club, caravan and yacht visitors can use the shower, toilets and laundry facilities and caravans and mobile homes can hook up to supply bollards for electricity and fresh water.

The club is open every night and visitors are most welcome to use the bar facilities.







# WEST COAST

<b>Depth (low water):</b>	<b>Anchor in 6m</b>
<b>Charges:</b>	<b>£5 per day</b>
<b>Yacht Facilities:</b>	<b>Water, diesel, repairs, chandlery, boating club</b>
<b>Other Facilities:</b>	<b>Shop, Post Office</b>

The anchorage at Brae, at the head of Basta Voe, has a shop, post office and good facilities for visitors at Busta House Hotel, the Brae Hotel, the Mid Brae Inn and the Delting Boating Club. There is also a heated swimming pool at the North Mainland Leisure Centre. A 50 berth marina is planned for the head of Basta Voe.



## CRUISING WEST COAST

The cruise around Muckle Roe will reveal the beautiful small inlets of the Hams of Roe, particularly North Ham edged with huge red cliffs, stacks and a natural arch. A cruise up the west side will take you through St. Magnus Bay where the Atlantic Ocean has battered the land into a scene of astounding beauty. To the north, the Isle of Nibon is a noted beauty spot and Hamar Voe is one of Shetland's few natural year-round anchorages.

Hillswick and Ura Firth are open to the south but safe enough for overnight summer anchoring, to enjoy a meal and drinks at the The Booth, one of Shetland's oldest buildings - now a vegetarian cafe as well as supporting a seal rescue centre in the back garden (01806 503348).

The cliff coast from Hillswick Ness to Uyea Isle is sensational. The Drongs stacks and the Dore Holm lead on to the basalt cliffs of the Skerry of Stenness, where there is a huge, square cave. Spectacular blow holes, The Holes of Scrada, stretching 132 yards inland, were created when the roof of a deep and narrow sea cave collapsed.

Further north is the Grind o' da Navir (Gate of the Borer), where the sea has carved a huge, vertical sided geo or ravine into the cliffs.

North of Eshaness lighthouse is another Hamnavoe (meaning - the safe harbour). Ockran Head opens Shetland's longest sea loch, Ronas Voe, with an excellent anchorage at the head, overlooked by Shetland's highest hill, Ronas Hill (standing at 1477') which is home to around 15 varieties of arctic flowering plant. Also en-route, west of Ronas Hill are the huge red cliffs and the Lang Ayre, Shetland's longest beach.

Fethaland was once Shetland's busiest 'haaf' station, where traditional open rowing boats (sixareens) would return laden with fish after being out in the open sea (far haaf) for days on end. Sixty sixareens were based here and the ruins of twenty lodges still stand.

The gaunt Ramna Stacks, an RSPB bird reserve, mark the entrance to Yell Sound and the tanker lanes into Sullom Voe. Visiting yachts should call Sullom Voe Vessel Traffic System (VTS) on VHF Ch 14 before entering Yell Sound to ensure there is no conflicting traffic.

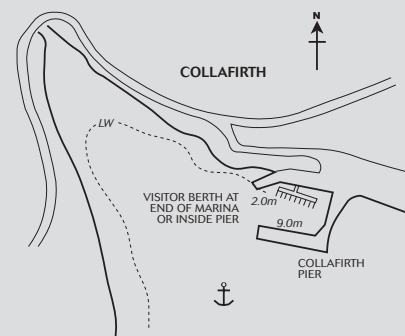


# COLLAFIRTH

60° 32'N 01° 20'W

	MARINA	PEIR
<b>Depth (low water):</b>	<b>2m</b>	<b>9m</b>
<b>Charges:</b>	<b>£5 per day</b>	<b>Please see - <a href="http://www.shetland.gov.uk/ports/tableofdues/scalloway.asp">www.shetland.gov.uk/ports/tableofdues/scalloway.asp</a></b>
<b>Contact:</b>	<b>David Laurenson, 01806 533288</b>	<b>John Peter Blance, 01806 544296</b>
<b>Yacht Facilities:</b>	<b>Fresh Water, waste disposal, slip</b>	
<b>Other Facilities:</b>	<b>Telephone, bus and taxi service</b>	

The marina and pier, situated at Saltoo in Collafirth was built in 1988 on the site of an old Norwegian whaling station where the fishing industry lives on. Electricity can be arranged at the marina and approach poses no problems at any state of the tide.



## CRUISING COLLAFIRTH

Yell Sound is good cruising water and has secluded bays on either shore at Southladie Voe, Burra Voe, Collafirth, Queyfirth, Ollaberry and Gluss Voe which will provide shelter, depending on wind direction. Yell Sound's north eastern shores are bleak and rocky, but Whalfirth (60°36.5N 1°37W) which has small pier at its head, is a very sheltered anchorage in any weather.

Sullom Voe has an anchorage at its head, on the north side of Brae, and in Garths Voe. It is a long sheltered sea loch noted for its wildlife, particularly otters, seals and sea ducks. Despite the huge oil terminal at its eastern end, handling some of the largest tankers in the world, Sullom Voe remains one of Shetland's most tranquil and unspoilt sea lochs.

At the time of writing a marina is planned at Toft, which is the ferry terminal for Yell.

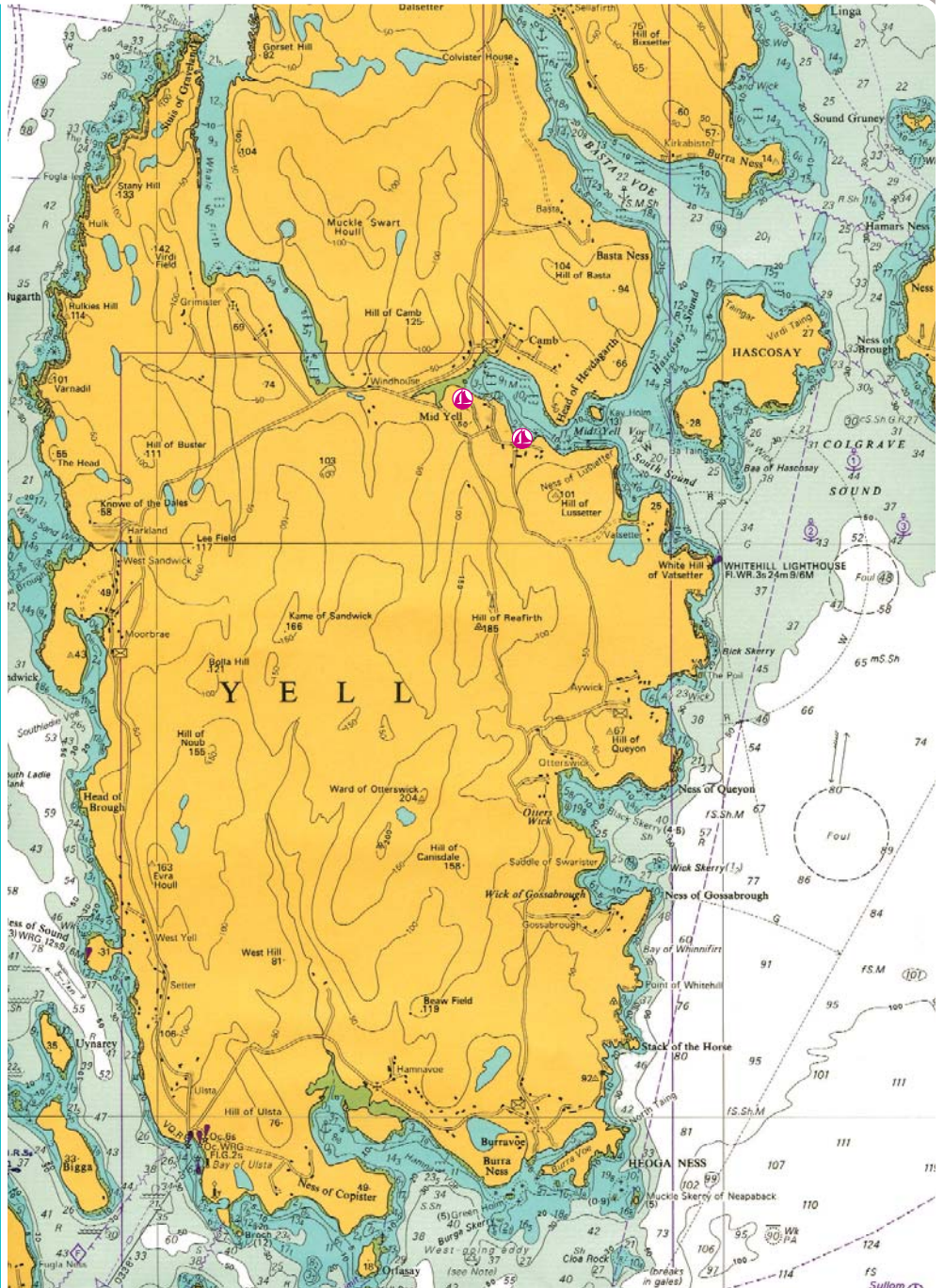
Lunna Ness has two anchorages, the landlocked Boatsroom Voe and West Lunna Voe, not quite so sheltered. Both have fish farm piers where visitors may lie by arrangement with the proprietors.



# Yell North Isles

**YELL IS THE LARGEST OF THE NORTHERN ISLES, AND DURING THE SUMMER ITS LONG AND VARIED COASTLINE IS ALIVE WITH BREEDING BIRDS SUCH AS WHIMBREL, GOLDEN PLOVER, DUNLIN, EIDER, ARCTIC SKUA, GREAT SKUA, RED BREASTED MERGANSER, RED THROATED DIVERS AND MERLIN, BRITAIN'S SMALLEST BIRD OF PREY. INLAND IS A LANDSCAPE OF BLANKET PEAT BOG DOTTED WITH CROFTING SETTLEMENTS. OTTERS ARE NUMEROUS AROUND THE SHORES.**

**AT THE WICK OF BRECKON IS ONE OF THE FINEST BEACHES IN SHETLAND, WHERE THE DUNES AND COASTAL PLAIN BEHIND IT HAVE A QUITE DIFFERENT FLORA FROM MOST OF YELL, AND SHIFTING SANDS COVER THE BURIALS, POTTERY AND RUINS OF VIKING AND EARLIER SETTLEMENTS. TIDE RACES SKIRT GLOUP HOLM AND THE NORTHERN END OF BLUEMULL SOUND.**



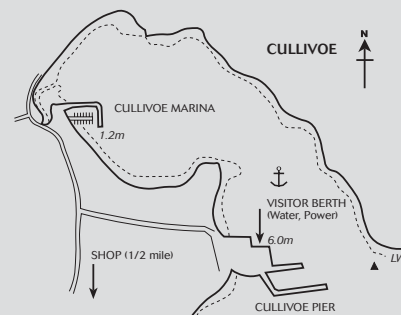


# CULLIVOE

60°42'N 00°59.7'W

	PIER	MARINA
<b>Depth (LW):</b>	<b>6.0m</b>	<b>1.2m</b>
<b>Contact:</b>	<b>Roger Moore, 01806 244200</b>	<b>Andrew Nisbet, 01957 7442672</b>
<b>Charges:</b>	<b>Please see - <a href="http://www.shetland.gov.uk/ports/tableofdues/scalloway.asp">www.shetland.gov.uk/ports/ tableofdues/scalloway.asp</a></b>	<b>£5 per day</b>
<b>Yacht Facilities:</b>	<b>Toilets, fuel, fresh water, waste and waste oil disposal, slip, repairs, chandlery, boat hoist (crane truck for hire), engineering services</b>	
<b>Other Facilities:</b>	<b>Telephone, post office, shop, bus service, car hire, taxi service</b>	

Cullivoe in North Yell lies on the western shore of Bluemull Sound. The harbour, built in 1991, remains the most active on the island and is accessible in all states of the tide, sheltering both a pier and a small boat marina. It makes a good base for exploring the rest of the island, especially with R.G. Jamieson and Son's taxi service based nearby (01957 744214), as well as one of the most helpful shopkeepers in Britain - R.S. Henderson, who also sells marine diesel (01957 744248). The Pier also becomes a party venue during the first weekend of July when 'Party at the Pier' is celebrated.



Blue Mull Sound, with its strong tides and turbulent races, can be hazardous in a northerly wind and there are many inshore rocks on the west coast of Unst, north of Cullivoe. Visiting craft should give this rock-bound coast a berth of at least 2 cables.



# MID YELL

60°36'N 01°03.4'W

	PIER	MARINA
<b>Depth:</b>	<b>1.5m max</b>	<b>2.0-3.5m</b>
<b>Contact:</b>	<b>Roger Moore, 01806 244200</b>	<b>Angus Petrie, 01957 7023 17</b>
<b>Charges:</b>	<b>Please see - <a href="http://www.shetland.gov.uk/ports/tableofdues/scalloway.asp">www.shetland.gov.uk/ports/ tableofdues/scalloway.asp</a></b>	<b>£5 per day</b>
<b>Yacht Facilities:</b>	<b>Electricity, waste reception, toilets, electricity, boating club (open 7.00pm - 1.00am Friday &amp; Saturday), diesel (auto)</b>	
<b>Other Facilities:</b>	<b>Leisure centre, swimming pool, bar, shop and post office, car hire, taxi service</b>	

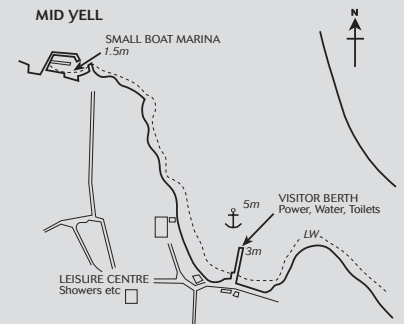
Mid Yell is in a deep voe, sheltered by the uninhabited island of Hascosay. It has a 90m pier and a small boat marina which has room for 1 larger or 2 smaller visiting boats. When entering, keep close to the breakwater but risk of damage is low as the bottom is sandy. You can usually find a berth at the pier but it is used round the clock by fish farms, so the marina or anchoring might be the better option.

Staff at the Linkshouse Shop and Post Office (1 mile away) are very helpful to visiting yachts - and stock an amazing range of goods, from mops and buckets to bacon rolls and home-grown Yell strawberries (01957 702026).

Mid Yell holds a fishing competition in the second week of August, a regatta in the first or second week in September and an agricultural show in East Yell in the first week of September.

Mid Yell is the best base for exploring the east coast of Yell and the neighbouring island of Fetlar, known for its snowy owls, phalaropes, puffin colonies and the seal nurseries of the Blue Banks. There are only daytime anchorages at Fetlar, at the Wick of Gruting and Wick of Tresta. There is a new ferry pier at Oddsta at the north end of the island.

Further south along the east coast at Otterswick is a figure head known as 'Da White Wife', which was salvaged from the 1924 wreck of the German training ship 'Bohus'.





# BURRAVOE

60°29.8'N 01°02.4'W

	PIER	MARINA
<b>Depth (LW)</b>	<b>2m</b>	<b>2m (LW)</b>
<b>Charges:</b>		<b>£5 per day</b>
<b>Contact:</b>	<b>Dan Thompson, 01957 722201</b>	<b>Robert Odie, 01957 722315</b>
<b>Yacht Facilities:</b>	<b>Toilets, electricity, fresh water, waste disposal, slip, fuel by arrangement</b>	
<b>Other Facilities:</b>	<b>Leisure centre, swimming pool, bar, shop</b>	

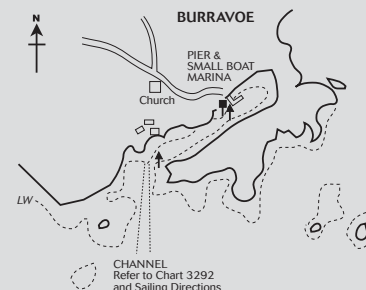
Burravoe is at the south eastern tip of Yell, and thanks to its excellent shelter, has been in use since the 1500s.

There are fine walks around Heoganess, the peninsula which shelters the harbour, which has been in use for over 500 years.

Care should be taken when approaching Burravoe, as there are dangerous rocks in the approach, and the entrance of the voe has a 2.5m bar. Once inside there are three mooring options; the pier, the marina, or anchor in the excellent holding ground at the head of the voe.

The Old Haa' museum and heritage centre has a fascinating exhibition, including for example the Bobby Tulloch photographic archives, and it serves a great cup of tea with home baking.

Ulsta (60°29.8N 1°09.4W) is the terminus for the Yell Ferry, and it has a pontoon with 2 berths, a shop and fuel is available close by.



# ULSTA

60°29.9N 1°09.4W

## MARINA

<b>Depth: (LW)</b>	<b>2.3m max</b>
<b>Contact:</b>	<b>SIC Ports and Harbours</b>
<b>Charges:</b>	<b>Please see - <a href="http://www.shetland.gov.uk/ports/tableofdues/scalloway.asp">www.shetland.gov.uk/ports/tableofdues/scalloway.asp</a></b>
<b>Other Facilities:</b>	<b>Post office, shop</b>

The small marina at Ulsta is an 'L' shaped pontoon system, one arm being 20 metres and the other 10 metres. It is predominantly used by small fishing boats but space should be available for cruising boats to tie up. It is situated inshore from the ferry terminal and not visible from boats travelling through Yell Sound. Because the marina is situated within the ferry terminal complex toilets are available onshore and a well stocked shop is at the head of the pontoon walkway.

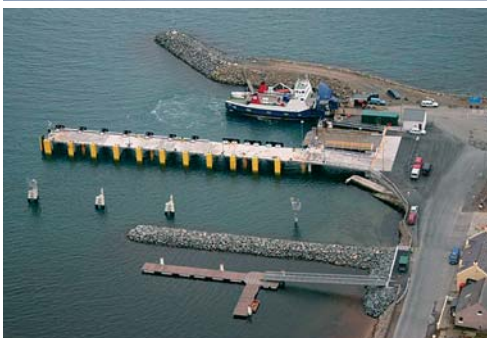
There are channel markers, visible from Yell Sound, that direct boats into the marina. However advice from a local fishing boat user suggested that deep draft vessels might have insufficient depth at low water once they have passed through the markers.

There is no water or power on the pontoons.

## APPROACHES

The approach to Ulsta is clearly charted and a navigation light on the mole arm guides navigators towards the ferry terminal entrance. Once within the mole the port and starboard markers placed on two substantial supports mark the approved channel into the marina.

Care should be taken by visiting craft to allow arriving and departing ferries unhindered navigation.



Above & Left: Ulsta Pontoon

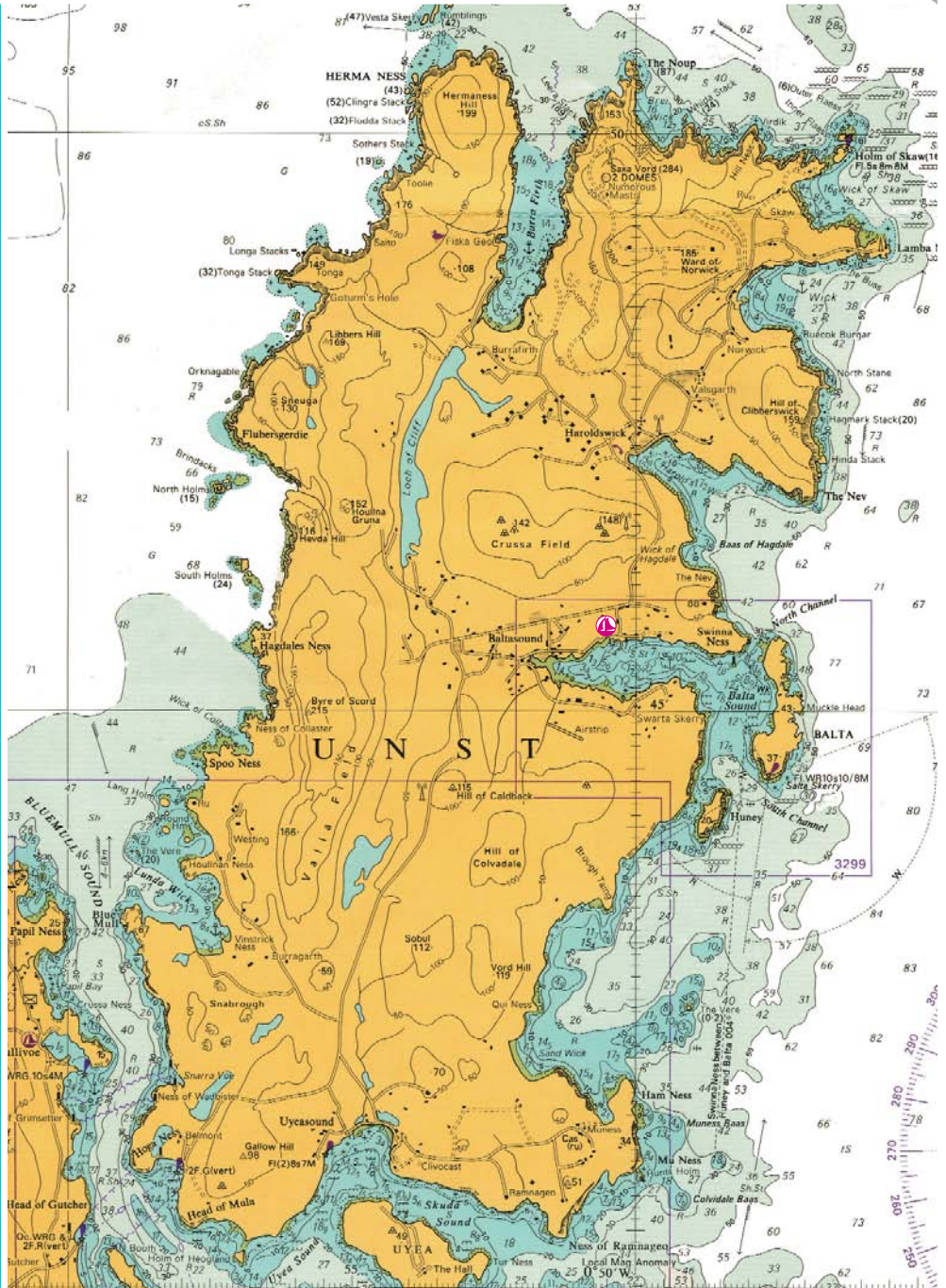






# Unst North Isles

**UNST, BRITAIN'S MOST NORTHERLY INHABITED ISLAND, HAS ROCKY SEA STACKS, SHELTERED INLETS, GOLDEN BEACHES AND MAGNIFICENT CLIFFS. IT IS A MAJOR BREEDING SITE FOR SEABIRDS INCLUDING GANNETS, PUFFINS, GUILLEMOTS, RAZORBILLS, KITTIWAKES, SHAGS AND THE GREAT SKUA, AS WELL AS BEING PRIME SEAL, PORPOISE, WHALE AND (IF YOU ARE LUCKY) OTTER WATCHING COUNTRY. IT IS A PRODUCTIVE COMMUNITY MAKING REAL ALE, HANDMADE CHOCOLATES, KNITWEAR AND POTTERY, AND THERE IS A MONTHLY FARMERS MARKET IN BALTASOUND HALL.**





# BALTASOUND

60°45.5'N 00°50.2'W

	PIER	MARINA
<b>Depth (low water):</b>	<b>5m</b>	<b>1.5m</b>
<b>Contact:</b>	<b>Roger Moore, 01806 244200</b>	<b>Penny Thompson, 01957 711 444</b>
<b>Charges:</b>	<b>Please see - <a href="http://www.shetland.gov.uk/ports/tableofdues/scalloway.asp">www.shetland.gov.uk/ports/tableofdues/scalloway.asp</a></b>	<b>£5 per day</b>
<b>Yacht Facilities:</b>	<b>Shower, toilet, water, fuel, boat yard, engineering services, boating club, waste disposal, slip</b>	
<b>Other Facilities:</b>	<b>Shop, pub, leisure centre (2 miles), swimming pool, taxi service, accommodation, telephone</b>	

Baltasound is a large and well-serviced harbour sheltered by the Isle of Balta at the mouth of the sound and by the high ground to the north and west. While the small boat marina is not suitable for visiting yachts a pontoon berth situated west of the main pier is accessible at all states of the tide. Alternatively, there is a good anchorage south west of the pier.

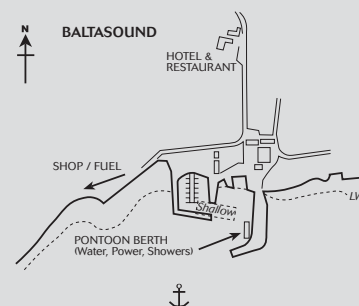
During the summer the harbour is host to various events including a regatta and fishing competitions as well as music evenings in the hall.

#### LOCAL SERVICES:

- **Toilets and shower key, and fuel, from Alex Sandison & Sons Ltd (01957 711444).**
- **General merchants: Skibhoul Stores and Post Office, 1 mile (01957 711304). H Henderson, 1 1/2 miles (01957 711411).**
- **Taxi services: A&W McLeod and P&T Coaches (01957 711666) who also run a bus service and car hire.**
- **Repairs: Unst Inshore Services (01957 711881).**

On the north east coast of Unst, Wick of Skaw, Norwick and Haroldswick offer temporary shelter. Haroldswick is home to the Unst Boat Haven, Shetland's only museum dedicated to the history of the island's distinctive wooden boats and the line-fishermen who used them until the early 20th century. Also well worth a visit is the fascinating Unst Heritage Centre, where the permanent displays include geology, genealogy and the island's famous fine lace knitting and spinning. Both centres are open daily, 2.00pm - 5.00pm, May to September.

Next door, the Haroldswick shop has a do-it-yourself café, and around the corner you can have your postcards franked at Britain's most northerly post office. On the eastern side of the village, Britain's only working talc mine is at Clibberswick, known also for its Viking soapstone quarry.



#### CRUISING NORTH & EAST

Rounding Muness, on the south-eastern corner of Unst, Skuda Sound leads to the exposed anchorage of Uyeasound, where there is a small dock (only accessible at high tide), toilets, telephone and a youth hostel.

Shetland's second Uyea Isle has a ruined mansion house and is a paradise for nesting birds, as are the nearby holms of Haaf Gruney, Sound Gruney, Urie Lingey and Wedder Holm. Basta Voe, a former naval anchorage, and Hacksaw (where there is a day anchorage on the west side) are good places to see otters at dawn and dusk; food and drink are available at the nearby North Isles Motel. Recent excavations have uncovered an Iron Age settlement at the Tats of Bayanne, by Sellafirth.

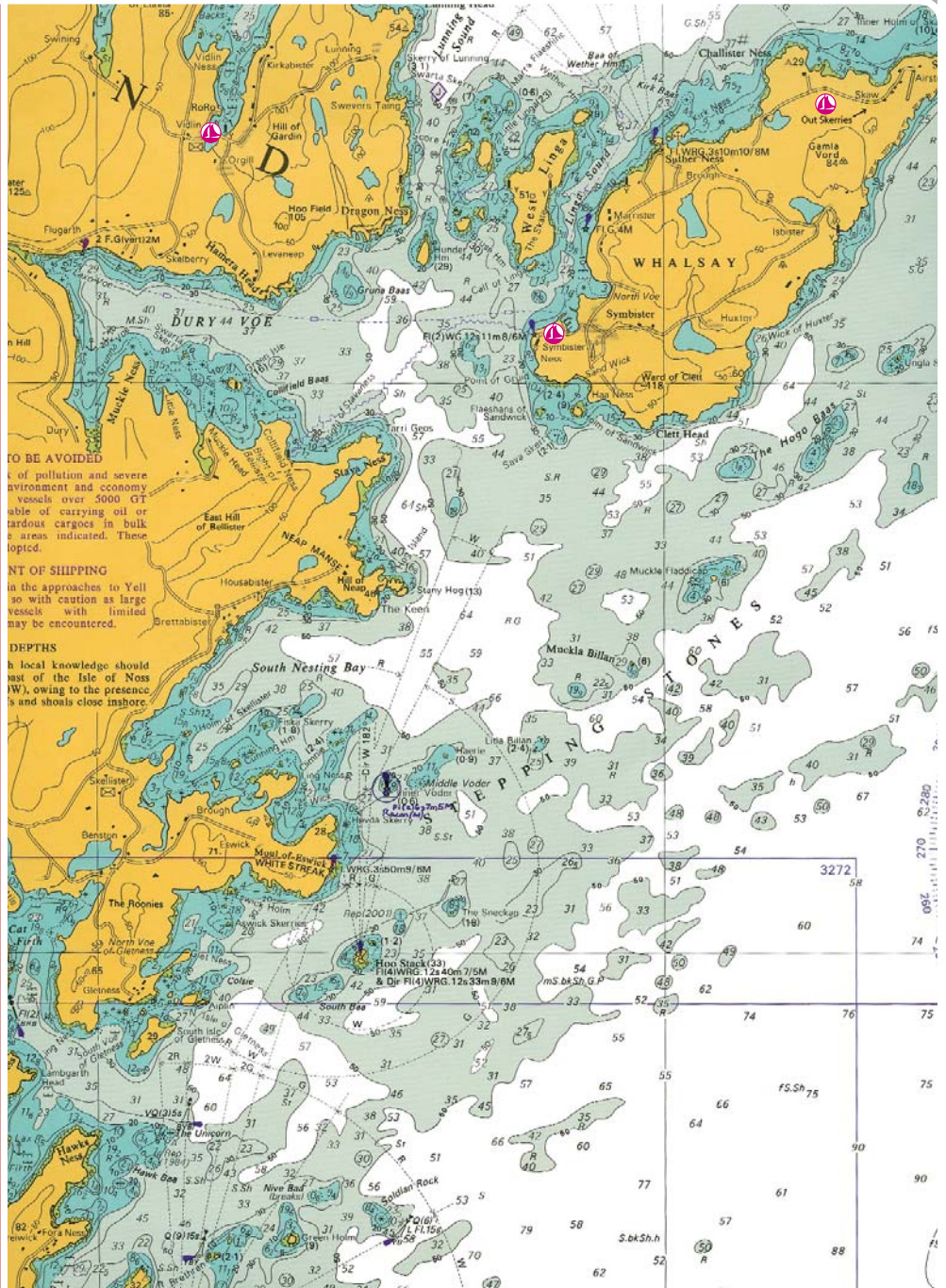
The west coast of Unst has only one possible anchorage in settled weather, at Lunda Wick. The remainder of the coast from Bluemull Sound to Muckle Flugga is cliffbound, but with deep water and no unmarked hazards if an offing of at least 2 cables is maintained.

Hermaness Natural Nature Reserve, on the north west promontory of North Unst, is one of the wonders of the bird world. The gannetry extends onto the Muckle Flugga stacks. Beyond is the Out Stack, the full stop at the end of Britain. Extraordinary caves and natural arches buttress the eastern shore of Burrafirth, a spectacular anchorage but unsafe in northerly winds. The SNH Visitor Centre, based in the lighthouse shore station at Burrafirth, provides a great opportunity to learn more about the Hermaness NNR (01957 711278).





# East Mainland



**THE FINAL LEG OF A SHETLAND CIRCUMNAVIGATION TAKES YOU DOWN THE EAST SIDE OF THE ISLANDS BACK TO LERWICK. THIS PORTION OF THE COAST OFFERS MARKED CONTRASTS; FROM THE BOLD HEADLANDS AND OFFLYING ISLETS TO THE WONDERFUL HILLY PENINSULAS OF NORTH AND SOUTH NESTING AND THE SPECTACULAR STEEP SIDED INLET OF DALES VOE.**





# OUT SKERRIES

60°25'N 00°45'W

	MARINA	PIER
<b>Depth (LW):</b>	<b>3m</b>	<b>3m</b>
<b>Contact:</b>	<b>Denise Anderson, 01806 515272</b>	<b>Roger Moore, 01806 244200</b>
<b>Charge:</b>	<b>£5 per day</b>	<b>Please see - <a href="http://www.shetland.gov.uk/ports/tableofdues/scalloway.asp">www.shetland.gov.uk/ports/ tableofdues/scalloway.asp</a></b>
<b>Yacht Facilities:</b>	<b>Toilets, showers, fuel by arrangement, fresh water, waste disposal, slip, electricity</b>	
<b>Other Facilities:</b>	<b>Telephone, disabled facilities, post office, shops</b>	

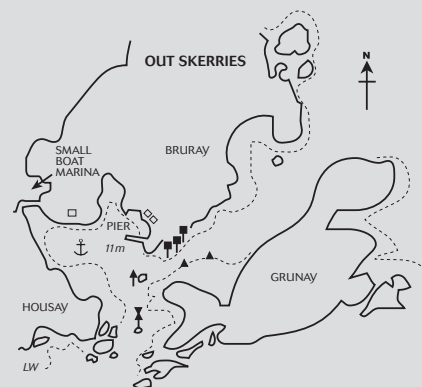
Out Skerries is around 9 miles east of Shetland and makes a perfect starting point for the 164 nautical mile onward voyage to Norway. The passage to Out Skerries by yacht also provides an ideal opportunity for spotting minke whale and harbour porpoise off the dramatic coastline of cliffs, arches, blow holes, stacks, voes and beaches.

Out Skerries has a small boat marina, pier and a fine anchorage in the natural harbour of Böd Voe. If you wish to tie up, visiting yachts should do so at the pier in the first instance.

The dramatic scenery, historical interest, outstanding wildlife and, not least, the warm welcome from the 70 inhabitants make a visit to this mini-archipelago unforgettable. Skerries is Shetland in miniature - famous for migrating birds and for 17th century treasure, such as the wrecks of two Dutch East Indiamen.

There are two shops on the isles, the West Isle Shop (01806 515297), and Alex Humphray & Co. (01806 515226).

For a real flavour of Skerries life, make your visit coincide with the annual eela (rod-fishing) competition in July or the yacht race in August, which also feature music, dancing, eating and drinking at the hall, where you will be made more than welcome. Contact VisitShetland for more information.

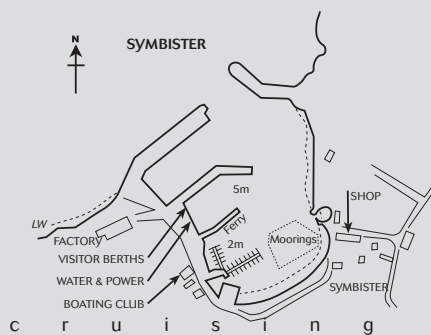


# WHALSAY

60°20.6'N 01°01.6'W

<b>Depth:</b>	<b>Inner Basin 5m. Outer Basin 7m</b>
<b>Contact:</b>	<b>Bobby Sutherland, 01806 566382</b>
<b>Charge</b>	<b>£5 per day</b>
<b>Yacht Facilities:</b>	<b>Toilets, showers, fuel, electricity, fresh water, waste and waste oil disposal, repairs and chandlery, engineering services, boating club</b>
<b>Other Facilities:</b>	<b>Telephone, post office, shop, accommodation, leisure centre, swimming pool, restaurant, pub/bar, taxi service</b>

In Whalsay, Symbister is a handy stopover for





# VIDLIN

60°22.3'N 01°07.7'W

**Depth (LW):** 1.7m max

**Charge:** £5 per day

**Contact:** Johnny Johnson, 01806 577326

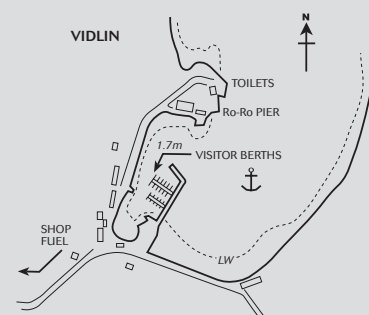
**Yacht Facilities:** Toilets, electricity, fresh water, waste disposal, launching slip

**Other Facilities:** Telephone, shop and post office

Vidlin marina provides good shelter from southerly winds and is accessible at all states of the tide. It sits at the centre of the village at the head of Vidlin Voe.

There is a well stocked shop (J.I. Herculson, 01806 577285) situated at the cross roads, and the toilets are situated at the Out Skerries ferry terminus 200 yds along the west shore.

Nearby Lunna House is rich in history. It was the headquarters of the Norwegian resistance movement during the 2nd World War. It looks down on the old Kirk of Lunna, one of the oldest churches in Shetland.



## CRUISING SOUTH

South Nesting Bay leads into the perfect little anchorage of the Dock of Lingness, where yachts drawing less than 2m. can ride out any summer storm.

The beautiful Isles of Gletness guard the entrance to Catfirth, where the anchorage was used by flying boats in the 1st World War. The derelict foundations of the base are scheduled to become part of Shetland's first distillery.

## COASTGUARD

In the event that breakdown, illness and injury occur, Her Majesty's Coastguard (HMCG) respond to all incidents on the coasts or at sea free of charge. They are also responsible for broadcasting Maritime Safety Information (MSI) using VHF, MF and NAVTEX and also the provision of a Radio Medical Link Call service (MEDILINK) in UK waters. Shetland Coastguard covers both Shetland and Orkney waters.

Should any member of a crew require medical advice or assistance the Master or Skipper should contact Maritime Rescue Sub Centre (MRSC) Shetland using VHF or MF DSC, VHF Ch 16 (156.8MHz) or MF (2182kHz). In an emergency situation, an urgency alert using the prefix word PAN PAN should be made. The vessel will then be linked using the most suitable VHF channel or MF frequency to a doctor by the MRSC, and SAR units would be brought to immediate readiness.

Shetland has two Severn Class RNLi all weather lifeboats: the "Charles Lidbury" based at Aith on the west and the "Michael & Jane Vernon" at Lerwick on the east of Shetland. As well as a rescue helicopter based at Sumburgh, on the south of the mainland, there are 33 teams of trained Volunteer Coastguards strategically placed throughout the islands. All RCC's have access to a translation service and are fitted with the latest communication equipment.

Requests for weather forecasts, general information or passing passage planning information can be made directly to MRSC Shetland 24 hours a day either by telephone on 01595 692976, VHF/MF radio telephony, or Digital Selective Calling (DSC) using MRSC Shetlands MMSI, 002320001. Gale warnings, strong wind warnings, local navigation warnings, local inshore forecasts, extended weather outlook, navigation warnings and Sullom Voe traffic broadcasts are made at 0105 UTC and every 4 hours subsequently.

**Lerwick Coastguard**  
Tel: 01595 692976

## DOCTORS

**Levenwick**  
surgery@levenwick.shetland.scot.nhs.uk  
Tel: 01950 422240

**Unst**  
healthcentre@unst.shetland.scot.nhs.uk  
Tel: 01957 711318

**Whalsay**  
healthcentre@whalsay.shetland.scot.nhs.uk  
Tel: 01806 566219

**Bixter**  
healthcentre@bixter.shetland.scot.nhs.uk  
Tel: 01595 810202

**Scalloway**  
doctors@scalloway.shetland.scot.nhs.uk  
Tel: 01595 880219

**Lerwick**  
lerwick.doctors@lerwick.shetland.scot.nhs.uk  
Tel: 01595 693201

**Walls**  
walls.surgery@walls.shetland.scot.nhs.uk  
Tel: 01595 809352

**Yell**  
surgery@yell.shetland.scot.nhs.uk  
Tel: 01957 702127

**Brae**  
brae.medicalcentre@brae.shetland.scot.nhs.uk  
Tel: 01806 522543

Hillswickhealthcentre@hillswick.shetland.scot.nhs.uk  
Tel: 01806 503277



**EMERGENCY SERVICES:  
IN AN EMERGENCY  
DIAL 999.**



## DENTISTS

Bells Brae Dental Clinic,  
Gilbertson Road, Lerwick  
Tel: 01595 693204

Alan Owen, Dental Surgery,  
90 St. Olaf Steet, Lerwick  
Tel: 01595 695769

### North Isles Dental Service:

Yell Dental Clinic,  
Mid Yell, Yell  
Tel: 01957 702031

Unst Dental Clinic,  
Haroldswick, Unst  
Tel: 01957 711255

## POLICE

**Lerwick**  
Tel: 01595 692110

**Baltasound**  
Tel: 01957 711424

**Brae**  
Tel: 01806 522381

**Dunrossness**  
Tel: 01950 460707

**Scalloway**  
Tel: 01595 880222

**Symbister**  
Tel: 01806 566432

**Yell**  
Tel: 01957 702012

## ROYAL NATIONAL LIFEBOAT INSTITUTION (RNLI)

Aith Lifeboat  
Tel: 01595 810276

Lerwick Lifeboat  
Tel: 01595 693827

## INTERNATIONAL SERVICES (CONSULS)

**Denmark**  
Lindsay Aitken  
Tel: 01595 692533

**Iceland**  
Lindsay Aitken  
Tel: 01595 692533

**Finland**  
John Smith  
Tel: 01595 692556

**France**  
Bill Stubbings  
Tel: 01595 692556

**Germany**  
John Smith  
Tel: 01595 692556

**Norway**  
John Smith  
Tel: 01595 692556

**Sweden**  
Iain Tulloch  
Tel: 01595 692533

## HM CUSTOMS & EXCISE

### EC Arrivals and Departures:

If arriving from, or sailing to, other EC ports there is no requirement to report in or out.

### Non EC Arrivals and Departures:

If arriving directly from, or sailing directly to a non EC country there is a requirement to report, or clear as appropriate. Form C1331 (Pleasure Craft on Non EC Voyages) must be completed upon departure from the UK and can be obtained from Lerwick Port Authority.

Completed forms should be returned to Lerwick Port Authority.

National Advice Service  
Tel: 0845 0109000

Aberdeen Office  
Tel: 01224 844632

### Bond Shipments:

HM Customs and Excise must approve entitlement and quantities before duty-free stores can be supplied to your vessel. Yachts and other private craft of less than 40 tons who register departing on a voyage to a port outside Home Trade Limits (between the north bank of the River Eider and the Port of Brest inclusive) are entitled to carry duty-free stores. The quantity of duty-free stores you can apply for depends on: the number of crew/passengers on board, the expected length of the voyage, the amount of surplus stores still on board. (View notice 69A at [www.hmce.gov.uk](http://www.hmce.gov.uk) for more details).

## HM IMMIGRATION

The Immigration Act requires that any national from a non EEA country arriving at a UK port must present themselves to an Immigration Officer. On arrival in Shetland all non EEA nationals must contact the local Immigration Officer on Mobile No: 07721 466199.

## SUPPLIES

### Bonded Stores (Duty Free supplies)

Zetland Bonded Services, 12 Thorfinn Street, Lerwick  
Tel: 01595 693537

## COOKING GAS

Calor Propane Gas supplied by:  
Rearo Gas Supplies, Stoney Hill, Lerwick  
Tel: 01595 692807

(They can only refill Calor Propane Gas bottles which can be identified. The bottles must show the manufacturer's name, size of bottle and the test date must be clearly visible. Camping Gas Bottles and re-fills are available as well as Calor Gas Butane and Propane).

## CHANDLERS

Globus (Shetland) Ltd.  
8 Lower Blackhill, Lerwick  
Tel: 01595 696222

LHD Marine Supplies Ltd.  
1 Alexandra Bldgs, Lerwick  
Tel: 01595 692882

Thulecraft Ltd.  
6 Commercial Road, Lerwick  
Tel: 01595 693192

H. Williamson & Sons Ltd.  
Main Street, Scalloway  
Tel: 01595 880645

Garthspool Autos  
12 North Road, Lerwick  
Tel: 01595 692955

Malakoff Ltd.  
North Ness, Lerwick  
Tel: 01595 695544/693731

Williamson & Sons  
Main Street, Scalloway  
Tel: 01595 880645

DH Marine  
01595 690618  
Sited opposite the Lerwick Co-op

JLB Surveys  
Brakkabrent, Sandwick  
Tel: 01950 431323/07801940535

Shetland Mac Shop  
6 Mounthooly Street, Lerwick  
Tel: 01595 690994

## WHOLESALEERS

Tods of Lerwick  
25 Gremista Ind. Est. Lerwick  
Tel: 01595 693850

J.W Gray & Co.  
25 Gremista Ind. Est. Lerwick  
Tel: 01595 693749

Hughson Brothers Gremista Ind.  
Est. Lerwick  
Tel: 01595 693150

## SUPERMARKETS

Co-op, Holmsgarth Road, Lerwick  
Tel: 01595 693419

Somerfield, South Road, Lerwick  
Tel: 01595 692426

## CHART AGENTS

LHD Marine Supplies Ltd.  
1 Alexandra Bldgs, Lerwick, ZE1 0LL  
Tel: 01595 693768

## OTHER PUBLICATIONS

The Clyde Cruising Club:  
Shetland Islands. (ISBN 1-899786-85-6)  
CCC: 0141 221 2774. [www.clyde.org](http://www.clyde.org)

Adlard Coles Ltd:  
Reeds Almanac (ISBN 9780713673487)

## REPAIRS

A. Adamson 7 Co.  
22 Commercial Road, Lerwick, ZE1 0LX  
Tel: 01595 696656

C & R Diving Ltd.  
Sella Ness Ind. Est. Graven, Mossbank, ZE2 9QR  
Tel: 01806 242755

H.N.P Engineers (Lerwick) Ltd.  
Commercial Road, Lerwick ZE1 0NJ  
Tel: 01595 692493

Ian Irvin Engineering Strath Haven,  
Symbister, Whalsay, ZE2 9AG  
Tel: 01806 566627

J.L.B Surveys,  
Bakkabrent, Sandwick, ZE2 9HP  
Tel: 01950 431323

Malakoff Ltd.  
North Ness Lerwick, ZE1 0LZ  
or: Moores Yard, Westshore, Scalloway, ZE1 0JX  
Tel: 01595 695544

Marine Autos,  
Hillside, Gulberwick, ZE2 9JX  
Tel: 01595 697455

MSM Diving,  
Houbans, Sullom, ZE2 9RD  
Tel: 01806 522573

Oceans Kinetics Ltd.  
Marina Bus. Park, Gremista, Lerwick, ZE1 0TA  
Tel: 01595 696707

Shetland Composites (Repair Fibre Glass Hulls),  
SBS Base, Lerwick, ZE1 0PY  
Tel: 01595 696426

Thule Craft Ltd. Spares Dept. & Workshop,  
Gremista, Lerwick  
Tel: 01595 692500

Underwater Inspection Services Ltd.  
Sheencrest, Cunningsburgh, ZE2 9HB  
Tel: 01950 477457

Unst Inshore Services Ltd.  
Hagdale Ind. Est. Baltasound, Unst, ZE2 9TW  
Tel: 01957 711881

Zetland Marina Services Old Weighbridge,  
Esplanade, Lerwick ZE1 0LL  
Tel: 01595 693164

## TIDAL AND WEATHER INFORMATION

### Tidal Information

For tidal information contact Shetland Coastguard on 01595 692976, or visit: [www.tides.info](http://www.tides.info).

### Weather & Shipping Forecasts

Shetland Coastguard broadcast weather on VHF and MF Radio telegraphy at 0105 UTC and every 4 hours subsequently, alternatively contact Shetland Coastguard on 01595 692976.

### The Met Office:

Weather Call - 09014 722076 or [www.metoffice.com](http://www.metoffice.com)

Weather bulletins for shipping are broadcast daily on BBC Radio 4 at the following times: 0048 and 0535 (long wave and FM) 1200 and 1755 (normally long wave only). The following are broadcast: Gale warnings, general synopsis, sea area forecasts and coastal station reports.

**Northern Isles Weather Forecast**, recorded in Fair Isle can be viewed at [www.northisles-weather.co.uk](http://www.northisles-weather.co.uk).

**Faeroese Weather Service:** [www.theyr.net](http://www.theyr.net).

**ECMWF 3-6 day synoptic chart prediction** [www.ecmwf.int/products/forecasts/d/charts/medium/deterministic/msl uv850 z500](http://www.ecmwf.int/products/forecasts/d/charts/medium/deterministic/msl uv850 z500)

**Local forecast on Radio Shetland (92.7FM)** between 5.30 and 6pm local time weekdays only



Local Time	Content	Means
0110	Gale warnings Strong wind warnings Local inshore forecast	Working Channels MF 1770 (Collafirth) only if there are Gale Warnings in force
0410	Gale warnings Strong wind warnings Local inshore forecast	Working Channels
0710	Gale warnings Strong wind warnings Local inshore forecast Shipping forecast 3DAY Forecast	Working Channels MF 1770 (Collafirth)
1010	Gale warnings Strong wind warnings Local inshore forecast	Working Channels
1310	Gale warnings Strong wind warnings Local inshore forecast	Working Channels MF 1770 (Collafirth) only if there are Gale Warnings in force
1610	Gale warnings Strong wind warnings Local inshore forecast	Working Channels
1910	Gale warnings Strong wind warnings Local inshore forecast Shipping forecast 3DAY Forecast	Working Channels MF 1770 (Collafirth)
2210	Gale warnings Strong wind warnings Local inshore forecast	Working Channels

## SHETLAND MCA BROADCAST WORKING CHANNELS TRAVEL

Shetland Islands Council has timetable information for ferries, buses and air services which can be viewed at [www.shetland.gov.uk/transport/](http://www.shetland.gov.uk/transport/)

The main airport on the islands is in the south at Sumburgh  
[www.hial.co.uk/sumburgh-airport](http://www.hial.co.uk/sumburgh-airport)

### Travelling by Air

British Airways fly from Sumburgh to Kirkwall, Aberdeen, Edinburgh, Glasgow, and Wick (subject to seasonal variations)  
[www.britishairways.com](http://www.britishairways.com)  
British Airways, Wilsness Terminal, Sumburgh Airport, ZE3 9JP  
Tel: 01950 460345

Loganair Ltd. fly from Tingwall to Fair Isle, Foula, Out Skerries, Papa Stour, and Whalsay  
[www.loganair.co.uk](http://www.loganair.co.uk)  
Loganair Ltd., Tingwall Airport, Gott, ZE2 9XG  
Tel: 01595 840246.

### Travelling by Sea

NorthLink Orkney & Shetland Ferries Ltd. operate ferries to and from Orkney and Aberdeen from Holmsgarth Terminal, Lerwick, for reservations call: 0845 6000449 or visit: [www.northlinkferries.co.uk](http://www.northlinkferries.co.uk)

Need advice about sailing to or around Shetland?  
Contact our Cruising Panel on [sailinginfo@visitshetland.com](mailto:sailinginfo@visitshetland.com)

## CHARTS

Extracts from Admiralty Charts in this publication are reproduced as follows:

© Crown Copyright and/or Database Right.  
Reproduced by permission of the Controller of Her Majesty's Stationary Office and the UK Hydrographic Office ([www.ukho.gov.uk](http://www.ukho.gov.uk))

## YACHT CRUISING CONSULTANT

Mike Balmforth

## HARBOUR PLANS

Shetland Islands Council & Mike Balmforth

## PHOTOGRAPHY

VisitShetland, Shetland Islands Council, Didier Piquer, Charles Tait, Mike Balmforth.

## DESIGN

Wright Design ([www.wrightdesign.co.uk](http://www.wrightdesign.co.uk))





The Original 'Seaborn's' Pilot to Scottish Waters

# CLYDE CRUISING CLUB Sailing Directions and Anchorages

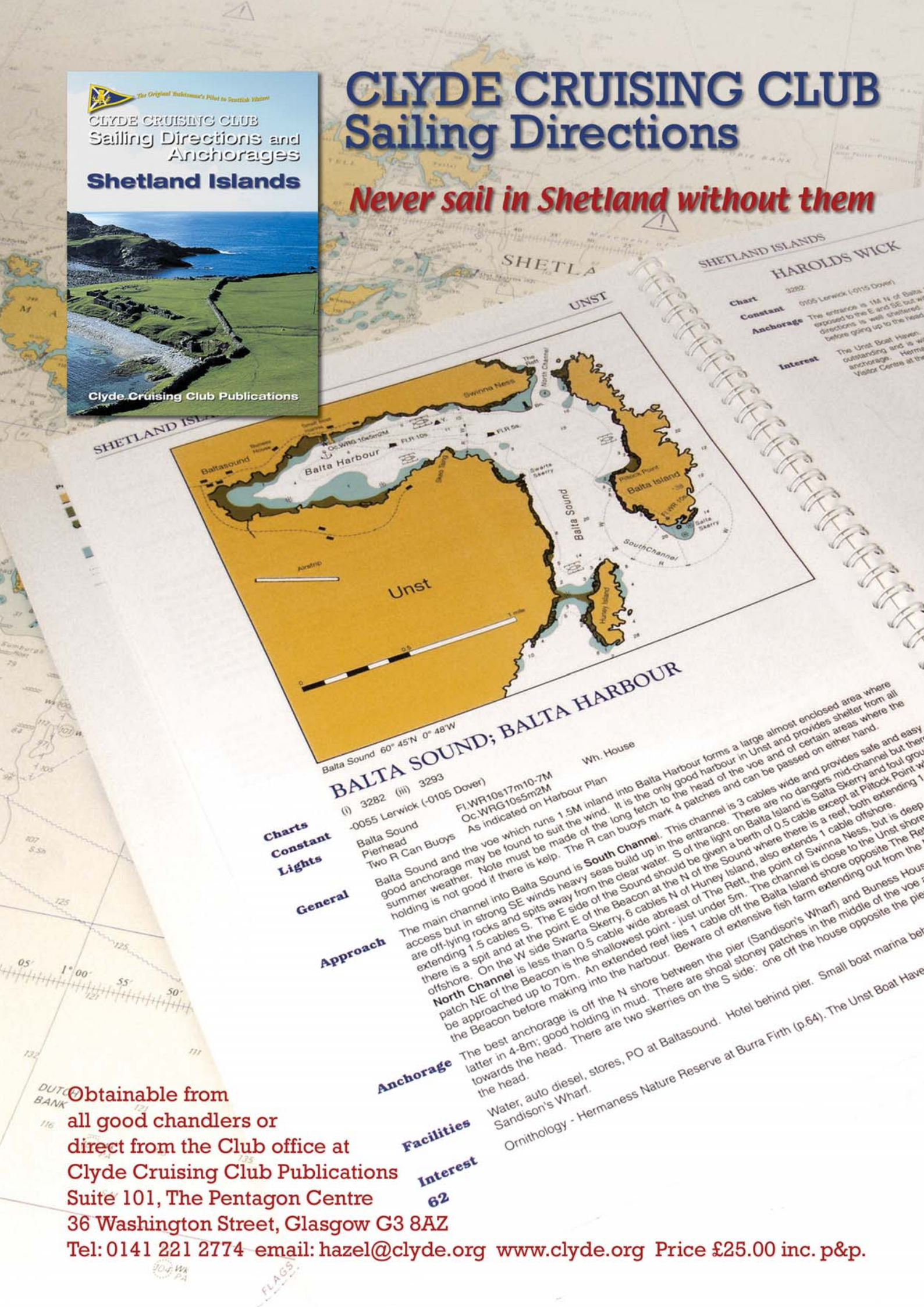
## Shetland Islands



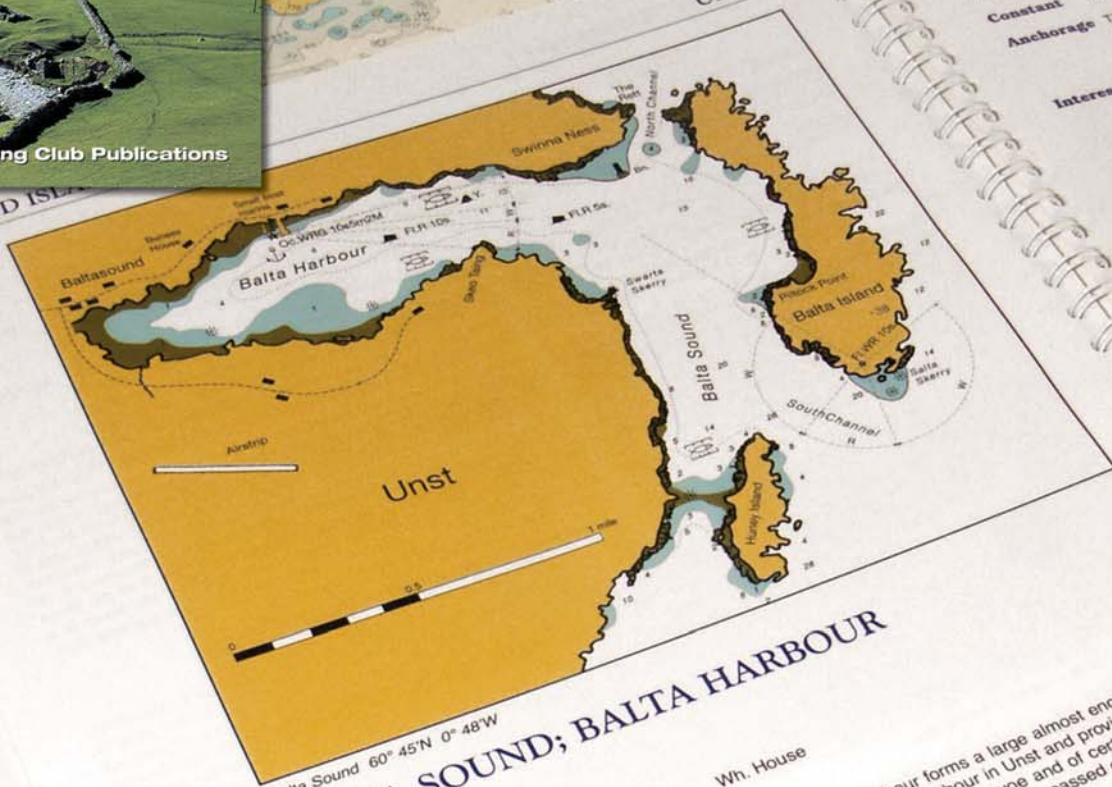
Clyde Cruising Club Publications

# CLYDE CRUISING CLUB Sailing Directions

### Never sail in Shetland without them



SHE TLAND ISLANDS	
HAROLDS WICK	
Chart	3282
Constant	0105 Lerwick (-0105 Dover)
Anchorage	The entrance is 1/4 M to the E and SE but is exposed to the E and SE but directions is well sheltered before going up to the head.
Interest	The Unst Boat Haven, outstanding and is well anchored. Herma Visitor Centre at the



## BALTA SOUND; BALTA HARBOUR

- Charts**
- Constant**
- Lights**

### General

### Approach

### Anchorage

### Facilities

### Interest

(i) 3282 (iii) 3293  
 -0055 Lerwick (-0105 Dover)  
 Balta Sound  
 Pierhead  
 Two R Can Buoys  
 Balta Sound and the voe which runs 1.5M inland into Balta Harbour forms a large almost enclosed area where good anchorage may be found to suit the wind. It is the only good harbour in Unst and provides shelter from all summer weather. Note must be made of the long fetch to the head of the voe and of certain areas where the holding is not good if there is kelp. The R can buoys mark 4 patches and can be passed on either hand.

The main channel into Balta Sound is **South Channel**. This channel is 3 cables wide and provides safe and easy access but in strong SE winds heavy seas build up in the entrance. There are no dangers mid-channel but there are off-lying rocks and spits away from the clear water. S of the light on Balta Island is Salta Skerry and foul ground extending 1.5 cables S. The E side of the Beacon at the N of the Sound where there is a reef, both extending 1 offshore. On the W side Swartta Skerry, 6 cables N of Huney Island, also extends 1 cable offshore. **North Channel** is less than 0.5 cable wide abreast of The Rett, the point of Swinna Ness, but is deep patch NE of the Beacon is the shallowest point - just under 5m. The channel is close to the Unst shore and be approached up to 70m. An extended reef lies 1 cable off the Balta Island shore opposite The Rett. Beware of extensive fish farm extending out from the Beacon before making into the harbour.

The best anchorage is off the N shore between the pier (Sandison's Wharf) and Bunness House latter in 4-8m; good holding in mud. There are shoal stoney patches in the middle of the voe towards the head. There are two skerries on the S side: one off the house opposite the pier.

Water, auto diesel, stores, PO at Baltasound. Hotel behind pier. Small boat marina behind Sandison's Wharf.

Ornithology - Hermaness Nature Reserve at Burra Firth (p.64). The Unst Boat Haven

Obtainable from  
 all good chandlers or  
 direct from the Club office at  
 Clyde Cruising Club Publications  
 Suite 101, The Pentagon Centre  
 36 Washington Street, Glasgow G3 8AZ  
 Tel: 0141 221 2774 - email: hazel@clyde.org www.clyde.org Price £25.00 inc. p&p.

**VISIT**  
**Shetland**

VisitShetland, Market Cross  
Lerwick, Shetland ZE1 0LU  
T + 44 (0) 8701 999 440  
F + 44 (0) 1595 695 807  
[www.visitshetland.com](http://www.visitshetland.com)

