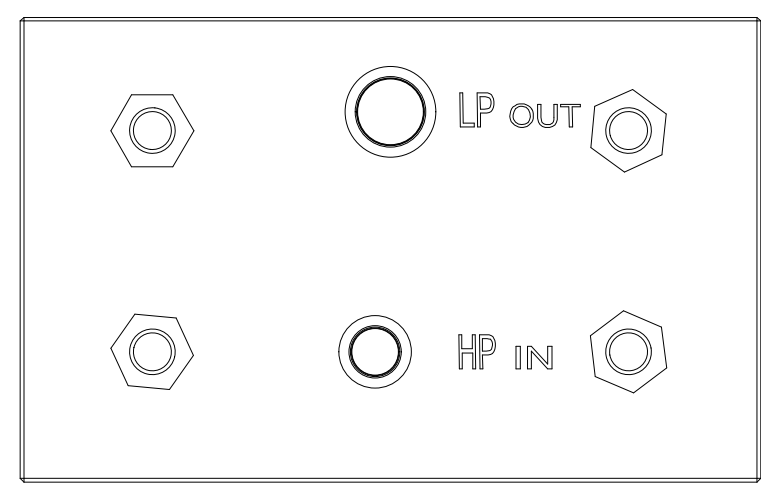
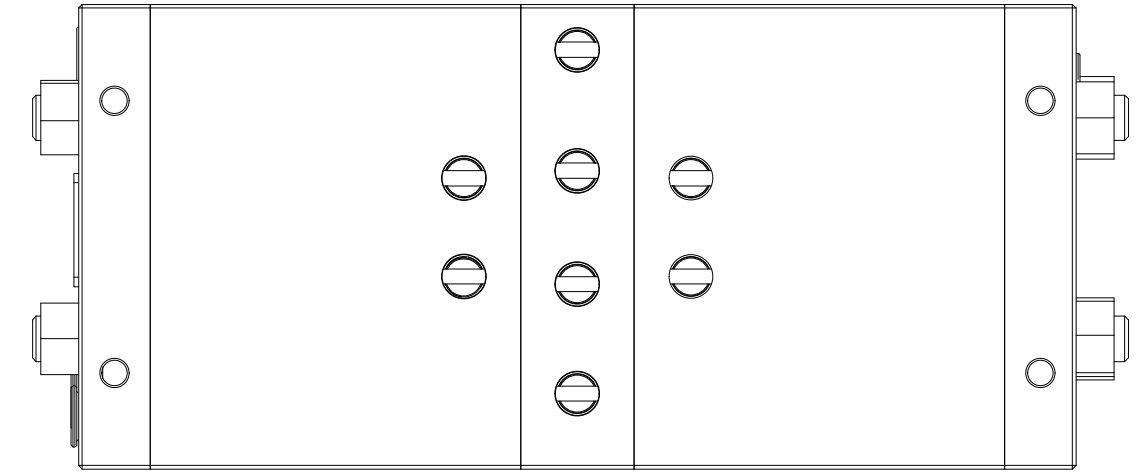
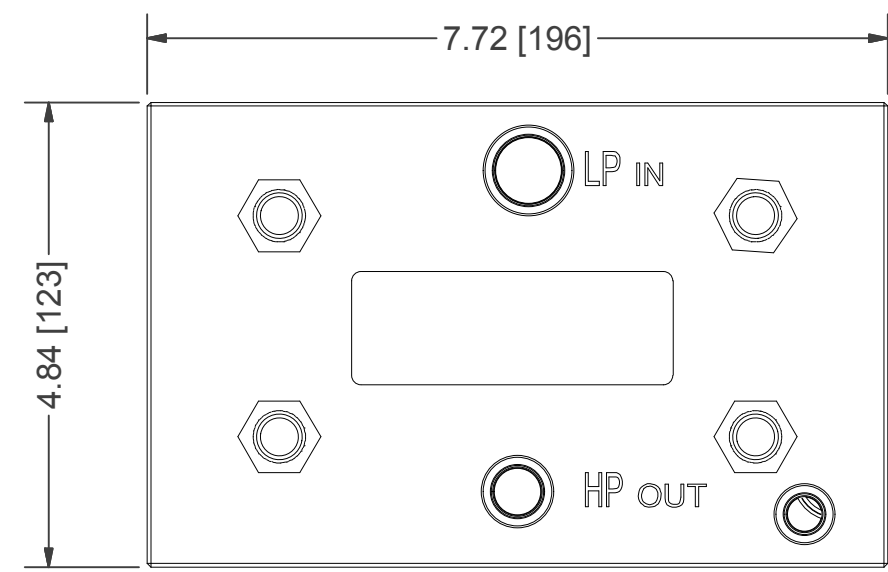
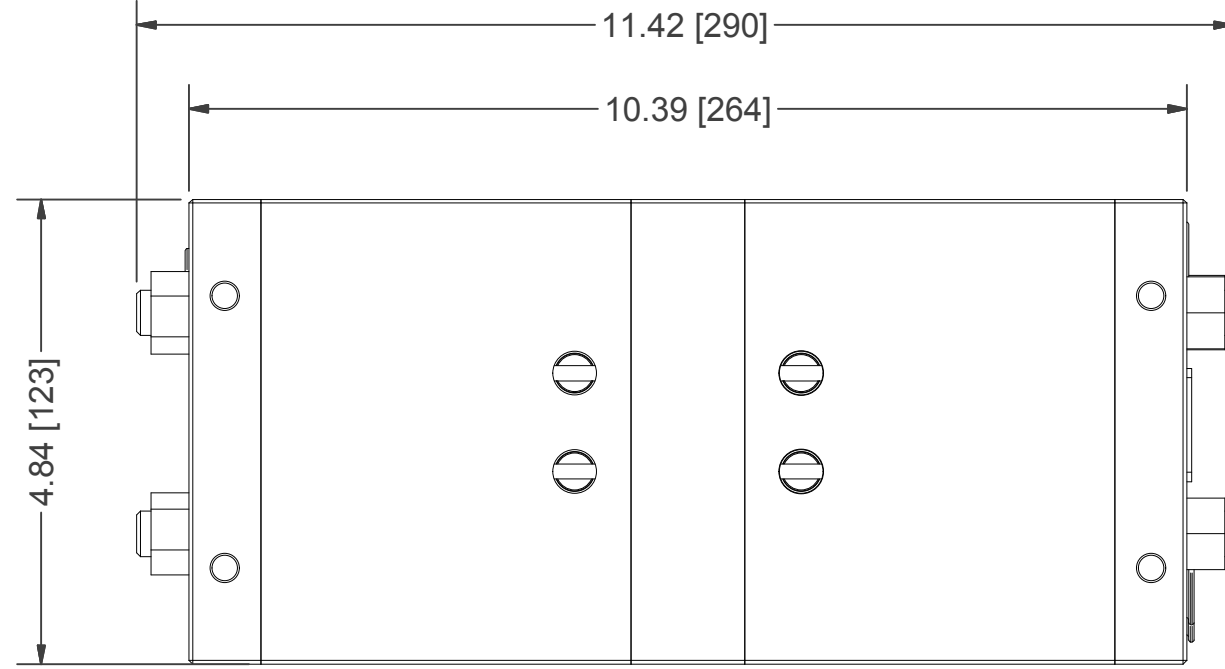


First Dismount the ETD from the system.

Step 1. Remove the four clamping bolts

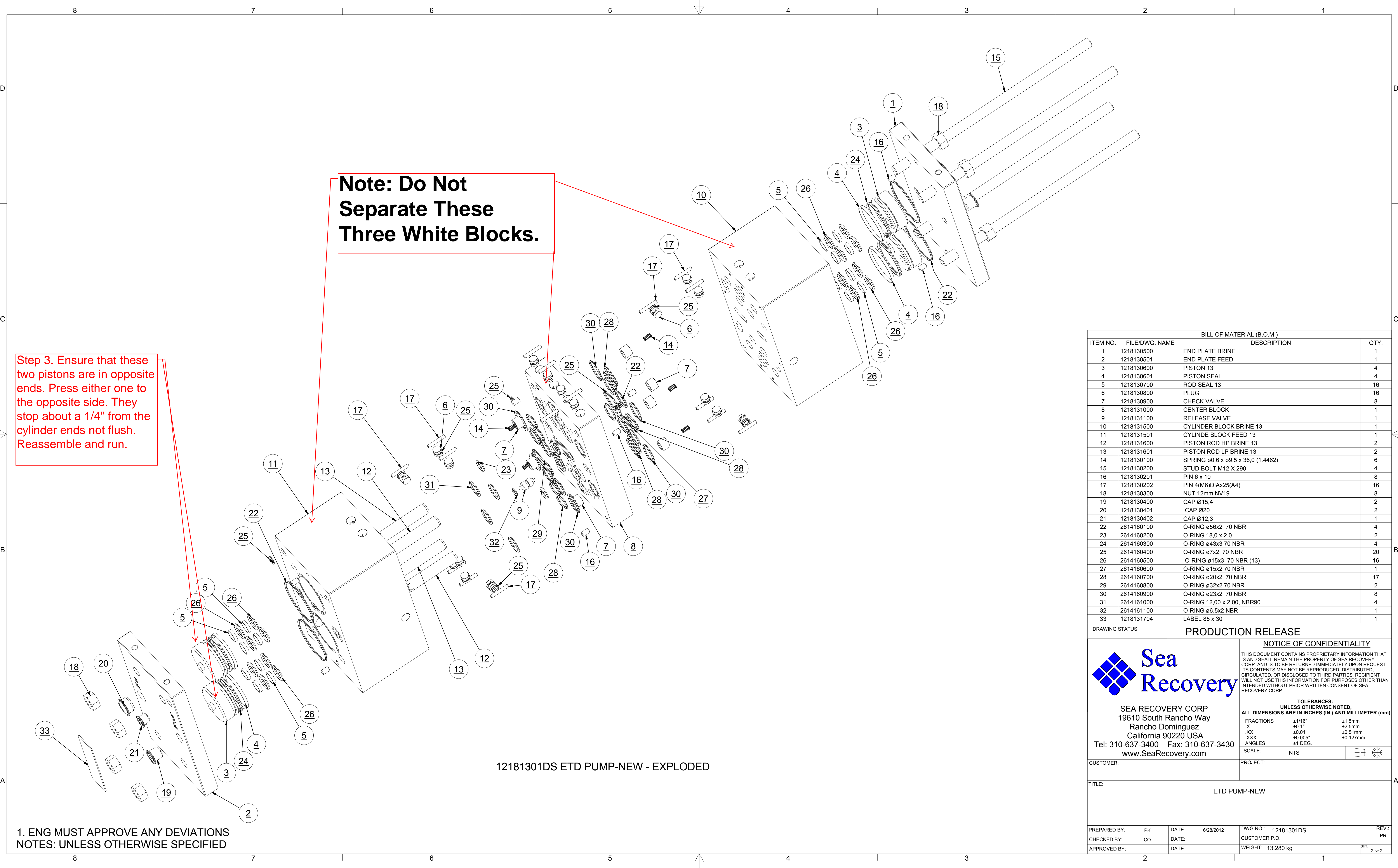
Step 2. Separate the two stainless steel end plates from the white blocks. Do not separate the three white blocks. See page 2

12181301DS ETD PUMP-NEW - ASSEMBLED



DRAWING STATUS: PRODUCTION RELEASE															
<p>SEA RECOVERY CORP 19610 South Rancho Way Rancho Dominguez California 90220 USA Tel: 310-637-3400 Fax: 310-637-3430 www.SeaRecovery.com</p>	<p>NOTICE OF CONFIDENTIALITY</p> <p>THIS DOCUMENT CONTAINS PROPRIETARY INFORMATION THAT IS AND SHALL REMAIN THE PROPERTY OF SEA RECOVERY CORP. AND IS TO BE RETURNED IMMEDIATELY UPON REQUEST. ITS CONTENTS MAY NOT BE REPRODUCED, DISTRIBUTED, CIRCULATED, OR DISCLOSED TO THIRD PARTIES. RECIPIENT WILL NOT USE THIS INFORMATION FOR PURPOSES OTHER THAN INTENDED WITHOUT PRIOR WRITTEN CONSENT OF SEA RECOVERY CORP</p>														
	<p>TOLERANCES: UNLESS OTHERWISE NOTED, ALL DIMENSIONS ARE IN INCHES (IN.) AND MILLIMETER (mm)</p> <table border="1"> <tr> <td>FRACTIONS</td> <td>±1/16"</td> <td>±1.5mm</td> </tr> <tr> <td>.X</td> <td>±0.1"</td> <td>±2.5mm</td> </tr> <tr> <td>.XX</td> <td>±0.01</td> <td>±0.51mm</td> </tr> <tr> <td>.XXX</td> <td>±0.005"</td> <td>±0.127mm</td> </tr> <tr> <td>ANGLES</td> <td>±1 DEG.</td> <td></td> </tr> </table>	FRACTIONS	±1/16"	±1.5mm	.X	±0.1"	±2.5mm	.XX	±0.01	±0.51mm	.XXX	±0.005"	±0.127mm	ANGLES	±1 DEG.
FRACTIONS	±1/16"	±1.5mm													
.X	±0.1"	±2.5mm													
.XX	±0.01	±0.51mm													
.XXX	±0.005"	±0.127mm													
ANGLES	±1 DEG.														
CUSTOMER:	PROJECT:														
TITLE: ETD PUMP-NEW															
PREPARED BY: PK	DATE: 6/28/2012	DWG NO.: 12181301DS	REV.: PR												
CHECKED BY: CO	DATE:	CUSTOMER P.O.:													
APPROVED BY:	DATE:	WEIGHT: 13.280 kg	SHT: 1 of 2												

1. ENG MUST APPROVE ANY DEVIATIONS
NOTES: UNLESS OTHERWISE SPECIFIED




Note: Do Not Separate These Three White Blocks.

Step 3. Ensure that these two pistons are in opposite ends. Press either one to the opposite side. They stop about a 1/4" from the cylinder ends not flush. Reassemble and run.

12181301DS ETD PUMP-NEW - EXPLODED

BILL OF MATERIAL (B.O.M.)			
ITEM NO.	FILE/DWG. NAME	DESCRIPTION	QTY.
1	1218130500	END PLATE BRINE	1
2	1218130501	END PLATE FEED	1
3	1218130600	PISTON 13	4
4	1218130601	PISTON SEAL	4
5	1218130700	ROD SEAL 13	16
6	1218130800	PLUG	16
7	1218130900	CHECK VALVE	8
8	1218131000	CENTER BLOCK	1
9	1218131100	RELEASE VALVE	1
10	1218131500	CYLINDER BLOCK BRINE 13	1
11	1218131501	CYLINDER BLOCK FEED 13	1
12	1218131600	PISTON ROD HP BRINE 13	2
13	1218131601	PISTON ROD LP BRINE 13	2
14	1218130100	SPRING ø0,6 x ø9,5 x 36,0 (1.4462)	6
15	1218130200	STUD BOLT M12 X 290	4
16	1218130201	PIN 6 x 10	8
17	1218130202	PIN 4(M6)DIAx25(A4)	16
18	1218130300	NUT 12mm NV19	8
19	1218130400	CAP Ø15,4	2
20	1218130401	CAP Ø20	2
21	1218130402	CAP Ø12,3	1
22	2614160100	O-RING ø56x2 70 NBR	4
23	2614160200	O-RING 18,0 x 2,0	2
24	2614160300	O-RING ø43x3 70 NBR	4
25	2614160400	O-RING ø7x2 70 NBR	20
26	2614160500	O-RING ø15x3 70 NBR (13)	16
27	2614160600	O-RING ø15x2 70 NBR	1
28	2614160700	O-RING ø20x2 70 NBR	17
29	2614160800	O-RING ø32x2 70 NBR	2
30	2614160900	O-RING ø23x2 70 NBR	8
31	2614161000	O-RING 12,00 x 2,00, NBR90	4
32	2614161100	O-RING ø6,5x2 NBR	1
33	1218131704	LABEL 85 x 30	1

DRAWING STATUS: PRODUCTION RELEASE



SEA RECOVERY CORP
 19610 South Rancho Way
 Rancho Dominguez
 California 90220 USA
 Tel: 310-637-3400 Fax: 310-637-3430
 www.SeaRecovery.com

NOTICE OF CONFIDENTIALITY

THIS DOCUMENT CONTAINS PROPRIETARY INFORMATION THAT IS AND SHALL REMAIN THE PROPERTY OF SEA RECOVERY CORP. AND IS TO BE RETURNED IMMEDIATELY UPON REQUEST. ITS CONTENTS MAY NOT BE REPRODUCED, DISTRIBUTED, CIRCULATED, OR DISCLOSED TO THIRD PARTIES. RECIPIENT WILL NOT USE THIS INFORMATION FOR PURPOSES OTHER THAN INTENDED WITHOUT PRIOR WRITTEN CONSENT OF SEA RECOVERY CORP.

TOLERANCES:
 UNLESS OTHERWISE NOTED,
 ALL DIMENSIONS ARE IN INCHES (IN.) AND MILLIMETER (MM)

FRACTIONS	±1/16"	±1.5mm
.X	±0.1"	±2.5mm
.XX	±0.01	±0.51mm
.XXX	±0.005"	±0.127mm
ANGLES	±1 DEG.	

SCALE: NTS

CUSTOMER: PROJECT:

TITLE: ETD PUMP-NEW

1. ENG MUST APPROVE ANY DEVIATIONS
 NOTES: UNLESS OTHERWISE SPECIFIED

PREPARED BY: PK	DATE: 6/28/2012	DWG NO.: 12181301DS	REV.: PR
CHECKED BY: CO	DATE:	CUSTOMER P.O.	
APPROVED BY:	DATE:	WEIGHT: 13.280 kg	SHT: 2 OF 2

G:\Development\Leisure Marine, Product Development\STANDARD UNITS\IRO Boost Parts and Assembly\12181301DS ETD PUMP-NEW - COMPLETE DESIGN.dwg